
HOUSE COMMITTEE AMENDMENTS

2022 First Extraordinary Session

Amendments proposed by House Committee on House and Governmental Affairs to
Original House Bill No. 14 by Representative Schexnayder

1 AMENDMENT NO. 1

2 On page 3, delete lines 18 and 19 and insert the following:

3 "(18) District 18 is composed of Pointe Coupee Parish; Precincts 1A, 4, 18,
4 19, 20, 21, and 22 of West Baton Rouge Parish; and West Feliciana Parish."

5 AMENDMENT NO. 2

6 On page 3, delete lines 23 through 27 and insert the following:

7
8 "(20) District 20 is composed of Caldwell Parish; Precincts 1-2, 1-3, 1-4, 2-2,
9 3-1, 3-2, 3-3, 3-4, 4-1, 4-2, 5-1, 6-1, 6-2, 6-3, 9-1, 9-2, 9-3, and 9-4 of Catahoula
10 Parish; Precincts 1, 2, 3, 4, 4A, 4B, 6, 12, 13, 13A, 14, 21, 22, 26, 27, 30, 31, 32, and
11 33 of Franklin Parish; Precincts 1-1, 1-2, 1-3, 4-2, 5-1, 6-1, 6-2, 7-1, 9-1, 9-2, 9-3,
12 9-4, and 10-1 of La Salle Parish; and Precincts 25, 26, and 58 of Ouachita Parish."

13 AMENDMENT NO. 3

14 On page 4, delete lines 3 through 5 and insert the following:

15 "(22) District 22 is composed of Grant Parish; Precincts 2-1, 3-1, 3-2, 4-3, 7-
16 2, 8-2, 8-3, 8-5, 8-6, 8-7, and 9-5 of La Salle Parish; and Precincts 1-3, 1-3A, 1-4, 1-
17 4A, 1-6, 1-7, 1-11, 1-12, 1-13, and 4-9 of Natchitoches Parish."

18 AMENDMENT NO. 4

19 On page 4, delete lines 10 through 15 and insert the following:

20 "(24) District 24 is composed of Precincts 2, 3, 4, 5, 6, 9, 19, 19C, 20, and
21 21 of Beauregard Parish; Precincts 1-1, 1-2, 1-3, 2-1, 2-2, 2-2A, 2-3, 2-4, 2-4A, 2-5,
22 2-6, 2-6A, 3-2, 3-6, 3-6A, 3-7, 3-7B, 3-7X, 4-1, 5-3, and 5-8 of Sabine Parish; and
23 Precincts 1-5, 1-5A, 1-7, 1-9, 2-1, 2-1A, 2-2, 2-2A, 2-3, 2-3A, 2-4, 2-4E, 3-1, 3-2,
24 3-3, 3-4, 3-5, 4-3E, 4-3L, 4-3N, 5-1, 5-1A, 5-2, 5-2A, 6-1, 6-2, 6-3, 6-4, 7-3, 7-4A,
25 8-1, 8-2, and 8-3 of Vernon Parish."

26 AMENDMENT NO. 5

27 On page 5, delete lines 1 through 9 and insert the following:

28 "(29) District 29 is composed of Precincts 1-17, 1-18, 1-19, 1-21, 1-22, 1-23,
29 1-24, 1-25, 1-26, 1-58, 1-77, 1-85, 2-16, 2-23, and 2-30 of East Baton Rouge Parish
30 and Precincts 1B, 1C, 2A, 2B, 3, 5, 6, 7A, 7B, 8, 9, 10A, 10B, 11A, 11B, 12, 13A,
31 13B, 14, 15, 16, and 17 of West Baton Rouge Parish.

32 (30) District 30 is composed of Precincts 7, 15, 16, 16A, 16B, 17, 17A, 18,
33 18A, 25, 25A, 25B, 26, 27, 27A, 27B, 27D, 28, and 30 of Beauregard Parish and
34 Precincts 1-1, 1-1B, 1-2, 1-2A, 1-3, 1-3B, 1-3C, 1-3D, 1-4, 1-4A, 1-4B, 1-4C, 1-4D,
35 1-6, 1-6A, 1-6B, 1-7A, 1-7B, 1-8, 1-8A, 1-8C, 1-8E, 1-8F, 4-1, 4-2, 4-3, 4-3A, 4-3C,
36 4-3F, 4-3G, 4-3J, 4-3K, 4-3M, 7-1, 7-2, 7-2A, 7-4, 7-5, 7-5A, and 7-5C of Vernon
37 Parish."

1 AMENDMENT NO. 6

2 On page 8, delete lines 12 through 15 and insert the following:

3 "(58) District 58 is composed of Precincts 23, 28, 30, 36, 37, 39, 42, 44, 45,
4 47, 48, 50, 51, 52, 53, 54, 55, 57, 65, and 73 of Ascension Parish; Precincts 1, 2, 3,
5 4, 5, 7, 10, 12, 13, 14, 15, 16, 17, 18, and 19 of St. James Parish; and Precincts 1-1,
6 1-3, 2-1, 2-2, and 2-3 of St. John the Baptist Parish."

7 AMENDMENT NO. 7

8 On page 8, delete lines 21 through 29 and insert the following:

9 "(61) District 61 is composed of Precincts 1-2, 1-7, 1-14, 1-27, 1-28, 1-29,
10 1-30, 1-31, 1-32, 1-33, 1-36, 1-37, 1-40, 1-50, 1-54, 1-57, 1-61, 1-62, 1-63, 1-64,
11 1-78, 1-93, and 1-104 of East Baton Rouge Parish.

12 (62) District 62 is composed of Precincts 1-11, 1-84, 2-3, 2-10, 2-11, 2-12,
13 2-14, 2-15, 2-17, 2-25, 2-26, 2-27, and 2-28 of East Baton Rouge Parish and East
14 Feliciana Parish.

15 (63) District 63 is composed of Precincts 1-86, 1-91, 1-92, 1-94, 1-95, 1-100,
16 1-101, 2-2, 2-4, 2-5, 2-9, 2-13, 2-18, 2-19, 2-20, 2-21, 2-22, 2-24, 2-29, 2-31, 2-32,
17 2-34, 2-35, 2-36, and 2-37 of East Baton Rouge Parish."

18 AMENDMENT NO. 8

19 On page 10, delete lines 23 through 26 and insert the following:

20 "(81) District 81 is composed of Precincts 14, 15, 27, 34, 35, 40, and 66 of
21 Ascension Parish; Precincts 7B, 7D, 14, 15, 16, 17, 18, 18A, 21, 21A, 22, 31, 32, 33,
22 34, and 43 of Livingston Parish and Precincts 6, 8, 9, and 11 of St. James Parish."

23 AMENDMENT NO. 9

24 On page 11, delete lines 18 and 19 and insert the following:

25 "(88) District 88 is composed of Precincts 3, 4, 5, 10, 12, 13, 18, 21, 22, 24,
26 25, 26, 31, 32, 33, 41, 43, 58, and 76 of Ascension Parish."

Differing Assignments

Plan: 221ES-57-A HCAHB14 Original (Schexnayder)

Page: 1 of 1

	221ES-57-A HCAHB14 Original (Schexnayder)	221ES-1 (Schexnayder) HB14 Original
Ascension		
14	81	88
15	81	88
27	81	88
31	88	58
32	88	58
43	88	81
Beauregard		
15	30	24
16	30	24
16B	30	24
17A	30	24
27A	30	24
East Baton Rouge		
1-26	29	61
2-11	62	63
La Salle		
2-1	22	20
7-1	20	22
St. James		
2	58	81
3	58	81
4	58	81
5	58	81
7	58	81
10	58	81
Vernon		
4-3L	24	30
4-3N	24	30
West Baton Rouge		
19	18	29
20	18	29

Plan Statistics

Plan: 221ES-57-A HCAHB14 Original (Schexnayder)

<u>Districts:</u>	<u># of Members</u>	<u>Actual Population</u>	<u>Ideal Population</u>	<u>Absolute Deviation</u>	<u>Relative Deviation</u>
District 1	1	45,851	44,359	1,492	3.363%
District 2	1	45,642	44,359	1,283	2.892%
District 3	1	46,122	44,359	1,763	3.974%
District 4	1	46,405	44,359	2,046	4.612%
District 5	1	45,375	44,359	1,016	2.290%
District 6	1	44,174	44,359	-185	-0.417%
District 7	1	42,369	44,359	-1,990	-4.486%
District 8	1	45,325	44,359	966	2.178%
District 9	1	43,401	44,359	-958	-2.160%
District 10	1	44,137	44,359	-222	-0.500%
District 11	1	42,458	44,359	-1,901	-4.285%
District 12	1	45,889	44,359	1,530	3.449%
District 13	1	44,187	44,359	-172	-0.388%
District 14	1	44,279	44,359	-80	-0.180%
District 15	1	43,934	44,359	-425	-0.958%
District 16	1	42,328	44,359	-2,031	-4.579%
District 17	1	42,807	44,359	-1,552	-3.499%
District 18	1	44,967	44,359	608	1.371%
District 19	1	42,717	44,359	-1,642	-3.702%
District 20	1	42,204	44,359	-2,155	-4.858%
District 21	1	44,795	44,359	436	0.983%
District 22	1	43,238	44,359	-1,121	-2.527%
District 23	1	42,708	44,359	-1,651	-3.722%
District 24	1	42,460	44,359	-1,899	-4.281%
District 25	1	43,136	44,359	-1,223	-2.757%
District 26	1	44,636	44,359	277	0.624%
District 27	1	44,225	44,359	-134	-0.302%
District 28	1	42,851	44,359	-1,508	-3.400%
District 29	1	42,765	44,359	-1,594	-3.593%
District 30	1	42,952	44,359	-1,407	-3.172%
District 31	1	46,510	44,359	2,151	4.849%
District 32	1	42,415	44,359	-1,944	-4.382%
District 33	1	44,243	44,359	-116	-0.262%
District 34	1	45,879	44,359	1,520	3.427%
District 35	1	46,088	44,359	1,729	3.898%
District 36	1	45,062	44,359	703	1.585%
District 37	1	45,146	44,359	787	1.774%
District 38	1	42,309	44,359	-2,050	-4.621%
District 39	1	45,041	44,359	682	1.537%
District 40	1	45,296	44,359	937	2.112%
District 41	1	44,744	44,359	385	0.868%
District 42	1	45,662	44,359	1,303	2.937%
District 43	1	42,630	44,359	-1,729	-3.898%
District 44	1	42,580	44,359	-1,779	-4.010%
District 45	1	43,866	44,359	-493	-1.111%
District 46	1	43,596	44,359	-763	-1.720%
District 47	1	45,467	44,359	1,108	2.498%
District 48	1	44,701	44,359	342	0.771%
District 49	1	45,351	44,359	992	2.236%
District 50	1	43,190	44,359	-1,169	-2.635%
District 51	1	46,319	44,359	1,960	4.418%
District 52	1	43,163	44,359	-1,196	-2.696%
District 53	1	43,160	44,359	-1,199	-2.703%
District 54	1	42,849	44,359	-1,510	-3.404%
District 55	1	45,124	44,359	765	1.725%
District 56	1	46,361	44,359	2,002	4.513%
District 57	1	42,697	44,359	-1,662	-3.747%

Plan Statistics

Plan: 221ES-57-A HCAHB14 Original (Schexnayder)

<u>Districts:</u>	<u># of Members</u>	<u>Actual Population</u>	<u>Ideal Population</u>	<u>Absolute Deviation</u>	<u>Relative Deviation</u>
District 58	1	45,194	44,359	835	1.882%
District 59	1	45,699	44,359	1,340	3.021%
District 60	1	46,391	44,359	2,032	4.581%
District 61	1	44,049	44,359	-310	-0.699%
District 62	1	44,748	44,359	389	0.877%
District 63	1	44,638	44,359	279	0.629%
District 64	1	45,619	44,359	1,260	2.840%
District 65	1	44,189	44,359	-170	-0.383%
District 66	1	43,703	44,359	-656	-1.479%
District 67	1	43,566	44,359	-793	-1.788%
District 68	1	44,607	44,359	248	0.559%
District 69	1	46,550	44,359	2,191	4.939%
District 70	1	45,398	44,359	1,039	2.342%
District 71	1	43,001	44,359	-1,358	-3.061%
District 72	1	42,817	44,359	-1,542	-3.476%
District 73	1	46,503	44,359	2,144	4.833%
District 74	1	44,185	44,359	-174	-0.392%
District 75	1	45,463	44,359	1,104	2.489%
District 76	1	43,228	44,359	-1,131	-2.550%
District 77	1	43,291	44,359	-1,068	-2.408%
District 78	1	44,584	44,359	225	0.507%
District 79	1	45,579	44,359	1,220	2.750%
District 80	1	46,430	44,359	2,071	4.669%
District 81	1	43,632	44,359	-727	-1.639%
District 82	1	46,021	44,359	1,662	3.747%
District 83	1	43,956	44,359	-403	-0.908%
District 84	1	42,520	44,359	-1,839	-4.146%
District 85	1	44,303	44,359	-56	-0.126%
District 86	1	45,736	44,359	1,377	3.104%
District 87	1	45,538	44,359	1,179	2.658%
District 88	1	42,542	44,359	-1,817	-4.096%
District 89	1	45,218	44,359	859	1.936%
District 90	1	43,451	44,359	-908	-2.047%
District 91	1	42,508	44,359	-1,851	-4.173%
District 92	1	45,176	44,359	817	1.842%
District 93	1	44,224	44,359	-135	-0.304%
District 94	1	45,685	44,359	1,326	2.989%
District 95	1	43,337	44,359	-1,022	-2.304%
District 96	1	44,329	44,359	-30	-0.068%
District 97	1	45,713	44,359	1,354	3.052%
District 98	1	43,431	44,359	-928	-2.092%
District 99	1	45,922	44,359	1,563	3.524%
District 100	1	44,360	44,359	1	0.002%
District 101	1	45,346	44,359	987	2.225%
District 102	1	45,264	44,359	905	2.040%
District 103	1	43,764	44,359	-595	-1.341%
District 104	1	45,197	44,359	838	1.889%
District 105	1	43,366	44,359	-993	-2.239%

Plan Statistics

Plan: 221ES-57-A HCAHB14 Original (Schexnayder)

<u>Districts:</u>	<u># of Members</u>	<u>Actual Population</u>	<u>Ideal Population</u>	<u>Absolute Deviation</u>	<u>Relative Deviation</u>
Grand Total:	105	4,657,757	4,657,695		
Ideal Population Per Member:		44359			
Number of Districts for Plan Type:		105			
Range of District Populations:		42,204	to 46,550		
Absolute Mean Deviation:		41			
Absolute Range:		-2,155	to 2,191		
Absolute Overall Range:		4,346			
Relative Mean Deviation:		2.49%			
Relative Range:		-4.86%	to 4.94%		
Relative Overall Range:		9.80%			

<i>Ideal - Actual:</i>	-62
<i>Remainder:</i>	62
<i>Unassigned Population:</i>	0

District Population

Plan: 221ES-57-A HCAHB14 Original (Schexnayder)

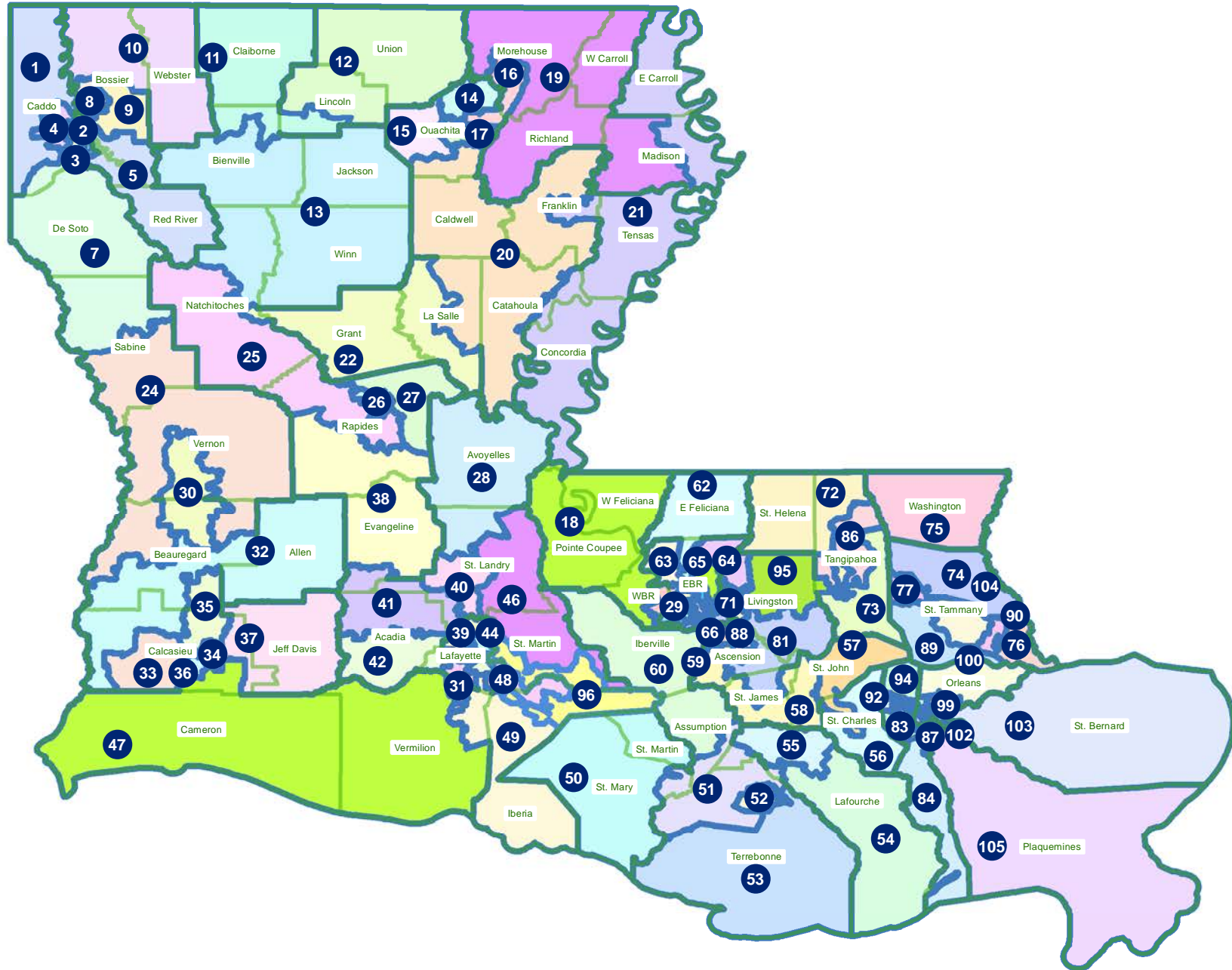
	Total Population	Total White	Total Black	Total Asian	Total Other	Total Hispanic	VAP Total	VAP White	VAP Black	VAP Hispanic Total	Reg Total Dec 2021	Reg White Dec 2021	Reg Black Dec 2021	Reg Other Dec 2021	Reg Dem Total Dec 2021	Reg Rep Total Dec 2021	Reg Other Total Dec 2021
District 18																	
Pointe Coupee	20,758	12,395	7,504	107	593	625	16,250	10,108	5,502	429	14,675	9,320	5,121	234	7,546	3,996	3,133
West Baton Rouge	8,899	5,638	2,722	49	347	407	6,680	4,318	1,983	291	5,455	3,799	1,567	89	2,301	1,774	1,380
West Feliciana	15,310	10,883	3,740	89	373	651	12,783	9,283	2,951	572	7,407	5,092	2,180	135	2,874	2,871	1,662
District 18	44,967	28,916	13,966	245	1,313	1,683	35,713	23,709	10,436	1,292	27,537	18,211	8,868	458	12,721	8,641	6,175
	100.000%	64.305%	31.058%	0.545%	2.920%	3.743%	100.000%	66.388%	29.222%	3.618%	77.106%	66.133%	32.204%	1.663%	46.196%	31.380%	22.424%
District 20																	
Caldwell	9,645	7,646	1,632	51	166	221	7,478	5,969	1,224	163	6,031	5,124	818	89	1,805	2,800	1,426
Catahoula	6,353	4,962	739	37	526	562	5,006	3,880	521	528	4,454	3,954	460	40	1,440	2,071	943
Franklin	14,096	10,783	2,944	47	153	191	10,749	8,488	1,994	121	9,753	7,946	1,725	82	3,022	4,725	2,006
La Salle	8,638	7,127	1,124	36	129	140	6,549	5,459	799	96	5,755	5,067	587	101	1,462	3,088	1,205
Ouachita	3,472	2,473	717	10	125	116	2,657	1,954	498	76	2,283	1,765	450	68	672	991	620
District 20	42,204	32,991	7,156	181	1,099	1,230	32,439	25,750	5,036	984	28,276	23,856	4,040	380	8,401	13,675	6,200
	100.000%	78.170%	16.956%	0.429%	2.604%	2.914%	100.000%	79.380%	15.525%	3.033%	87.167%	84.368%	14.288%	1.344%	29.711%	48.363%	21.927%
District 22																	
Grant	22,169	17,709	3,335	133	348	1,333	17,527	13,964	2,717	1,179	12,688	11,174	1,176	338	3,190	6,019	3,479
La Salle	6,153	4,221	298	247	1,237	1,262	5,014	3,177	266	1,229	3,037	2,911	50	76	651	1,672	714
Natchitoches	14,916	6,411	7,547	143	596	841	11,918	5,621	5,513	701	8,088	3,727	3,942	419	4,027	2,022	2,039
District 22	43,238	28,341	11,180	523	2,181	3,436	34,459	22,762	8,496	3,109	23,813	17,812	5,168	833	7,868	9,713	6,232
	100.000%	65.547%	25.857%	1.210%	5.044%	7.947%	100.000%	66.055%	24.655%	9.022%	69.105%	74.799%	21.702%	3.498%	33.041%	40.789%	26.171%
District 24																	
Beauregard	7,448	6,660	342	55	120	166	5,554	4,985	220	90	5,041	4,642	189	210	1,093	2,313	1,635
Sabine	11,347	8,229	2,375	55	199	259	8,859	6,635	1,696	180	7,286	5,637	1,317	332	2,091	3,473	1,722
Vernon	23,665	19,236	1,897	481	1,243	1,737	17,830	14,794	1,233	1,115	12,554	11,412	418	724	2,768	6,312	3,474
District 24	42,460	34,125	4,614	591	1,562	2,162	32,243	26,414	3,149	1,385	24,881	21,691	1,924	1,266	5,952	12,098	6,831
	100.000%	80.370%	10.867%	1.392%	3.679%	5.092%	100.000%	81.922%	9.766%	4.296%	77.167%	87.179%	7.733%	5.088%	23.922%	48.623%	27.455%
District 29																	
East Baton Rouge	24,465	726	23,439	52	193	323	17,818	638	16,961	227	16,113	480	15,219	414	12,226	376	3,511
West Baton Rouge	18,300	8,669	8,448	238	762	837	13,846	6,828	6,166	580	11,686	6,138	5,298	250	5,890	3,071	2,725
District 29	42,765	9,395	31,887	290	955	1,160	31,664	7,466	23,127	807	27,799	6,618	20,517	664	18,116	3,447	6,236
	100.000%	21.969%	74.563%	0.678%	2.233%	2.712%	100.000%	23.579%	73.039%	2.549%	87.794%	23.807%	73.805%	2.389%	65.168%	12.400%	22.432%
District 30																	
Beauregard	17,867	12,790	3,670	299	602	825	13,588	9,888	2,710	544	10,430	7,583	2,106	741	2,980	4,394	3,056
Vernon	25,085	15,851	5,714	961	1,767	2,438	18,431	11,971	3,900	1,625	11,506	7,770	2,593	1,143	3,535	4,167	3,804
District 30	42,952	28,641	9,384	1,260	2,369	3,263	32,019	21,859	6,610	2,169	21,936	15,353	4,699	1,884	6,515	8,561	6,860
	100.000%	66.681%	21.848%	2.934%	5.515%	7.597%	100.000%	68.269%	20.644%	6.774%	68.509%	69.990%	21.421%	8.589%	29.700%	39.027%	31.273%
District 58																	

District Population

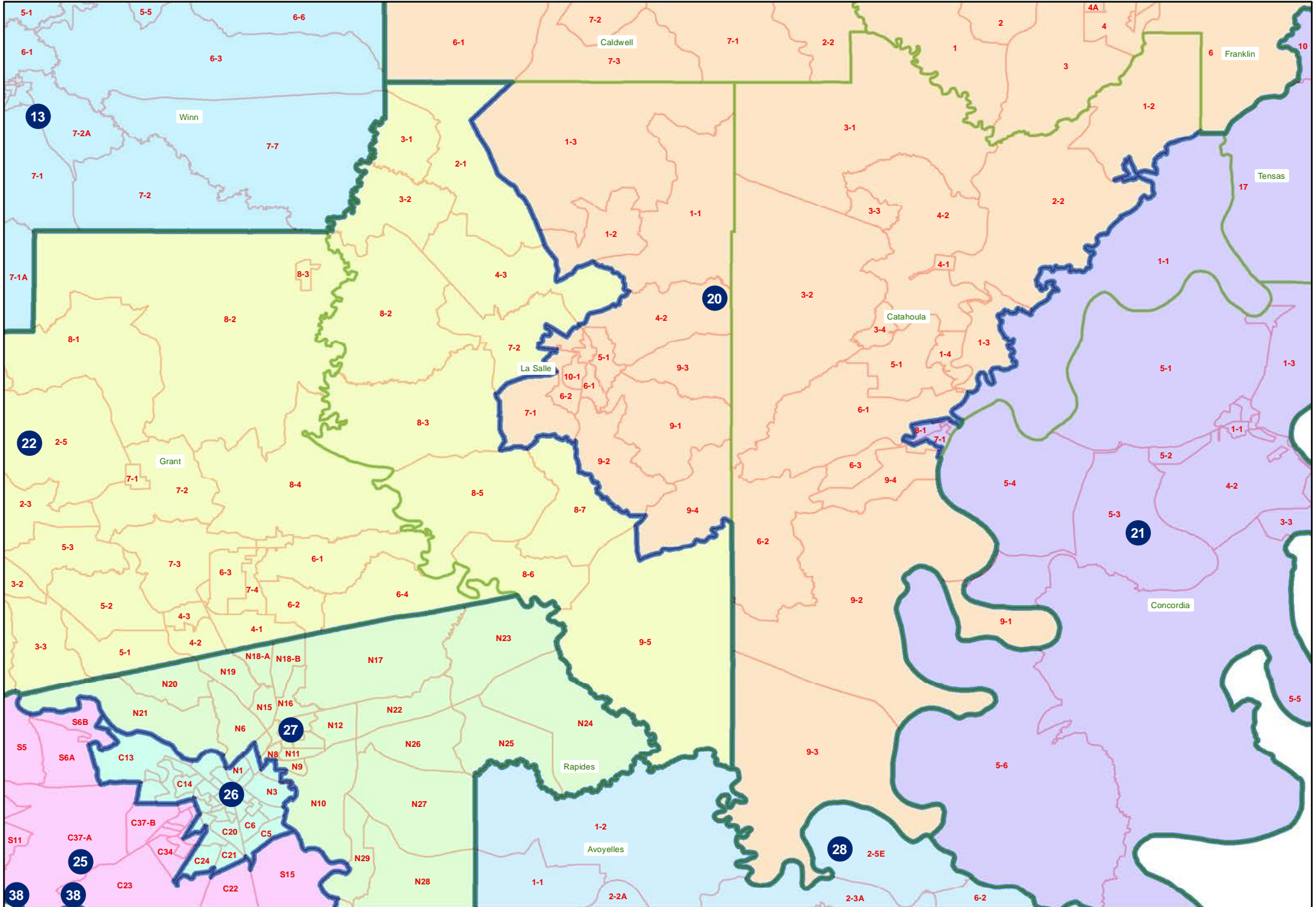
Plan: 221ES-57-A HCAHB14 Original (Schexnayder)

	Total Population	Total White	Total Black	Total Asian	Total Other	Total Hispanic	VAP Total	VAP White	VAP Black	VAP Hispanic Total	Reg Total Dec 2021	Reg White Dec 2021	Reg Black Dec 2021	Reg Other Dec 2021	Reg Dem Total Dec 2021	Reg Rep Total Dec 2021	Reg Other Total Dec 2021
District 58																	
Ascension	24,351	7,423	15,050	166	1,472	1,834	18,030	6,146	10,584	1,235	15,187	5,186	9,384	617	9,275	2,529	3,383
St. James	14,875	5,971	8,564	48	230	259	11,545	4,898	6,411	172	11,324	4,419	6,741	164	7,811	1,772	1,741
St. John the Baptist	5,968	2,409	3,268	14	219	258	4,731	2,034	2,478	177	4,509	1,700	2,730	79	3,060	647	802
District 58	45,194	15,803	26,882	228	1,921	2,351	34,306	13,078	19,473	1,584	31,020	11,305	18,855	860	20,146	4,948	5,926
	100.000%	34.967%	59.481%	0.504%	4.251%	5.202%	100.000%	38.122%	56.763%	4.617%	90.422%	36.444%	60.783%	2.772%	64.945%	15.951%	19.104%
District 61																	
East Baton Rouge	44,049	7,200	34,310	483	1,762	2,115	33,624	6,437	25,314	1,531	25,934	5,222	19,658	1,054	17,675	2,098	6,161
District 61	44,049	7,200	34,310	483	1,762	2,115	33,624	6,437	25,314	1,531	25,934	5,222	19,658	1,054	17,675	2,098	6,161
	100.000%	16.345%	77.891%	1.097%	4.000%	4.801%	100.000%	19.144%	75.286%	4.553%	77.129%	20.136%	75.800%	4.064%	68.154%	8.090%	23.756%
District 62																	
East Baton Rouge	25,209	5,324	18,958	140	600	687	18,954	4,457	13,856	440	16,926	3,930	12,459	537	11,216	2,119	3,591
East Feliciana	19,539	11,516	7,341	91	329	391	16,183	9,740	5,918	317	13,600	7,959	5,186	455	6,060	4,533	3,007
District 62	44,748	16,840	26,299	231	929	1,078	35,137	14,197	19,774	757	30,526	11,889	17,645	992	17,276	6,652	6,598
	100.000%	37.633%	58.771%	0.516%	2.076%	2.409%	100.000%	40.405%	56.277%	2.154%	86.877%	38.947%	57.803%	3.250%	56.594%	21.791%	21.614%
District 63																	
East Baton Rouge	44,638	11,599	31,302	401	1,051	1,174	33,586	8,905	23,394	875	29,349	8,079	20,390	880	18,059	4,901	6,389
District 63	44,638	11,599	31,302	401	1,051	1,174	33,586	8,905	23,394	875	29,349	8,079	20,390	880	18,059	4,901	6,389
	100.000%	25.985%	70.124%	0.898%	2.354%	2.630%	100.000%	26.514%	69.654%	2.605%	87.385%	27.527%	69.474%	2.998%	61.532%	16.699%	21.769%
District 81																	
Ascension	13,908	10,903	1,951	138	699	816	10,386	8,357	1,347	502	9,733	8,203	1,162	368	2,677	4,363	2,693
Livingston	24,407	19,753	2,604	343	1,179	1,289	18,081	15,104	1,608	788	14,172	12,496	1,129	547	3,416	6,530	4,226
St. James	5,317	4,002	1,198	12	85	84	3,960	2,985	886	65	3,642	2,835	760	47	1,624	1,311	707
District 81	43,632	34,658	5,753	493	1,963	2,189	32,427	26,446	3,841	1,355	27,547	23,534	3,051	962	7,717	12,204	7,626
	100.000%	79.433%	13.185%	1.130%	4.499%	5.017%	100.000%	81.555%	11.845%	4.179%	84.951%	85.432%	11.076%	3.492%	28.014%	44.302%	27.684%
District 88																	
Ascension	42,542	31,652	6,336	550	3,199	3,798	31,076	23,919	4,149	2,416	26,633	22,166	3,118	1,349	7,378	11,323	7,932
District 88	42,542	31,652	6,336	550	3,199	3,798	31,076	23,919	4,149	2,416	26,633	22,166	3,118	1,349	7,378	11,323	7,932
	100.000%	74.402%	14.894%	1.293%	7.520%	8.928%	100.000%	76.969%	13.351%	7.774%	85.703%	83.228%	11.707%	5.065%	27.702%	42.515%	29.783%
Grand Total	523,389	280,161	209,069	5,476	20,304	25,639	398,693	220,942	152,799	18,264	325,251	185,736	127,933	11,582	147,824	98,261	79,166
	100.000%	53.528%	39.945%	1.046%	3.879%	4.899%	100.000%	55.417%	38.325%	4.581%	81.579%	57.105%	39.334%	3.561%	45.449%	30.211%	24.340%

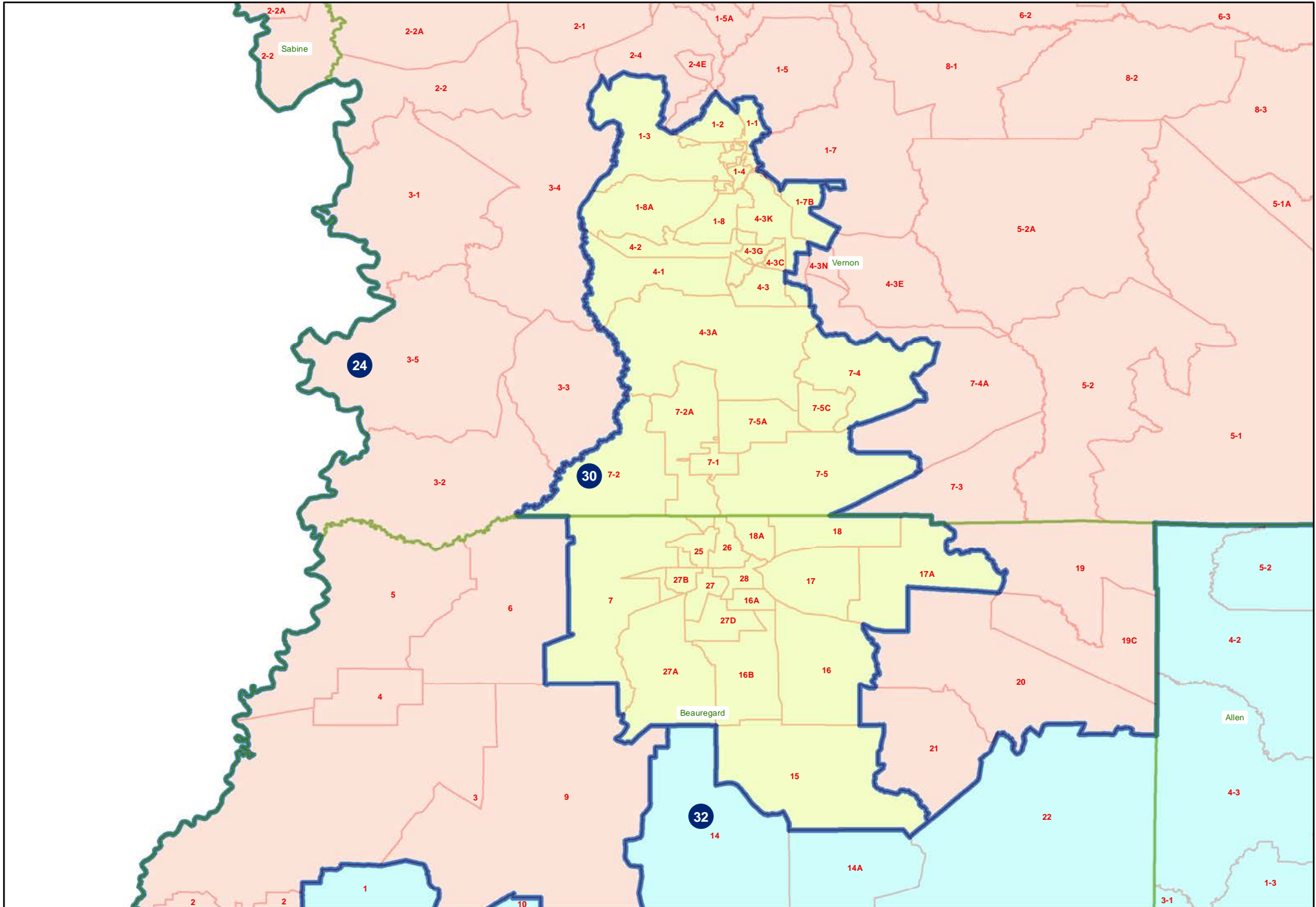
221ES-57-A HCAHB14 Original (Schexnayder)
Statewide



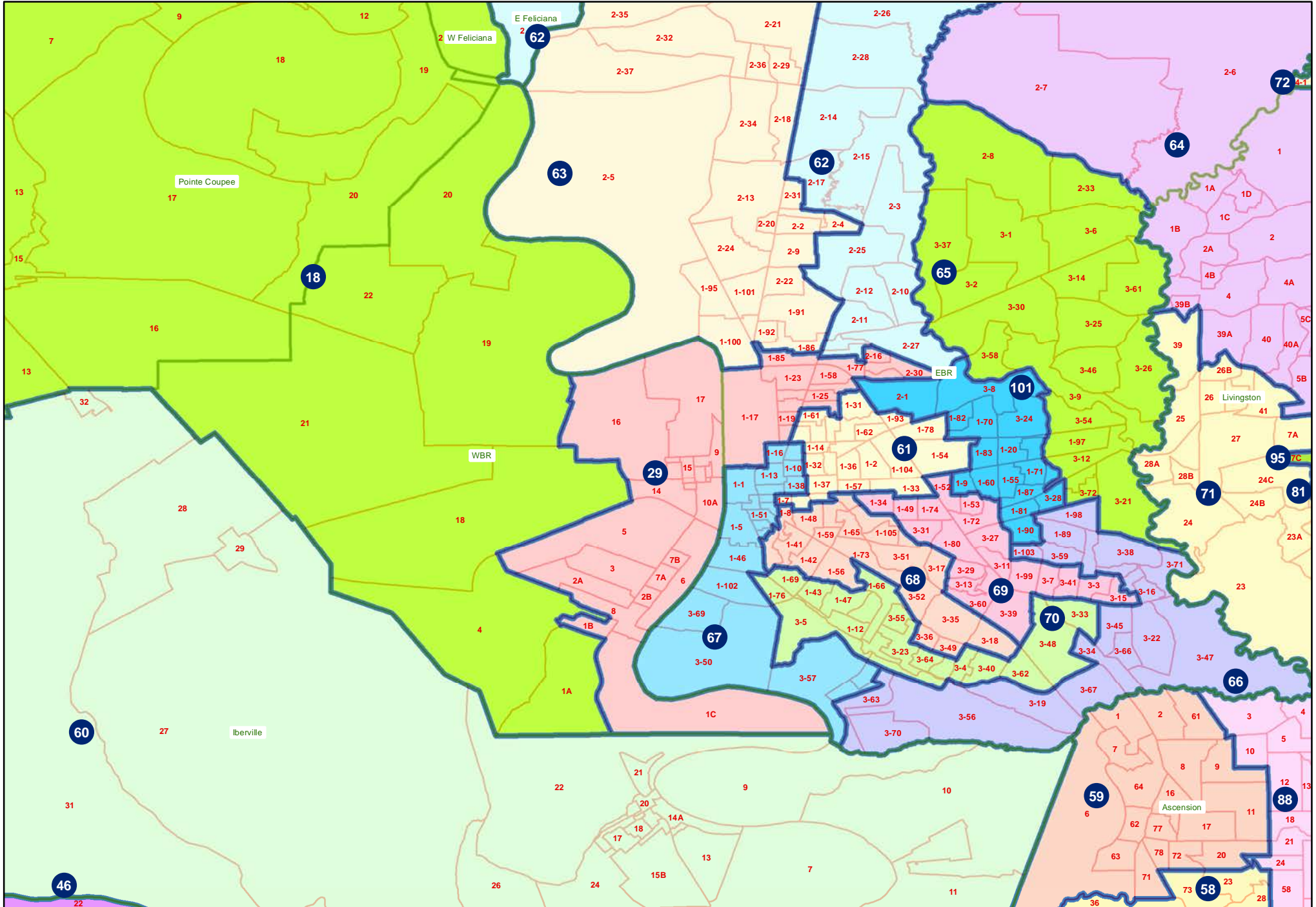
221ES-57-A HCAHB14 Original (Schexnayder)
LaSalle



221ES-57-A HCAHB14 Original (Schexnayder)
Vernon and Beauregard



221ES-57-A HCAHB14 Original (Schexnayder)
EBR and WBR



221ES-57-A HCAHB14 Original (Schexnayder)
Ascension and St. James

