

First Extraordinary Session, 2011

SENATE BILL NO. 24

BY SENATOR RISER

CONGRESS. Provides for the redistricting of Louisiana's Congressional Districts.

1  
2  
3  
4  
5  
6  
7  
8  
9  
10  
11  
12  
13  
14  
15  
16  
17

AN ACT

To enact R.S. 18:1276.1 and to repeal R.S. 18:1276, relative to congressional districts; to provide for the redistricting of Louisiana's seven congressional districts into six congressional districts; to provide relative to the terms of members of congress serving on the effective date of the Act; to provide for the filling of vacancies; to provide relative to positions and offices, other than congressional, that are based upon congressional districts; to provide for the effectiveness of the Act; and to provide for related matters.

Be it enacted by the Legislature of Louisiana:

Section 1. R.S. 18:1276.1 is hereby enacted to read as follows:

**§1276.1. Congressional districts**

**A. Louisiana is divided into six congressional districts, and the qualified electors of each district shall elect one representative to the United States House of Representatives.**

**(1) District 1 is composed of Precincts 1, 2, 3, 4, 5, 7, 8, 9, 10, 11, 12, 13, 14, 15, 16, 17, 18, 19, 20, 21, 22, 23, 24, 25, 26, 27, 28, 29, 30, 31, 32, 33, 34, 35, 36, 37, 38, 39, 40, 41, 42, 43, 44, 45, 46, 51, 52, 53, 54, 55, 56, 58, 59, 60, 61, 62, 63, 64,**

1 65, 66, 67, 68, 69, 70, 71, 72, 73, 74, 75, 76, 77, 78, 79, 80, 81, 82, 83, 84, 85, 86, 87,  
2 88, 89, 90, 91, 92, 93, 94, 95, 96, 97, 98, 99, 100, 101, 102, 103, 105, 106, 117, 118,  
3 119, 120, 121, 122, 123, 124, 125, 126, 127, 128, 129, 130, 132, 134, 136, 192, 198,  
4 199, 246, 247, 248, 1-GI, 1-H, 2-H, 3-H, 4-H, 5-H, 6-H, 7-H, 8-H, 9-H, 1-K, 2-K,  
5 3-K, 4-K, 5-K, 6-K, 7-K, 8-K, 9-K, 10-K, 11-K, 12-K, 13-KA, 14-K, 16-K, 17-K,  
6 18-K, 19-K, 20-K, 25-K, 27-K, 28-K, 34-K, 35-K and 1-L of Jefferson Parish;  
7 Lafourche Parish; Precincts 4-9, 4-11, 4-14, 4-15, 4-17, 4-17A, 4-18, 4-20, 4-21,  
8 4-22, 4-23, 5-13, 5-15, 5-16, 5-17, 5-18, 7-41, 7-42, 14-1, 14-2, 14-3, 14-4, 14-5,  
9 14-6, 14-7, 14-8, 14-9, 14-10, 14-11, 14-14, 14-15, 14-16, 14-17, 14-20, 16-1,  
10 16-1A, 16-2, 16-3, 16-4, 17-1, 17-17, 17-18, 17-18A, 17-19 and 17-20 of Orleans  
11 Parish; Plaquemines Parish; St. Bernard Parish; St. Tammany Parish and  
12 Precincts 15, 17, 18, 26, 27, 27A, 28, 28A, 33, 40, 40A, 41, 42, 42A, 43, 44, 45,  
13 45A, 46, 47, 48, 49, 70, 70A, 71, 72, 72A, 73, 74, 111, 111A, 115B, 117, 119, 120,  
14 120A, 120B, 121, 121A, 121B, 122, 122A, 123, 124, 125, 127, 127A, 129, 129A,  
15 133, 133A, 137, 137A, 137B, 137C, 137D, 139, 141, 141A, 143, 145, 149, 149A  
16 and 151 of Tangipahoa Parish.

17 (2) District 2 is composed of Precincts 28, 36, 37, 39, 42, 44, 45, 47, 48,  
18 49, 50, 51, 52, 53, 54, 55, 56 and 57 of Ascension Parish; Precincts 1-1, 1-2, 2-1,  
19 2-2, 5-1, 5-2 and 6-2 of Assumption Parish; Precincts 1-2, 1-3, 1-4, 1-5, 1-6, 1-10,  
20 1-13, 1-14, 1-15, 1-16, 1-17, 1-18, 1-19, 1-21, 1-22, 1-23, 1-24, 1-25, 1-26, 1-27,  
21 1-28, 1-29, 1-30, 1-31, 1-32, 1-36, 1-37, 1-38, 1-45, 1-50, 1-51, 1-58, 1-61, 1-62,  
22 1-63, 1-67, 1-68, 1-77, 1-84, 1-85, 1-86, 1-91, 1-92, 1-93, 1-94, 1-95, 1-100, 1-101,  
23 1-104, 2-1, 2-2, 2-9, 2-11, 2-16, 2-20, 2-22, 2-23, 2-24, 2-27 and 2-30 of East Baton  
24 Rouge Parish; Precincts 1, 2, 3, 6, 7, 8, 10, 11, 12, 13A, 13B, 13C, 14A, 15, 16, 19,  
25 19A, 20, 21, 22 and 23 of Iberville Parish; Precincts 57, 104, 107, 108, 115, 116,  
26 131, 133, 138, 150, 151, 152, 153, 154, 155, 156, 157A, 157B, 170, 171, 172, 173,  
27 174, 175, 176, 177, 178, 179A, 179B, 180, 181, 182, 183, 184, 185A, 185B, 187,  
28 188, 189, 190, 191, 193, 194A, 194B, 195, 196, 197A, 197B, 197C, 200, 201, 202,  
29 203, 204, 205, 210, 211, 212A, 212B, 213A, 213B, 213C, 214A, 214B, 215, 216A,

1            216B, 217, 225, 226, 227, 228, 229, 230, 231, 232A, 232B, 234, 235, 236, 237, 238,  
2            1-G, 2-G, 3-G, 4-G, 5-G, 6-G, 7-G, 8-G, 9-G, 10-G, 11-G, 12-G, 13-G, 13-KB,  
3            15-K, 21-K, 22-K, 23-K, 24-K, 26-K, 29-K, 30-K, 31-K, 33-K, 1-W, 2-W, 3-W,  
4            4-W, 5-W, 6-W and 7-W of Jefferson Parish; Precincts 1-1, 1-2, 1-5, 1-6, 2-1,  
5            2-2, 2-3, 2-4, 2-6, 2-6A, 2-7, 3-1, 3-3, 3-5, 3-8, 3-9, 3-12, 3-14, 3-15, 3-18, 3-19,  
6            3-20, 4-2, 4-3, 4-4, 4-5, 4-6, 4-7, 4-8, 5-1, 5-2, 5-3, 5-4, 5-5, 5-7, 5-8, 5-9, 5-10, 5-11,  
7            5-12, 6-1, 6-2, 6-4, 6-6, 6-7, 6-8, 6-9, 7-1, 7-2, 7-4, 7-5, 7-6, 7-7, 7-8, 7-9A, 7-10,  
8            7-11, 7-12, 7-13, 7-14, 7-15, 7-16, 7-17, 7-18, 7-19, 7-20, 7-21, 7-23, 7-24, 7-25,  
9            7-25A, 7-26, 7-27, 7-27B, 7-28, 7-28A, 7-29, 7-30, 7-32, 7-33, 7-34, 7-35, 7-37,  
10           7-37A, 7-40, 8-1, 8-2, 8-4, 8-6, 8-7, 8-8, 8-9, 8-12, 8-13, 8-14, 8-15, 8-19, 8-20,  
11           8-21, 8-22, 8-23, 8-24, 8-25, 8-26, 8-27, 8-28, 8-30, 9-1, 9-3, 9-3A, 9-4, 9-5, 9-5A,  
12           9-6B, 9-6C, 9-6D, 9-6E, 9-6F, 9-7, 9-8, 9-8A, 9-9, 9-10, 9-11, 9-12, 9-13, 9-14,  
13           9-15, 9-16, 9-17, 9-19, 9-21, 9-23, 9-25, 9-26, 9-28, 9-28C, 9-28E, 9-29, 9-30,  
14           9-30A, 9-31, 9-31A, 9-31B, 9-31D, 9-32, 9-33, 9-34A, 9-35, 9-35A, 9-36, 9-36B,  
15           9-37, 9-38, 9-38A, 9-39, 9-39B, 9-40, 9-40A, 9-40C, 9-41, 9-41A, 9-41B, 9-41C,  
16           9-41D, 9-42, 9-42C, 9-43A, 9-43B, 9-43C, 9-43E, 9-43F, 9-43G, 9-43H, 9-43I,  
17           9-43J, 9-43K, 9-43L, 9-43M, 9-43N, 9-44, 9-44A, 9-44B, 9-44D, 9-44E, 9-44F,  
18           9-44G, 9-44I, 9-44J, 9-44L, 9-44M, 9-44N, 9-44O, 9-44P, 9-44Q, 9-45, 9-45A,  
19           10-3, 10-6, 10-7, 10-8, 10-9, 10-11, 10-12, 10-13, 10-14, 11-2, 11-3, 11-4, 11-5,  
20           11-8, 11-9, 11-10, 11-11, 11-12, 11-13, 11-14, 11-17, 12-1, 12-2, 12-3, 12-4, 12-5,  
21           12-6, 12-7, 12-8, 12-9, 12-10, 12-11, 12-12, 12-13, 12-14, 12-16, 12-17, 12-19, 13-1,  
22           13-2, 13-3, 13-4, 13-5, 13-6, 13-7, 13-8, 13-9, 13-10, 13-11, 13-12, 13-13, 13-14,  
23           13-15, 13-16, 14-12, 14-13A, 14-18A, 14-19, 14-21, 14-23, 14-24A, 14-25, 14-26,  
24           15-1, 15-2, 15-3, 15-5, 15-6, 15-8, 15-9, 15-10, 15-11, 15-12, 15-12A, 15-13,  
25           15-13A, 15-13B, 15-14, 15-14A, 15-14B, 15-14C, 15-14D, 15-14E, 15-14F,  
26           15-14G, 15-15, 15-15A, 15-15B, 15-16, 15-17, 15-17A, 15-17B, 15-18, 15-18A,  
27           15-18B, 15-18C, 15-18D, 15-18E, 15-18F, 15-19, 15-19A, 15-19B, 15-19C, 16-5,  
28           16-6, 16-7, 16-8, 16-9, 17-2, 17-3, 17-4, 17-5, 17-6, 17-7, 17-8, 17-9, 17-10, 17-11,  
29           17-12, 17-13, 17-13A, 17-14, 17-15 and 17-16 of Orleans Parish; Precincts 1-1,

1 1-2, 1-3, 1-5, 2-1, 2-2, 2-3, 2-4, 2-5, 4-1, 4-2, 4-3, 4-4, 7-1, 7-2, 7-3 and 7-4 of St.  
 2 Charles Parish; St. James Parish; Precincts 1-1, 1-2, 1-3, 1-4, 1-5, 2-1, 2-2, 2-3,  
 3 2-4, 3-1, 3-2, 3-3, 3-4, 4-1, 4-2, 4-3, 4-8, 4-9, 5-2, 5-5, 6-1, 6-3, 6-4, 7-5 and 7-7 of  
 4 St. John the Baptist Parish and Precincts 1-1, 3-1A, 4-2, 4-4, 4-5 and 5-1 of West  
 5 Baton Rouge Parish.

6 (3) District 3 is composed of Precincts 1-1, 1-2A, 1-2B, 1-3A, 1-3B, 1-4A,  
 7 1-4B, 1-5A, 1-5B, 1-6, 1-7, 1-8, 1-9, 2-2, 5-2A, 5-2B, 5-3, 5-4, 6-1, 6-2, 6-3A, 6-3B,  
 8 6-4, 6-5, 6-6, 6-7, 6-8, 6-9, 6-10, 6-11, 6-12, 6-13, 6-14, 6-15 and 6-16 of Acadia  
 9 Parish; Calcasieu Parish; Cameron Parish; Iberia Parish; Lafayette Parish;  
 10 Precincts 1-1 and 1-4 of St. Martin Parish; St. Mary Parish; Terrebonne Parish  
 11 and Vermilion Parish.

12 (4) District 4 is composed of Precincts 2-1, 2-3, 2-4, 2-5, 3-1, 3-2, 3-3A,  
 13 3-3B, 3-4, 3-5, 3-6, 3-7, 4-1, 4-2, 4-3, 4-4, 4-5, 4-6, 5-1A, 5-1B, 5-5, 7-2, 7-3 and  
 14 7-4 of Acadia Parish; Allen Parish; Beauregard Parish; Bossier Parish; Caddo  
 15 Parish; De Soto Parish; Jefferson Davis Parish; Natchitoches Parish; Precincts  
 16 C11, C13, C14, C15, C17, C18, C19, C21, C22, C23, C24, C25, C26, C27, C28,  
 17 C30, C31, C32, C33, C34, C35, C36, C37, C38, C39, C40, C41, C42, S1, S2, S4,  
 18 S5, S6, S7, S8, S9, S10, S11, S13, S14, S15, S16, S17, S18, S19, S20, S21, S22, S23,  
 19 S24, S25, S26, S27, S28 and S29 of Rapides Parish; Red River Parish; Sabine  
 20 Parish; Vernon Parish and Webster Parish.

21 (5) District 5 is composed of Avoyelles Parish; Bienville Parish; Caldwell  
 22 Parish; Catahoula Parish; Claiborne Parish; Concordia Parish; East Carroll  
 23 Parish; East Feliciana Parish; Evangeline Parish; Franklin Parish; Grant  
 24 Parish; Jackson Parish; La Salle Parish; Lincoln Parish; Madison Parish;  
 25 Morehouse Parish; Ouachita Parish; Pointe Coupee Parish; Precincts C1, C2,  
 26 C3, C4, C5, C6, C7, C8, C9, C10, C20, N1, N2, N3, N4, N5, N6, N7, N8, N9, N10,  
 27 N11, N12, N13, N14, N15, N16, N17, N18, N19, N20, N21, N22, N23, N24, N25,  
 28 N26, N27, N28 and N29 of Rapides Parish; Richland Parish; Precincts 1-1, 1-2,  
 29 2-1, 3-1 and 6-1 of St. Helena Parish; St. Landry Parish; Tensas Parish; Union

1 **Parish; West Carroll Parish; West Feliciana Parish and Winn Parish.**

2 **(6) District 6 is composed of Precincts 1, 2, 3, 4, 5, 6, 7, 8, 9, 10, 11, 12,**  
3 **13, 14, 15, 16, 17, 18, 19, 20, 21, 22, 23, 24, 25, 26, 27, 30, 31, 32, 33, 34, 35, 40, 41,**  
4 **43, 58, 60 and 61 of Ascension Parish; Precincts 2-3, 3-1, 3-2, 4-1, 4-2, 5-3, 5-4,**  
5 **6-1, 7-1, 7-2, 8-1 and 9-1 of Assumption Parish; Precincts 1-1, 1-7, 1-8, 1-9, 1-12,**  
6 **1-33, 1-34, 1-35, 1-39, 1-40, 1-41, 1-42, 1-43, 1-44, 1-46, 1-47, 1-48, 1-49, 1-52,**  
7 **1-53, 1-54, 1-55, 1-56, 1-57, 1-59, 1-60, 1-64, 1-65, 1-66, 1-69, 1-70, 1-71, 1-72,**  
8 **1-73, 1-74, 1-75, 1-78, 1-80, 1-81, 1-82, 1-83, 1-87, 1-88, 1-89, 1-90, 1-97, 1-98,**  
9 **1-99, 1-102, 1-103, 1-105, 1-107, 2-3, 2-4, 2-5, 2-6, 2-7, 2-8, 2-10, 2-12, 2-13, 2-14,**  
10 **2-15, 2-17, 2-18, 2-19, 2-21, 2-25, 2-26, 2-28, 2-29, 2-31, 2-32, 3-1, 3-2, 3-3, 3-4,**  
11 **3-5, 3-6, 3-7, 3-8, 3-9, 3-10, 3-11, 3-12, 3-13, 3-14, 3-15, 3-16, 3-17, 3-18, 3-19,**  
12 **3-20, 3-21, 3-22, 3-23, 3-24, 3-25, 3-26, 3-27, 3-28, 3-29, 3-30, 3-31, 3-32, 3-33,**  
13 **3-34, 3-35, 3-36, 3-37, 3-38, 3-39, 3-40, 3-41, 3-42, 3-43, 3-44, 3-45, 3-46, 3-47,**  
14 **3-48, 3-49, 3-50, 3-51, 3-52, 3-53, 3-54 and 3-55 of East Baton Rouge Parish;**  
15 **Precincts 4, 5, 6A, 13, 14, 14B, 15A, 15B, 17, 17A, 18, 24, 25, 25A, 25B, 26, 26A,**  
16 **27, 28, 29, 30, 31 and 32 of Iberville Parish; Livingston Parish; Precincts 1-6,**  
17 **3-1, 3-2, 3-3, 3-4, 3-5, 3-6, 5-1, 5-2, 5-3, 5-4, 5-5, 6-1, 6-2, 6-3, 6-4, 6-5, 6-6, 6-7**  
18 **and 6-8 of St. Charles Parish; Precincts 2-2, 3-2, 3-3, 4-1, 4-2, 5-1, 5-2 and 6-2**  
19 **of St. Helena Parish; Precincts 4-4, 5-1, 5-3, 5-4, 5-6, 5-7, 7-2, 7-3 and 7-4 of St.**  
20 **John the Baptist Parish; Precincts 1-2, 1-3, 1-5, 1-7, 2-1, 2-2, 2-3, 2-4, 3-1, 3-1A,**  
21 **3-1B, 3-2, 3-3, 3-4, 3-4A, 3-5, 3-6, 3-9, 4-1, 4-1A, 4-2, 4-3, 4-4, 4-4A, 4-5, 4-6, 5-1,**  
22 **5-2, 5-3, 5-4, 6-1, 6-2, 6-2A, 6-3, 6-3A, 6-3B, 6-4, 7-1, 7-1A, 7-2A, 7-3, 7-4, 7-4A,**  
23 **8-1, 8-3, 8-4, 8-4A, 9-1, 9-2, 9-3, 9-4 and 9-5 of St. Martin Parish; Precincts 1, 2,**  
24 **6, 11, 16, 101, 102, 103, 104, 104A, 105, 106, 106A, 106B, 107, 108, 109, 109A,**  
25 **110, 112, 114, 116 and 118 of Tangipahoa Parish; Washington Parish and**  
26 **Precincts 2-1A, 2-1B, 2-2, 2-3, 3-1B, 3-2, 4-1, 4-3A, 4-3B, 6-1, 6-2, 7-1, 7-2, 7-3**  
27 **and 7-4 of West Baton Rouge Parish.**

28 **B. The precincts referenced in this Act are those precincts identified as**  
29 **Voting Districts (VTDs) in the 2010 Census Redistricting TIGER/Line**

1           **Shapefiles for the State of Louisiana.**

2                   **C. When a precinct referenced in this Act has been subdivided by action**  
3                   **of the parish governing authority on a nongeographic basis or subdivided by**  
4                   **action of the parish governing authority on a geographic basis in accordance**  
5                   **with the provisions of R.S. 18:532.1, the enumeration in this Act of the general**  
6                   **precinct designation shall include all nongeographic and all geographic**  
7                   **subdivisions thereof, however such subdivisions may be designated. The**  
8                   **territorial limits of the districts as provided in this Act shall continue in effect**  
9                   **without change regardless of any changes made to the precincts by the parish**  
10                   **governing authority.**

11           Section 2. R.S. 18:1276 is hereby repealed effective at noon on January 3, 2013.

12           Section 3. The provisions of Section 1 of this Act shall be effective for the purposes  
13 of election of representatives to the United States Congress at the next regularly scheduled  
14 election for representatives to the congress in 2012, commencing on the date and at the time  
15 that the qualifying period opens for such offices. The effectiveness of Section 1 of this Act  
16 for such qualification and election shall not reduce the term of office of any member of the  
17 congress or change the district which any member represents pursuant to R.S. 18:1276. For  
18 subsequent elections of representatives to the United States Congress and for all other  
19 purposes, the provisions of Section 1 of this Act shall become effective at noon on January  
20 3, 2013.

---

The original instrument and the following digest, which constitutes no part  
of the legislative instrument, were prepared by Yolanda J. Dixon.

---

DIGEST

Present law provides for seven La. congressional districts.

Proposed law repeals present law, and further redistricts the present La. congressional  
districts to provide for six La. congressional districts.

Effective for election purposes only for the regular congressional elections in 2012; effective  
for all purposes on 1/3/2013.

(Enacts R.S. 18:1276.1; repeals R.S. 18:1276)

## Plan Statistics

<u>Districts:</u>	<u># of Members</u>	<u>Actual Population</u>	<u>Ideal Population</u>	<u>Absolute Deviation</u>	<u>Relative Deviation</u>
District 1	1	755,517	755,562	-45	-0.006%
District 2	1	755,600	755,562	38	0.005%
District 3	1	755,575	755,562	13	0.002%
District 4	1	755,637	755,562	75	0.010%
District 5	1	755,603	755,562	41	0.005%
District 6	1	755,440	755,562	-122	-0.016%
<b>Grand Total:</b>	<b>6</b>	<b>4,533,372</b>	<b>4,533,372</b>		

Ideal Population Per Member: 755562  
 Number of Districts for Plan Type: 6  
 Range of District Populations: 755,440 to 755,637  
 Absolute Mean Deviation: 33  
 Absolute Range: -122 to 75  
 Absolute Overall Range: 197  
 Relative Mean Deviation: 0.01%  
 Relative Range: -0.02% to 0.01%  
 Relative Overall Range: 0.03%

<b><i>Ideal - Actual:</i></b>	<b>0</b>
<b><i>Remainder:</i></b>	<b>0</b>
<b><i>Unassigned Population:</i></b>	<b>0</b>

# Total Population

	Total Population	Total White	Total Black	Total Asian	Total American Indian	Total Other	Total Hispanic	Reg Total Jan 2011
District 1	755,517	597,625	110,088	17,354	9,239	21,211	56,470	452,720
	100.000%	79.101%	14.571%	2.297%	1.223%	2.807%	7.474%	78.121%
District 2	755,600	235,867	475,960	20,666	4,070	19,037	43,542	449,474
	100.000%	31.216%	62.991%	2.735%	0.539%	2.519%	5.763%	78.706%
District 3	755,575	527,499	190,804	12,178	12,589	12,505	25,347	447,827
	100.000%	69.814%	25.253%	1.612%	1.666%	1.655%	3.355%	79.611%
District 4	755,637	474,590	249,303	9,791	11,023	10,930	24,542	426,852
	100.000%	62.807%	32.992%	1.296%	1.459%	1.446%	3.248%	75.576%
District 5	755,603	462,805	276,902	4,994	5,006	5,896	13,790	463,075
	100.000%	61.250%	36.646%	0.661%	0.663%	0.780%	1.825%	81.292%
District 6	755,440	537,806	183,828	16,568	4,626	12,612	28,869	440,427
	100.000%	71.191%	24.334%	2.193%	0.612%	1.669%	3.821%	77.568%
Grand Total	4,533,372	2,836,192	1,486,885	81,551	46,553	82,191	192,560	2,680,375
	100.000%	62.563%	32.799%	1.799%	1.027%	1.813%	4.248%	78.480%



# Voter Registration

	Reg Total Jan 2011	Reg White Jan 2011	Reg Black Jan 2011	Reg Other Jan 2011	Reg Dem Total Jan 2011	Reg Rep Total Jan 2011	Reg Other Total Jan 2011
District 1	452,720	375,255	49,493	27,972	172,161	166,788	113,771
	78.121%	82.889%	10.932%	6.179%	38.028%	36.841%	25.131%
District 2	449,474	144,131	277,224	28,119	302,309	50,910	96,255
	78.706%	32.067%	61.677%	6.256%	67.258%	11.327%	21.415%
District 3	447,827	328,775	102,599	16,453	215,611	122,602	109,614
	79.611%	73.416%	22.910%	3.674%	48.146%	27.377%	24.477%
District 4	426,852	282,468	128,439	15,945	211,837	119,872	95,143
	75.576%	66.175%	30.090%	3.735%	49.628%	28.083%	22.289%
District 5	463,075	297,144	155,708	10,223	254,324	116,607	92,144
	81.292%	64.168%	33.625%	2.208%	54.921%	25.181%	19.898%
District 6	440,427	333,344	90,614	16,469	198,744	141,411	100,272
	77.568%	75.687%	20.574%	3.739%	45.125%	32.108%	22.767%
<b>Grand Total</b>	<b>2,680,375</b>	<b>1,761,117</b>	<b>804,077</b>	<b>115,181</b>	<b>1,354,986</b>	<b>718,190</b>	<b>607,199</b>

## Splits

	Total Population	Total White	Total Black	Total Asian	Total American Indian	Total Other	VAP Total	VAP White	VAP Black	VAP Asian	VAP American Indian	VAP Other	Reg Total Jan 2011	Reg White Jan 2011	Reg Black Jan 2011	Reg Other Jan 2011
District 1																
*Jefferson	232,558	185,952	24,579	8,982	1,695	11,350	186,310	152,063	17,452	6,880	1,286	8,629	138,660	117,589	8,804	12,267
Lafourche	96,318	76,445	13,363	855	3,457	2,198	72,652	59,362	8,945	612	2,187	1,546	53,711	45,827	6,316	1,568
*Orleans	37,918	33,329	2,742	1,116	193	538	31,208	27,623	2,136	886	144	419	25,314	21,843	1,472	1,999
Plaquemines	23,042	16,246	4,951	844	556	445	16,713	12,086	3,367	583	396	281	14,534	10,541	3,075	918
St. Bernard	35,897	26,579	6,705	873	522	1,218	26,720	20,490	4,338	640	370	882	23,358	19,332	2,829	1,197
St. Tammany	233,740	195,364	28,449	3,807	2,182	3,938	173,604	147,964	18,752	2,570	1,579	2,739	143,614	121,851	13,495	8,268
*Tangipahoa	96,044	63,710	29,299	877	634	1,524	72,301	50,579	19,563	655	483	1,021	53,529	38,272	13,502	1,755
District 1	755,517	597,625	110,088	17,354	9,239	21,211	579,508	470,167	74,553	12,826	6,445	15,517	452,720	375,255	49,493	27,972
	100.000%	79.101%	14.571%	2.297%	1.223%	2.807%	100.000%	81.132%	12.865%	2.213%	1.112%	2.678%	78.121%	82.889%	10.932%	6.179%
District 2																
*Ascension	20,113	6,410	13,119	108	73	403	14,577	5,174	9,004	85	56	258	12,293	4,169	7,813	311
*Assumption	7,178	3,185	3,888	11	28	66	5,328	2,509	2,739	7	17	56	4,590	2,128	2,446	16
*East Baton Rouge	109,536	7,666	100,521	446	252	651	79,407	6,948	71,407	362	200	490	63,830	4,699	57,204	1,927
*Iberville	20,429	7,226	12,963	67	47	126	15,787	6,018	9,589	49	39	92	11,494	3,912	7,411	171
*Jefferson	199,994	86,163	92,420	9,661	1,707	10,043	148,845	69,210	63,850	7,230	1,203	7,352	113,417	51,538	51,329	10,550
*Orleans	305,911	80,099	207,705	9,835	1,503	6,769	239,406	72,057	152,558	7,954	1,255	5,582	186,458	48,593	124,176	13,689
*St. Charles	26,648	18,295	7,600	218	212	323	19,549	13,800	5,254	134	141	220	16,274	11,638	4,101	535
St. James	22,102	10,615	11,290	43	52	102	16,401	8,231	8,039	26	41	64	14,703	7,249	7,260	194
*St. John the Baptist	35,471	12,476	22,101	225	166	503	25,711	9,910	15,195	146	114	346	21,157	7,746	12,721	690
*West Baton Rouge	8,218	3,732	4,353	52	30	51	6,072	2,925	3,046	46	23	32	5,258	2,459	2,763	36
District 2	755,600	235,867	475,960	20,666	4,070	19,037	571,083	196,782	340,681	16,039	3,089	14,492	449,474	144,131	277,224	28,119
	100.000%	31.216%	62.991%	2.735%	0.539%	2.519%	100.000%	34.458%	59.655%	2.809%	0.541%	2.538%	78.706%	32.067%	61.677%	6.256%
District 3																
*Acadia	35,072	25,990	8,575	123	160	224	25,687	19,642	5,703	85	110	147	21,222	16,207	4,770	245
Calcasieu	192,768	136,514	49,825	2,550	1,626	2,253	143,756	105,077	34,139	1,846	1,187	1,507	117,844	86,021	27,975	3,848
Cameron	6,839	6,546	135	10	60	88	5,183	5,011	74	9	38	51	5,536	5,272	188	76
Iberia	73,240	45,551	24,091	1,926	428	1,244	53,398	35,137	15,754	1,308	307	892	45,139	30,016	13,917	1,206
Lafayette	221,578	153,706	58,912	3,891	1,290	3,779	167,315	120,566	40,203	2,884	951	2,711	131,124	95,632	30,155	5,337
*St. Martin	1,569	1,273	250	13	5	28	1,178	966	181	9	3	19	1,065	867	171	27
St. Mary	54,650	32,406	18,290	1,058	1,269	1,627	40,746	25,191	12,797	773	837	1,148	31,845	20,072	10,527	1,246
Terrebonne	111,860	78,591	22,072	1,333	7,375	2,489	82,737	60,621	14,647	986	4,725	1,758	59,299	45,337	10,268	3,694
Vermilion	57,999	46,922	8,654	1,274	376	773	42,522	35,424	5,457	902	259	480	34,753	29,351	4,628	774
District 3	755,575	527,499	190,804	12,178	12,589	12,505	562,522	407,635	128,955	8,802	8,417	8,713	447,827	328,775	102,599	16,453
	100.000%	69.814%	25.253%	1.612%	1.666%	1.655%	100.000%	72.466%	22.924%	1.565%	1.496%	1.549%	79.611%	73.416%	22.910%	3.674%
District 4																

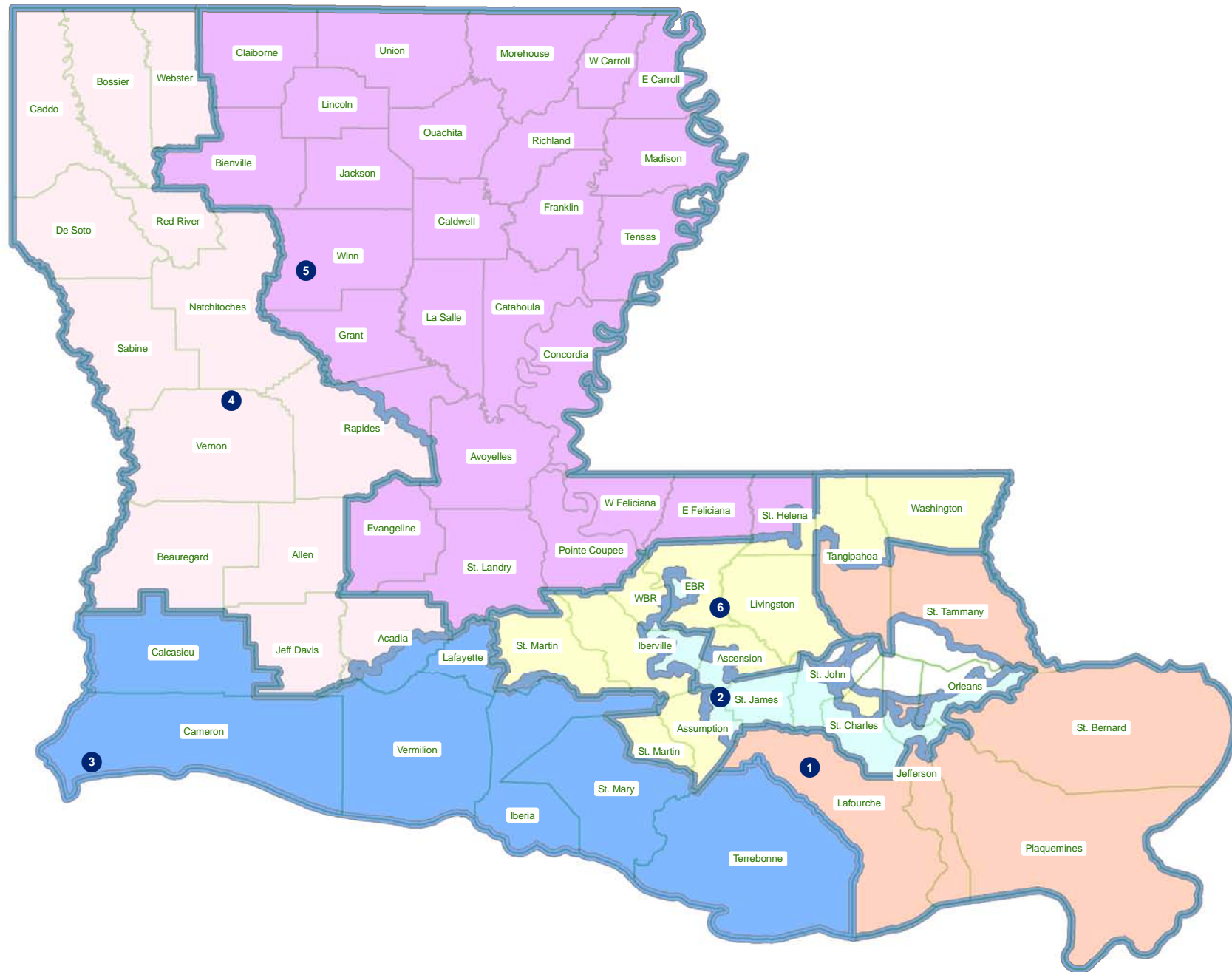
## Splits

	Total Population	Total White	Total Black	Total Asian	Total American Indian	Total Other	VAP Total	VAP White	VAP Black	VAP Asian	VAP American Indian	VAP Other	Reg Total Jan 2011	Reg White Jan 2011	Reg Black Jan 2011	Reg Other Jan 2011
District 4																
*Acadia	26,701	23,137	3,070	73	153	268	19,223	16,912	1,965	46	103	197	16,034	14,139	1,671	224
Allen	25,764	18,435	6,192	220	749	168	19,870	14,288	4,828	154	495	105	13,110	10,190	2,397	523
Beauregard	35,654	29,321	5,016	353	652	312	26,359	21,902	3,569	239	460	189	19,924	16,703	2,304	917
Bossier	116,979	84,430	25,606	2,516	1,139	3,288	86,945	64,692	17,413	1,836	837	2,167	60,834	46,663	11,491	2,680
Caddo	254,969	124,942	122,229	3,230	1,906	2,662	192,315	100,748	85,902	2,363	1,455	1,847	151,374	79,163	66,708	5,503
De Soto	26,656	15,456	10,600	54	331	215	20,006	12,055	7,495	42	273	141	16,396	9,663	6,191	542
Jefferson Davis	31,594	25,125	5,836	98	275	260	23,196	18,871	3,891	66	180	188	19,337	15,808	3,132	397
Natchitoches	39,566	21,494	16,778	197	649	448	29,966	17,226	11,771	151	477	341	22,982	13,181	8,878	923
*Rapides	70,889	43,652	23,752	1,344	997	1,144	52,513	34,333	15,719	956	761	744	41,510	28,585	11,347	1,578
Red River	9,091	5,360	3,633	16	43	39	6,778	4,256	2,450	12	34	26	5,981	3,566	2,377	38
Sabine	24,233	17,155	4,234	84	2,636	124	18,311	13,544	2,835	63	1,796	73	13,837	10,811	2,032	994
Vernon	52,334	39,614	8,313	1,426	1,177	1,804	37,822	29,416	5,349	1,026	848	1,183	21,620	17,881	2,495	1,244
Webster	41,207	26,469	14,044	180	316	198	31,497	20,907	10,110	120	241	119	23,913	16,115	7,416	382
District 4	755,637	474,590	249,303	9,791	11,023	10,930	564,801	369,150	173,297	7,074	7,960	7,320	426,852	282,468	128,439	15,945
	100.000%	62.807%	32.992%	1.296%	1.459%	1.446%	100.000%	65.359%	30.683%	1.252%	1.409%	1.296%	75.576%	66.175%	30.090%	3.735%
District 5																
Avoyelles	42,073	28,188	12,876	174	641	194	31,790	21,850	9,247	126	431	136	23,105	16,874	5,790	441
Bienville	14,353	7,935	6,153	44	132	89	11,012	6,279	4,544	31	105	53	9,256	5,112	4,085	59
Caldwell	10,132	8,213	1,778	30	64	47	7,758	6,314	1,336	23	51	34	6,324	5,351	911	62
Catahoula	10,407	6,985	3,318	9	53	42	8,057	5,543	2,438	8	43	25	6,380	4,749	1,596	35
Claiborne	17,195	8,167	8,820	62	99	47	13,815	6,781	6,889	37	80	28	8,877	4,908	3,872	97
Concordia	20,822	11,959	8,604	59	123	77	15,589	9,298	6,117	41	88	45	12,696	7,997	4,529	170
East Carroll	7,759	2,245	5,398	47	31	38	5,766	1,845	3,830	37	25	29	5,330	1,617	3,664	49
East Feliciana	20,267	10,783	9,250	67	127	40	16,075	8,775	7,123	58	94	25	13,411	7,629	5,126	656
Evangeline	33,984	23,439	9,862	139	161	383	24,817	17,619	6,661	97	117	323	21,407	15,267	5,973	167
Franklin	20,767	13,930	6,620	65	82	70	15,450	10,838	4,471	42	63	36	13,466	9,408	3,978	80
Grant	22,309	18,149	3,602	97	385	76	17,158	13,788	2,978	67	274	51	11,900	10,361	1,284	255
Jackson	16,274	11,084	4,947	67	83	93	12,570	8,681	3,724	39	65	61	9,846	6,879	2,805	162
La Salle	14,890	12,689	1,808	40	215	138	11,366	9,677	1,402	35	143	109	8,427	7,648	621	158
Lincoln	46,735	25,775	19,184	874	230	672	37,130	20,875	14,821	749	183	502	24,016	14,604	8,519	893
Madison	12,093	4,498	7,452	33	55	55	9,071	3,644	5,312	20	45	50	7,634	2,780	4,764	90
Morehouse	27,979	14,345	13,281	142	102	109	21,061	11,583	9,230	102	79	67	18,681	10,048	8,329	304
Ouachita	153,720	92,884	57,194	1,722	705	1,215	113,347	72,316	38,405	1,248	549	829	94,408	59,945	30,997	3,466
Pointe Coupee	22,802	14,010	8,427	69	71	225	17,327	11,073	6,020	44	57	133	15,464	9,584	5,696	184
*Rapides	60,724	39,721	19,398	568	685	352	45,086	30,246	13,649	421	509	261	36,546	24,743	10,760	1,043

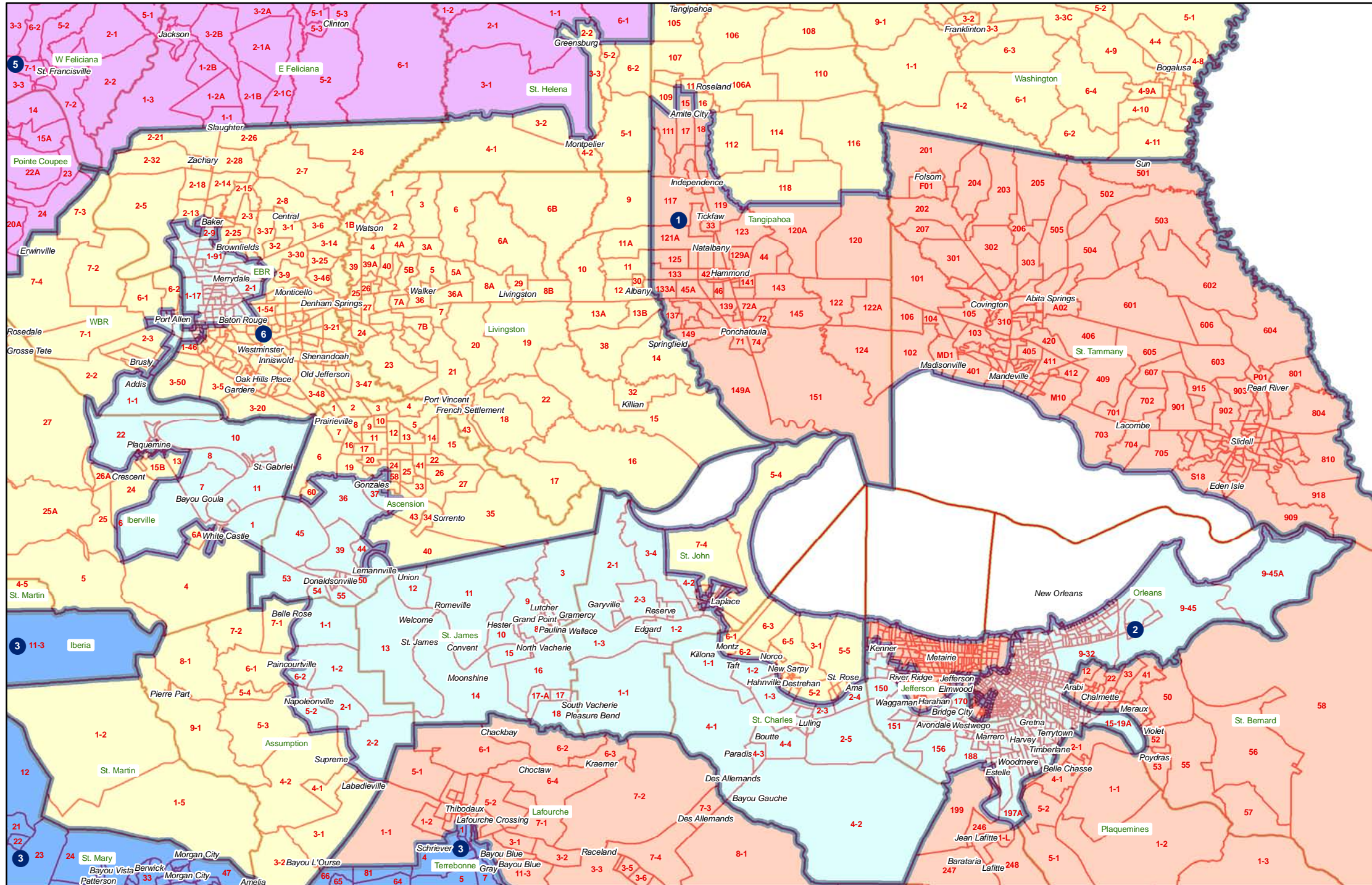
## Splits

	Total Population	Total White	Total Black	Total Asian	Total American Indian	Total Other	VAP Total	VAP White	VAP Black	VAP Asian	VAP American Indian	VAP Other	Reg Total Jan 2011	Reg White Jan 2011	Reg Black Jan 2011	Reg Other Jan 2011
District 5																
Richland	20,725	12,879	7,544	92	96	114	15,440	9,999	5,237	65	70	69	12,939	8,173	4,646	120
*St. Helena	5,694	2,583	3,036	8	42	25	4,317	2,085	2,179	5	35	13	4,463	2,021	2,403	39
St. Landry	83,384	46,615	35,153	395	406	815	60,704	35,593	23,997	266	278	570	56,549	31,901	23,591	1,057
Tensas	5,252	2,202	2,991	13	15	31	3,923	1,796	2,085	11	9	22	4,131	1,807	2,304	20
Union	22,721	15,682	6,242	49	115	633	17,493	12,568	4,439	31	91	364	14,964	10,863	3,709	392
West Carroll	11,604	9,497	1,870	34	86	117	8,746	7,254	1,330	24	62	76	7,167	6,017	1,096	54
West Feliciana	15,625	8,125	7,317	42	35	106	12,907	6,412	6,364	24	33	74	6,796	4,448	2,254	94
Winn	15,313	10,223	4,777	53	167	93	11,871	8,018	3,619	44	129	61	8,892	6,410	2,406	76
District 5	755,603	462,805	276,902	4,994	5,006	5,896	569,646	360,750	197,447	3,695	3,708	4,046	463,075	297,144	155,708	10,223
	100.000%	61.250%	36.646%	0.661%	0.663%	0.780%	100.000%	63.329%	34.661%	0.649%	0.651%	0.710%	81.292%	64.168%	33.625%	2.208%
District 6																
*Ascension	87,102	72,162	11,347	1,126	513	1,954	61,883	52,163	7,407	731	356	1,226	51,811	44,063	5,443	2,305
*Assumption	16,243	12,450	3,362	57	162	212	12,337	9,687	2,360	44	108	138	10,198	7,965	2,140	93
*East Baton Rouge	330,635	207,261	102,013	13,118	1,661	6,582	257,099	170,927	69,889	10,109	1,286	4,888	188,787	133,452	46,606	8,729
*Iberville	12,958	9,054	3,657	57	70	120	10,098	7,236	2,669	36	59	98	8,958	6,502	2,343	113
Livingston	128,026	117,601	6,941	906	1,055	1,523	92,696	85,855	4,535	565	782	959	71,580	66,508	2,985	2,087
*St. Charles	26,132	18,245	6,795	357	159	576	19,023	13,645	4,614	223	122	419	15,431	11,275	3,353	803
*St. Helena	5,509	2,451	2,978	8	30	42	4,123	1,951	2,112	6	25	29	3,969	1,795	2,114	60
*St. John the Baptist	10,453	7,025	2,843	189	71	325	7,857	5,498	1,932	144	50	233	6,628	4,720	1,544	364
*St. Martin	50,591	33,040	16,147	465	345	594	37,211	25,354	10,909	307	224	417	32,784	21,999	9,715	1,070
*Tangipahoa	25,053	16,496	8,082	78	200	197	18,376	12,552	5,496	55	148	125	15,135	10,307	4,487	341
Washington	47,168	31,482	14,884	145	305	352	35,305	24,363	10,374	101	238	229	25,608	17,973	7,239	396
*West Baton Rouge	15,570	10,539	4,779	62	55	135	11,789	8,142	3,471	46	44	86	9,538	6,785	2,645	108
District 6	755,440	537,806	183,828	16,568	4,626	12,612	567,797	417,373	125,768	12,367	3,442	8,847	440,427	333,344	90,614	16,469
	100.000%	71.191%	24.334%	2.193%	0.612%	1.669%	100.000%	73.507%	22.150%	2.178%	0.606%	1.558%	77.568%	75.687%	20.574%	3.739%

# Congress - Statewide



# Congress - Baton Rouge to Orleans



# Congress - St. Martin to Baton Rouge

