

2024 Regular Session

SENATE BILL NO. 381

BY SENATOR MILLER

COURTS. Provides for the redistricting of the Louisiana Supreme Court. (2/3 - CA5s4)
(gov sig)

1 AN ACT

2 To enact R.S. 13:101.2 and 101.3 and to repeal R.S. 13:101, 101.1, and 312.4, relative to the
3 supreme court; to provide relative to redistricting supreme court justice districts; to
4 provide for the filling of vacancies; to eliminate statutory provisions for a temporary
5 additional judgeship for the Court of Appeal for the Fourth Circuit and such judge's
6 appointment to the supreme court; and to provide for related matters.

7 Be it enacted by the Legislature of Louisiana:

8 Section 1. R.S. 13:101.2 and 101.3 are hereby enacted to read as follows:

9 **§101.2. Supreme court districts; justices**

10 **The state shall be divided into seven supreme court districts. The**
11 **supreme court shall be composed of one justice elected from each of the seven**
12 **districts as set forth below:**

13 **(1) District 1 is composed of Precincts of Jefferson Parish; Orleans**
14 **Parish; Precincts of St. Charles Parish; St. James Parish and St. John the**
15 **Baptist Parish.**

16 **(2) District 2 is composed of Precincts 1-1, 1-2, 1-3, 1-4, 1-5, 1-6, 1-7, 1-8,**
17 **1-10, 1-11, 1-12, 1-13, 1-14, 1-15, 1-16, 1-17, 1-18, 1-19, 1-20, 1-21, 1-22, 1-23,**

1 1-24, 1-25, 1-26, 1-27, 1-28, 1-29, 1-30, 1-31, 1-32, 1-35, 1-36, 1-37, 1-38, 1-39,
 2 1-40, 1-41, 1-42, 1-43, 1-44, 1-45, 1-46, 1-47, 1-48, 1-50, 1-51, 1-54, 1-55, 1-56,
 3 1-57, 1-58, 1-59, 1-60, 1-61, 1-62, 1-63, 1-64, 1-65, 1-66, 1-67, 1-68, 1-69, 1-70,
 4 1-71, 1-73, 1-75, 1-76, 1-77, 1-78, 1-81, 1-82, 1-83, 1-84, 1-85, 1-86, 1-87, 1-88,
 5 1-91, 1-92, 1-93, 1-94, 1-95, 1-96, 1-97, 1-100, 1-101, 1-102, 1-104, 2-1, 2-2, 2-3,
 6 2-4, 2-5, 2-9, 2-10, 2-11, 2-12, 2-13, 2-14, 2-15, 2-16, 2-17, 2-18, 2-19, 2-20, 2-21,
 7 2-22, 2-23, 2-24, 2-25, 2-26, 2-27, 2-28, 2-29, 2-30, 2-31, 2-32, 2-34, 2-35, 2-36,
 8 2-37, 2-38, 3-5, 3-8, 3-12, 3-20, 3-24, 3-28, 3-32, 3-42, 3-44, 3-50, 3-54, 3-55, 3-57,
 9 3-69 and 3-72 of East Baton Rouge Parish; Precincts 1, 2, 3, 3A, 4, 4A, 4B, 4C,
 10 5, 6, 6A, 7, 8, 9, 10, 10A, 11, 12A, 13A and 14C of East Feliciana Parish;
 11 Iberville Parish; Pointe Coupee Parish; Precincts 1-2, 2-1, 2-2, 3-1, 3-2, 4-2 and
 12 5-1 of St. Helena Parish and West Baton Rouge Parish.

13 (3) District 3 is composed of Precincts 1, 2, 3, 4, 5, 7, 8, 9, 10, 11, 12, 13,
 14 14, 15, 16, 17, 18, 19, 20, 21, 22, 23, 24, 25, 26, 27, 28, 29, 30, 31, 32, 33, 34, 35, 36,
 15 37, 38, 39, 40, 41, 42, 43, 44, 45, 46, 51, 52, 53, 54, 55, 56, 57, 58, 59, 60, 61, 62, 63,
 16 64, 65, 66, 67, 68, 69, 70, 71, 72, 73, 74, 75, 76, 77, 78, 79, 80, 81, 82, 83, 84, 85, 86,
 17 87, 88, 89, 90, 91, 92, 93, 94, 95, 96, 97, 98, 99, 100, 101, 102, 103, 104, 105, 106,
 18 108, 115, 116, 117, 118, 119, 120, 121, 122, 123, 124, 125A, 125B, 126, 127, 128,
 19 129, 130, 131, 132, 133, 134, 136, 138, 150, 151, 152, 153, 154, 155, 156, 157A,
 20 157B, 170, 171, 172, 173, 174, 175, 176, 177, 178, 179A, 179B, 180, 181, 182, 183,
 21 184, 185A, 185B, 187, 188, 189, 190, 191, 192, 193A, 193B, 194A, 194B, 195, 196,
 22 197A, 197B, 198, 199, 200, 201, 202, 203, 204, 205, 210, 211, 212, 213A, 213B,
 23 213C, 214A, 214B, 215, 216A, 216B, 216C, 217, 225, 226, 227, 228, 229, 230, 231,
 24 232A, 232B, 234, 235, 236, 237, 238A, 238B, 246, 247, 248, 1-G, 2-G, 3-G, 4-G,
 25 5-G, 6-G, 7-G, 8-G, 9-G, 10-G, 11-G, 12-G, 13-G, 1-GI, 1-H, 2-H, 3-H, 4-H, 5-H,
 26 6-H, 7-H, 8-H, 9-H, 1-K, 2-K, 3-K, 4-K, 5-K, 6-KA, 6-KB, 7-KA, 7-KB, 8-K, 9-K,
 27 10-K, 11-K, 12-K, 13-KA, 13-KB, 14-K, 15-K, 16-K, 17-K, 18-K, 19-K, 20-K,
 28 21-K, 22-K, 23-K, 24-K, 25-K, 26-K, 27-K, 28-K, 29-K, 30-K, 31-K, 33-K, 34-K,
 29 35-K, 1-L, 1-W, 2-W, 3-W, 4-W, 5-W, 6-W and 7-W of Jefferson Parish;

1 Plaquemines Parish; St. Bernard Parish and St. Tammany Parish.

2 (4) District 4 is composed of Avoyelles Parish; Caldwell Parish;
 3 Catahoula Parish; Concordia Parish; Precincts 1-9, 1-33, 1-34, 1-49, 1-52, 1-53,
 4 1-72, 1-74, 1-79, 1-80, 1-89, 1-90, 1-98, 1-99, 1-103, 1-105, 1-107, 2-6, 2-7, 2-8,
 5 2-33, 3-1, 3-2, 3-3, 3-4, 3-6, 3-7, 3-9, 3-10, 3-11, 3-13, 3-14, 3-15, 3-16, 3-17, 3-18,
 6 3-19, 3-21, 3-22, 3-23, 3-25, 3-26, 3-27, 3-29, 3-30, 3-31, 3-33, 3-34, 3-35, 3-36,
 7 3-37, 3-38, 3-39, 3-40, 3-41, 3-43, 3-45, 3-46, 3-47, 3-48, 3-49, 3-51, 3-52, 3-53,
 8 3-56, 3-58, 3-59, 3-60, 3-61, 3-62, 3-63, 3-64, 3-65, 3-66, 3-67, 3-68, 3-70, 3-71,
 9 3-73, 3-74, 3-75 and 3-76 of East Baton Rouge Parish; East Carroll Parish;
 10 Precincts 12, 13 and 14 of East Feliciana Parish; Franklin Parish; La Salle
 11 Parish; Livingston Parish; Madison Parish; Morehouse Parish; Precincts 1, 1A,
 12 2, 3, 4, 5, 6, 7, 8, 9, 9A, 43, 50, 60, 64, 66, 67, 68, 70, 72, 73, 74, 75, 76 and 79 of
 13 Ouachita Parish; Richland Parish; Precincts 1-1, 4-1, 6-1 and 6-2 of St. Helena
 14 Parish; Tangipahoa Parish; Tensas Parish; Washington Parish; West Carroll
 15 Parish and West Feliciana Parish.

16 (5) District 5 is composed of Bienville Parish; Bossier Parish; Caddo
 17 Parish; Claiborne Parish; De Soto Parish; Grant Parish; Jackson Parish;
 18 Lincoln Parish; Natchitoches Parish; Precincts 10, 11, 12, 13, 14, 15, 16, 17, 18,
 19 19, 20, 21, 22, 23, 24, 25, 26, 27, 28, 30, 31, 32, 33, 34, 35, 36, 37, 38, 39, 40, 41, 42,
 20 44, 44A, 45, 46, 47, 48, 49, 51, 51A, 52, 52A, 53, 54, 55, 56, 56A, 57, 58, 59, 61, 62,
 21 63, 65, 65A, 69, 71, 77 and 78 of Ouachita Parish; Red River Parish; Sabine
 22 Parish; Union Parish; Webster Parish and Winn Parish.

23 (6) District 6 is composed of Acadia Parish; Allen Parish; Beauregard
 24 Parish; Calcasieu Parish; Cameron Parish; Evangeline Parish; Jefferson Davis
 25 Parish; Precincts 3, 8, 9, 25, 26, 27, 28, 29, 30, 31, 32, 33, 34, 35, 36, 37, 67, 71,
 26 86, 114, 119, 124 and 133 of Lafayette Parish; Rapides Parish; St. Landry
 27 Parish; Vermilion Parish and Vernon Parish.

28 (7) District 7 is composed of Ascension Parish; Assumption Parish;
 29 Iberia Parish; Precincts 1, 2, 4, 5, 6, 7, 10, 11, 12, 13, 14, 15, 16, 17, 18, 19, 20, 21,

1 22, 23, 24, 38, 39, 40, 41, 42, 43, 44, 45, 46, 47, 48, 49, 50, 51, 52, 53, 54, 55, 56, 57,
2 58, 59, 60, 61, 63, 64, 65, 66, 68, 69, 70, 72, 73, 74, 75, 76, 77, 78, 79, 80, 81, 82, 83,
3 84, 85, 87, 88, 89, 90, 91, 92, 93, 94, 95, 96, 97, 98, 99, 100, 101, 102, 103, 104, 105,
4 106, 107, 108, 109, 110, 111, 112, 113, 115, 116, 117, 118, 120, 121, 122, 123, 125,
5 126, 127, 128, 129, 130, 131, 134, 135 and 136 of Lafayette Parish; Lafourche
6 Parish; Precincts 1-1, 1-2, 1-3, 1-4, 1-5, 1-6, 2-1, 2-3, 2-4, 2-5, 2-6, 3-1, 3-2, 3-3,
7 4-1, 4-2, 4-3, 4-4, 4-5, 5-1, 5-3, 5-4, 5-5, 6-1, 6-2, 6-3, 6-4, 6-6, 6-8, 7-1, 7-2, 7-3,
8 7-4, 7-5 and 7-6 of St. Charles Parish; St. Martin Parish; St. Mary Parish and
9 Terrebonne Parish.

10 Section 2. R.S. 13:101, 101.1, and 312.4 are hereby repealed.

11 Section 3.(A) The precincts referenced in this Act are those contained in the file
12 named "2024 Precinct Shape files (01-10-2024)" available on the Legislature of Louisiana's
13 website on the effective date of this Section. The 2024 Precinct Shape files are based upon
14 those Voting Districts (VTDs) contained in the 2020 Census Redistricting TIGER/Line
15 Shape files for the State of Louisiana as those files have been modified and validated
16 through the data verification program of the Louisiana House of Representatives and the
17 Louisiana Senate to represent precinct changes submitted through January 10, 2024, to the
18 Legislature of Louisiana by parish governing authorities pursuant to the provisions of R.S.
19 18:532 and 532.1.

20 (B) When a precinct referenced in this Act has been subdivided by action of the
21 parish governing authority on a nongeographic basis or subdivided by action of the parish
22 governing authority on a geographic basis in accordance with the provisions of R.S.
23 18:532.1, the enumeration in this Act of the general precinct designation shall include all
24 nongeographic and all geographic subdivisions thereof, however such subdivisions may be
25 designated.

26 (C) The territorial limits of the districts as provided in this Act shall continue in
27 effect until changed by law regardless of any subsequent change made to the precincts by
28 the parish governing authority.

29 Section 4. This Act shall become effective upon signature of the governor or, if not

1 signed by the governor, upon expiration of the time for bills to become law without signature
 2 by the governor, as provided in Article III, Section 18 of the Constitution of Louisiana. If
 3 this Act is vetoed by the governor and subsequently approved by the legislature, the
 4 provisions of this Section and Section 3 of this Act shall become effective on the day
 5 following such approval.

The original instrument and the following digest, which constitutes no part
 of the legislative instrument, were prepared by Matt DeVille.

DIGEST

SB 381 Engrossed

2024 Regular Session

Miller

Present constitution (Const. Art. V, §3) provides the supreme court must be composed of a chief justice and six associate justices.

Present constitution (Const. Art. V, §4) provides the state must be divided into at least six supreme court districts, and at least one judge shall be elected from each. Further provides the districts and the number of judges assigned to each on the effective date of the constitution are retained, subject to change by law enacted by two-thirds of the elected members of each house of the legislature.

Proposed law redraws district boundaries for the seven supreme court districts and assigns each justice in office to a district.

Proposed law specifies that precincts referenced in district descriptions are those precincts contained in the file named "2024 Precinct Shape files (01-10-2024)" available on the legislature's website. The 2023 Precinct Shape files are based upon those Voting Districts (VTDs) contained in the 2020 Census Redistricting TIGER/Line Shape files for the State of La. as those files have been modified and validated through the data verification program of the La. House of Representatives and the La. Senate to represent precinct changes submitted through Jan. 10, 2024, to the Legislature of La. by parish governing authorities.

Also specifies that if any such precinct has been subdivided by action of the parish governing authority on a nongeographic basis or subdivided by action of the parish governing authority on a geographic basis in accordance with present law, the enumeration of the general precinct designation shall include all nongeographic and all geographic subdivisions thereof. Further provides that the territorial limits of the districts as enacted shall continue in effect until changed by law regardless of any subsequent change made to the precincts by the parish governing authority.

Population data in the summaries accompanying this digest are derived from 2020 Census Redistricting Data (Public Law 94-171), Summary File for La. Population data, statistical information, and maps are supplied for purposes of information and analysis and comprise no part of proposed law.

Proposed law provides that the new districts become effective upon signature of governor or lapse of time for gubernatorial action.

Effective upon signature of the governor or lapse of time for gubernatorial action.

(Adds R.S. 13:101.2 and 101.3; repeals R.S. 13:101, 101.1, and 312.4)

Plan Statistics

Plan: Senate Bill 381 Engrossed (Miller)

<u>Districts:</u>	<u># of Members</u>	<u>Actual Population</u>	<u>Ideal Population</u>	<u>Absolute Deviation</u>	<u>Relative Deviation</u>
District 1	1	446,666	665,393	-218,727	-32.872%
District 2	1	382,032	665,393	-283,361	-42.586%
District 3	1	772,630	665,393	107,237	16.116%
District 4	1	761,165	665,393	95,772	14.393%
District 5	1	752,635	665,393	87,242	13.111%
District 6	1	771,529	665,393	106,136	15.951%
District 7	1	771,100	665,393	105,707	15.886%
Grand Total:	7	4,657,757	4,657,751		

Ideal Population Per Member:	665393		
Number of Districts for Plan Type:	7		
Range of District Populations:	382,032	to	772,630
Absolute Mean Deviation:	55,800		
Absolute Range:	-283,361	to	107,237
Absolute Overall Range:	390,598		
Relative Mean Deviation:	21.56%		
Relative Range:	-42.59%	to	16.12%
Relative Overall Range:	58.71%		

<i>Ideal - Actual:</i>	-6
<i>Remainder:</i>	6
<i>Unassigned Population:</i>	0

Total Population

Plan: Senate Bill 381 Engrossed (Miller)

	Total Population	Total White	Total Black	Total Asian	Total American Indian	Total Other	Total Hispanic	VAP Total	VAP White	VAP Black	VAP Asian	VAP American Indian	VAP Other	VAP Hispanic Total
District 1	446,666	150,312	253,927	13,319	4,213	24,895	34,651	354,204	129,757	191,802	10,874	3,362	18,409	25,603
	100.000%	33.652%	56.849%	2.982%	0.943%	5.574%	7.758%	100.000%	36.633%	54.150%	3.070%	0.949%	5.197%	7.228%
District 2	382,032	135,163	216,818	8,704	3,334	18,013	21,493	297,373	114,356	160,402	7,003	2,596	13,016	15,476
	100.000%	35.380%	56.754%	2.278%	0.873%	4.715%	5.626%	100.000%	38.455%	53.940%	2.355%	0.873%	4.377%	5.204%
District 3	772,630	456,360	182,597	31,496	14,990	87,187	108,147	595,991	368,604	130,737	23,674	11,184	61,792	75,199
	100.000%	59.066%	23.633%	4.076%	1.940%	11.284%	13.997%	100.000%	61.847%	21.936%	3.972%	1.877%	10.368%	12.617%
District 4	761,165	497,472	203,334	14,672	12,599	33,088	38,274	583,547	394,811	144,828	10,740	9,534	23,634	26,420
	100.000%	65.357%	26.714%	1.928%	1.655%	4.347%	5.028%	100.000%	67.657%	24.819%	1.840%	1.634%	4.050%	4.527%
District 5	752,635	413,066	284,038	11,229	16,767	27,535	33,238	576,815	330,998	205,351	8,268	12,784	19,414	22,946
	100.000%	54.883%	37.739%	1.492%	2.228%	3.658%	4.416%	100.000%	57.384%	35.601%	1.433%	2.216%	3.366%	3.978%
District 6	771,529	515,576	199,266	13,367	13,620	29,700	36,522	580,366	400,154	139,815	9,642	9,994	20,761	24,781
	100.000%	66.825%	25.827%	1.733%	1.765%	3.849%	4.734%	100.000%	68.949%	24.091%	1.661%	1.722%	3.577%	4.270%
District 7	771,100	489,703	203,139	14,501	21,537	42,220	50,224	582,252	385,831	142,834	10,215	14,786	28,586	33,237
	100.000%	63.507%	26.344%	1.881%	2.793%	5.475%	6.513%	100.000%	66.265%	24.531%	1.754%	2.539%	4.910%	5.708%
Grand Total	4,657,757	2,657,652	1,543,119	107,288	87,060	262,638	322,549	3,570,548	2,124,511	1,115,769	80,416	64,240	185,612	223,662
	100.000%	57.059%	33.130%	2.303%	1.869%	5.639%	6.925%	100.000%	59.501%	31.249%	2.252%	1.799%	5.198%	6.264%

Voter Registration

Plan: Senate Bill 381 Engrossed (Miller)

	Reg Total Dec 2023	Reg White Dec 2023	Reg Black Dec 2023	Reg Other Dec 2023	Reg Dem Total Dec 2023	Reg Rep Total Dec 2023	Reg Other Total Dec 2023
District 1	280,405	102,579	154,439	23,387	177,527	30,971	71,907
	79.165%	36.582%	55.077%	8.340%	63.311%	11.045%	25.644%
District 2	222,317	84,818	127,525	9,974	125,485	42,648	54,184
	74.760%	38.152%	57.362%	4.486%	56.444%	19.183%	24.372%
District 3	466,568	321,238	95,858	49,472	146,769	175,174	144,625
	78.284%	68.851%	20.545%	10.603%	31.457%	37.545%	30.998%
District 4	447,429	324,665	105,021	17,743	143,314	188,784	115,331
	76.674%	72.562%	23.472%	3.966%	32.031%	42.193%	25.776%
District 5	425,823	260,608	147,416	17,799	158,883	159,361	107,579
	73.823%	61.201%	34.619%	4.180%	37.312%	37.424%	25.264%
District 6	439,109	320,008	101,527	17,574	149,356	172,703	117,050
	75.661%	72.877%	23.121%	4.002%	34.013%	39.330%	26.656%
District 7	460,636	326,530	110,043	24,063	151,172	181,985	127,479
	79.113%	70.887%	23.889%	5.224%	32.818%	39.507%	27.675%
Grand Total	2,742,287	1,740,446	841,829	160,012	1,052,506	951,626	738,155

Splits

Plan: Senate Bill 381 Engrossed (Miller)

	Total Population	Total White	Total Black	Total Asian	Total American Indian	Total Other	VAP Total	VAP White	VAP Black	VAP Asian	VAP American Indian	VAP Other	Reg Total Dec 2023	Reg White Dec 2023	Reg Black Dec 2023	Reg Other Dec 2023
District 1																
*Jefferson	0	0	0	0	0	0	0	0	0	0	0	0	0	0	0	0
Orleans	383,997	126,462	218,969	12,856	3,666	22,044	306,196	110,252	166,068	10,520	2,948	16,408	238,390	86,125	130,590	21,675
*St. Charles	0	0	0	0	0	0	0	0	0	0	0	0	0	0	0	0
St. James	20,192	9,973	9,762	60	82	315	15,505	7,883	7,297	31	64	230	14,531	7,116	7,196	219
St. John the Baptist	42,477	13,877	25,196	403	465	2,536	32,503	11,622	18,437	323	350	1,771	27,484	9,338	16,653	1,493
District 1	446,666	150,312	253,927	13,319	4,213	24,895	354,204	129,757	191,802	10,874	3,362	18,409	280,405	102,579	154,439	23,387
	100.000%	33.652%	56.849%	2.982%	0.943%	5.574%	100.000%	36.633%	54.150%	3.070%	0.949%	5.197%	79.165%	36.582%	55.077%	8.340%
District 2																
*East Baton Rouge	280,108	81,382	173,742	8,002	2,271	14,711	217,364	70,278	128,359	6,481	1,806	10,440	155,392	47,904	99,020	8,468
*East Feliciana	17,781	10,621	6,519	87	247	307	14,702	8,993	5,220	59	183	247	11,836	7,051	4,384	401
Iberville	30,241	14,833	13,730	202	274	1,202	24,086	12,462	10,232	149	221	1,022	19,906	9,999	9,484	423
Pointe Coupee	20,758	12,395	7,504	107	159	593	16,250	10,108	5,502	91	119	430	14,107	9,040	4,837	230
*St. Helena	5,945	1,625	4,153	19	57	91	4,445	1,369	2,940	14	48	74	4,323	1,204	3,036	83
West Baton Rouge	27,199	14,307	11,170	287	326	1,109	20,526	11,146	8,149	209	219	803	16,753	9,620	6,764	369
District 2	382,032	135,163	216,818	8,704	3,334	18,013	297,373	114,356	160,402	7,003	2,596	13,016	222,317	84,818	127,525	9,974
	100.000%	35.380%	56.754%	2.278%	0.873%	4.715%	100.000%	38.455%	53.940%	2.355%	0.873%	4.377%	74.760%	38.152%	57.362%	4.486%
District 3																
*Jefferson	440,781	220,935	126,217	23,024	7,686	62,919	344,654	184,135	92,175	17,692	5,835	44,817	253,433	152,936	66,202	34,295
Plaquemines	23,515	14,287	5,428	1,317	697	1,786	17,334	10,856	3,857	925	500	1,196	13,143	8,996	2,934	1,213
St. Bernard	43,764	24,497	12,309	1,381	947	4,630	31,775	18,992	7,944	982	688	3,169	25,685	18,044	5,593	2,048
St. Tammany	264,570	196,641	38,643	5,774	5,660	17,852	202,228	154,621	26,761	4,075	4,161	12,610	174,307	141,262	21,129	11,916
District 3	772,630	456,360	182,597	31,496	14,990	87,187	595,991	368,604	130,737	23,674	11,184	61,792	466,568	321,238	95,858	49,472
	100.000%	59.066%	23.633%	4.076%	1.940%	11.284%	100.000%	61.847%	21.936%	3.972%	1.877%	10.368%	78.284%	68.851%	20.545%	10.603%
District 4																
Avoyelles	39,693	25,625	11,678	434	767	1,189	30,578	20,269	8,311	379	570	1,049	21,438	15,242	5,622	574
Caldwell	9,645	7,646	1,632	51	150	166	7,478	5,969	1,224	46	116	123	5,813	4,959	762	92
Catahoula	8,906	5,776	2,395	46	119	570	6,951	4,557	1,736	33	87	538	6,113	4,363	1,695	55
Concordia	18,687	10,275	7,725	122	233	332	14,217	8,108	5,613	100	167	229	11,419	6,816	4,418	185
*East Baton Rouge	176,673	114,687	39,656	8,423	2,456	11,451	138,248	93,603	28,431	6,118	1,941	8,155	113,445	84,841	20,482	8,122
East Carroll	7,459	2,054	5,272	29	43	61	5,901	1,773	4,043	19	27	39	4,564	1,218	3,305	41
*East Feliciana	1,758	895	822	4	15	22	1,481	747	698	2	15	19	1,491	754	691	46
Franklin	19,774	12,492	6,802	70	205	205	15,028	9,901	4,779	44	153	151	12,350	8,524	3,718	108
La Salle	14,791	11,348	1,422	283	372	1,366	11,563	8,636	1,065	264	271	1,327	8,380	7,633	583	164
Livingston	142,282	116,855	12,658	1,697	3,111	7,961	105,141	88,432	8,136	1,099	2,311	5,163	82,405	73,655	5,642	3,108
Madison	10,017	3,475	6,363	20	59	100	7,435	2,906	4,391	9	48	81	7,068	2,439	4,518	111

Splits

Plan: Senate Bill 381 Engrossed (Miller)

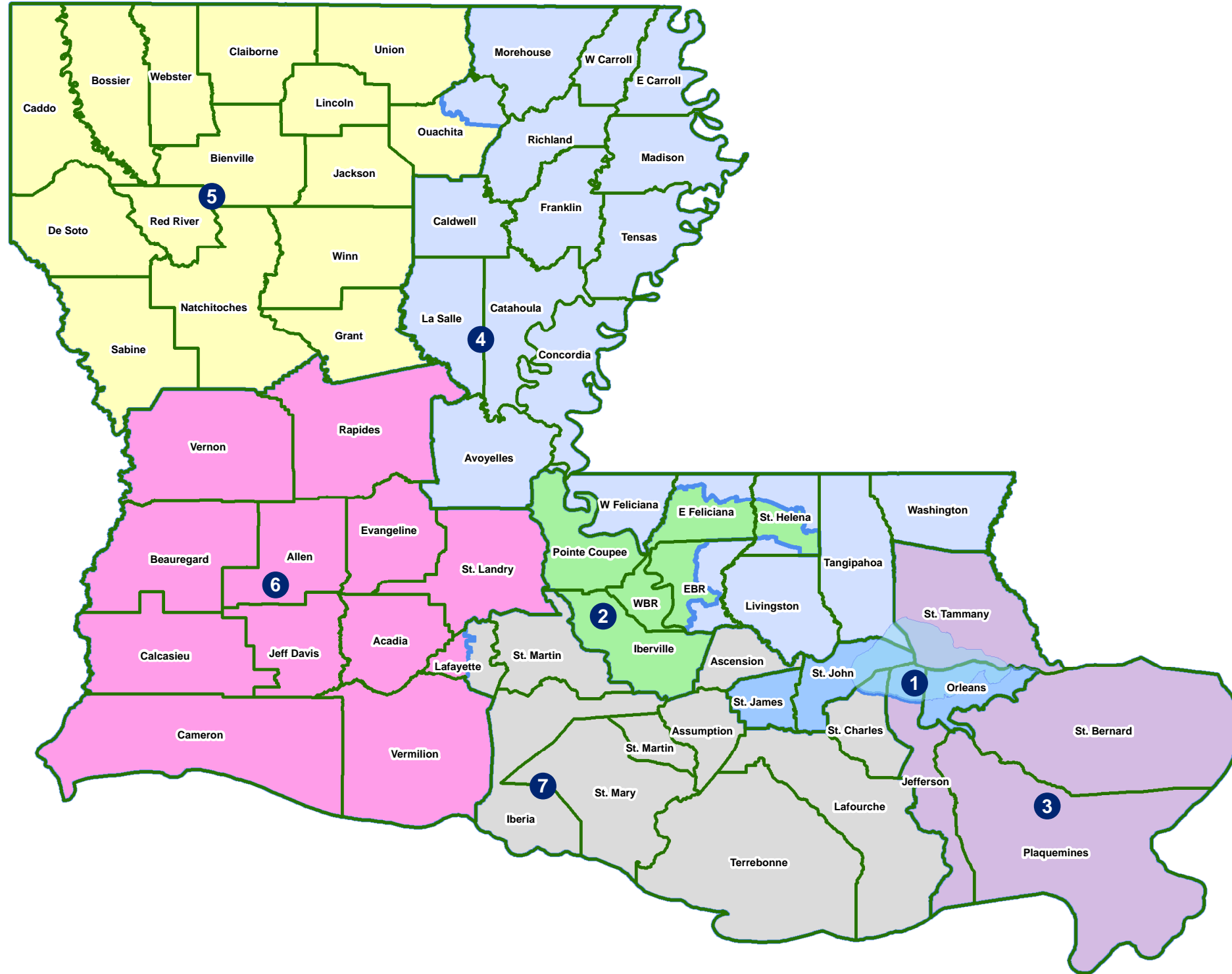
	Total Population	Total White	Total Black	Total Asian	Total American Indian	Total Other	VAP Total	VAP White	VAP Black	VAP Asian	VAP American Indian	VAP Other	Reg Total Dec 2023	Reg White Dec 2023	Reg Black Dec 2023	Reg Other Dec 2023
District 4																
Morehouse	25,629	12,281	12,484	160	370	334	20,062	10,095	9,300	117	279	271	15,440	7,806	7,377	257
*Ouachita	53,005	27,576	22,154	1,401	743	1,131	40,071	22,141	15,486	1,088	564	792	32,140	18,608	12,185	1,347
Richland	20,043	11,785	7,603	83	258	314	15,383	9,338	5,546	66	203	230	13,141	8,144	4,753	244
*St. Helena	4,975	2,902	1,878	20	77	98	4,018	2,436	1,431	14	61	76	3,937	2,422	1,456	59
Tangipahoa	133,157	81,336	41,879	1,474	2,454	6,014	101,491	65,205	29,217	1,100	1,827	4,142	63,286	46,172	14,812	2,302
Tensas	4,147	1,744	2,312	23	26	42	3,235	1,446	1,728	12	23	26	3,485	1,510	1,937	38
Washington	45,463	29,943	13,434	216	736	1,134	34,951	23,743	9,732	154	561	761	27,151	18,603	7,892	656
West Carroll	9,751	7,894	1,425	27	180	225	7,532	6,223	1,010	20	136	143	6,871	5,770	1,013	88
West Feliciana	15,310	10,883	3,740	89	225	373	12,783	9,283	2,951	56	174	319	7,492	5,186	2,160	146
District 4	761,165	497,472	203,334	14,672	12,599	33,088	583,547	394,811	144,828	10,740	9,534	23,634	447,429	324,665	105,021	17,743
	100.000%	65.357%	26.714%	1.928%	1.655%	4.347%	100.000%	67.657%	24.819%	1.840%	1.634%	4.050%	76.674%	72.562%	23.472%	3.966%
District 5																
Bienville	12,981	6,950	5,600	57	207	167	10,073	5,486	4,284	30	162	111	8,336	4,509	3,728	99
Bossier	128,746	81,052	32,551	3,492	3,273	8,378	95,876	62,931	22,440	2,448	2,477	5,580	65,726	48,229	13,555	3,942
Caddo	237,848	103,457	119,304	4,034	3,840	7,213	182,407	85,059	86,359	3,008	2,958	5,023	131,942	64,381	61,471	6,090
Claiborne	14,170	7,263	6,360	88	185	274	11,507	6,258	4,824	55	140	230	8,390	4,557	3,677	156
De Soto	26,812	15,284	9,973	117	740	698	20,440	11,909	7,425	86	557	463	17,887	11,005	6,317	565
Grant	22,169	17,709	3,335	133	644	348	17,527	13,964	2,717	97	507	242	12,226	10,764	1,120	342
Jackson	15,031	9,967	4,166	175	255	468	11,783	7,967	3,125	140	174	377	9,375	6,570	2,610	195
Lincoln	48,396	26,034	19,364	892	662	1,444	38,655	21,306	15,119	744	526	960	24,408	15,139	8,357	912
Natchitoches	37,515	19,361	15,725	255	861	1,313	29,349	16,010	11,415	198	683	1,043	20,675	11,761	8,016	898
*Ouachita	107,363	60,969	39,063	1,387	1,918	4,026	80,129	47,833	26,804	1,030	1,495	2,967	63,490	39,541	21,836	2,113
Red River	7,620	4,195	3,106	25	171	123	5,714	3,338	2,164	3	116	93	5,475	3,034	2,358	83
Sabine	22,155	15,036	3,861	94	2,723	441	17,064	12,054	2,655	66	1,970	319	13,570	10,287	1,912	1,371
Union	21,107	14,460	5,224	62	338	1,023	16,632	11,807	3,861	39	254	671	14,802	10,847	3,497	458
Webster	36,967	22,735	12,679	208	687	658	28,753	18,144	9,464	154	558	433	21,259	14,068	6,744	447
Winn	13,755	8,594	3,727	210	263	961	10,906	6,932	2,695	170	207	902	8,262	5,916	2,218	128
District 5	752,635	413,066	284,038	11,229	16,767	27,535	576,815	330,998	205,351	8,268	12,784	19,414	425,823	260,608	147,416	17,799
	100.000%	54.883%	37.739%	1.492%	2.228%	3.658%	100.000%	57.384%	35.601%	1.433%	2.216%	3.366%	73.823%	61.201%	34.619%	4.180%
District 6																
Acadia	57,576	44,480	10,864	238	573	1,421	42,943	34,071	7,383	173	400	916	36,151	29,438	5,995	718
Allen	22,750	16,327	4,490	246	947	740	17,510	12,751	3,275	182	646	656	11,079	8,704	1,920	455
Beauregard	36,549	29,529	4,649	402	1,052	917	27,489	22,304	3,495	269	773	648	22,071	18,639	2,264	1,168
Calcasieu	216,785	139,772	59,386	4,702	3,536	9,389	163,166	108,789	41,898	3,359	2,604	6,516	111,819	80,364	26,493	4,962
Cameron	5,617	5,232	125	30	75	155	4,358	4,100	79	23	47	109	4,072	3,936	61	75

Splits

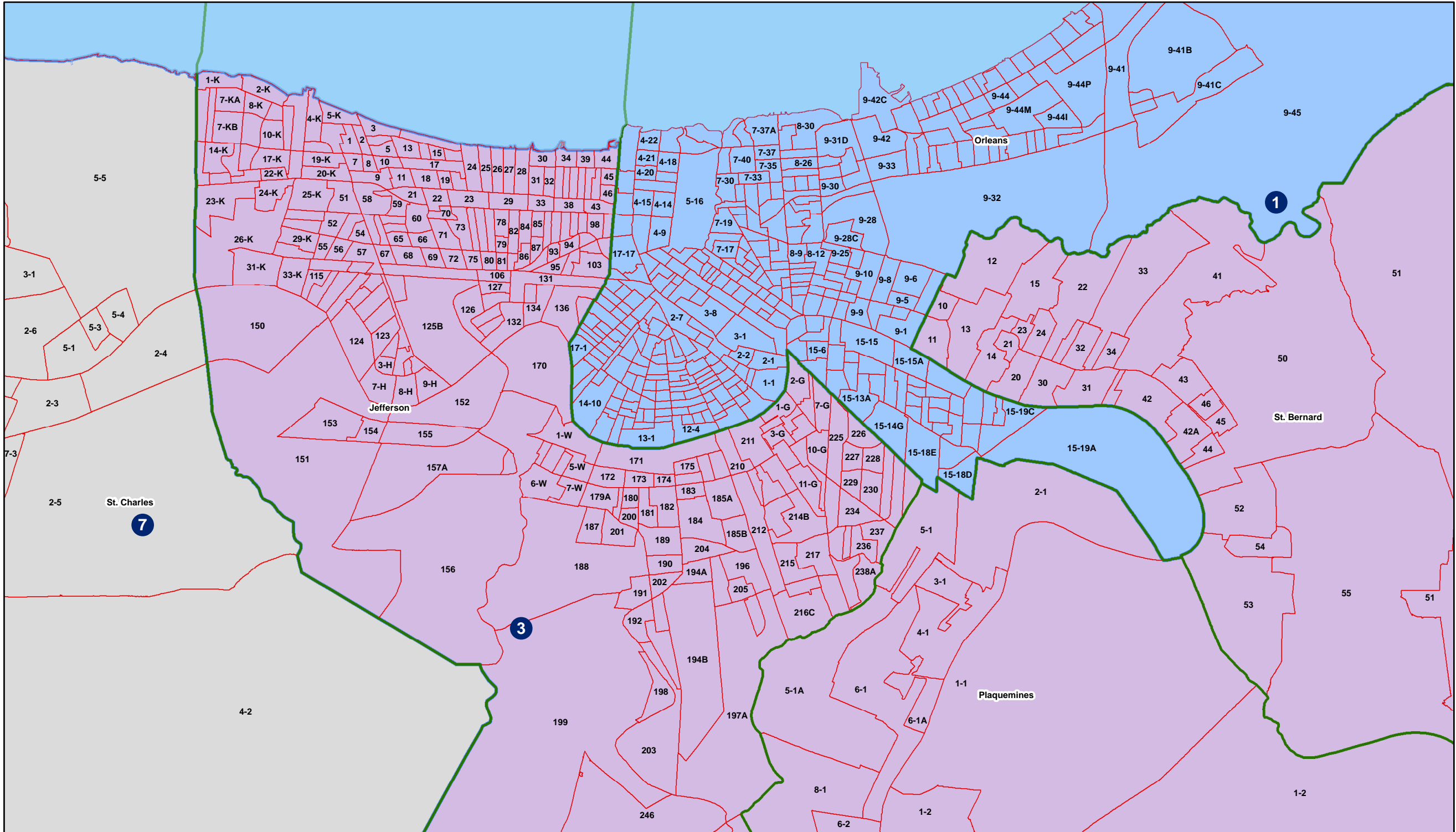
Plan: Senate Bill 381 Engrossed (Miller)

	Total Population	Total White	Total Black	Total Asian	Total American Indian	Total Other	VAP Total	VAP White	VAP Black	VAP Asian	VAP American Indian	VAP Other	Reg Total Dec 2023	Reg White Dec 2023	Reg Black Dec 2023	Reg Other Dec 2023
District 6																
Evangeline	32,350	21,354	9,235	241	280	1,240	24,408	16,460	6,483	187	217	1,061	20,388	14,274	5,744	370
Jefferson Davis	32,250	25,066	5,837	183	472	692	24,039	19,121	4,006	111	325	476	18,733	15,509	2,784	440
*Lafayette	48,980	33,131	9,831	1,509	724	3,785	36,577	25,848	6,574	1,088	549	2,518	29,161	22,433	5,009	1,719
Rapides	130,023	77,510	42,592	2,428	3,102	4,391	98,792	61,373	30,205	1,786	2,334	3,094	75,286	49,956	21,959	3,371
St. Landry	82,540	43,611	35,836	499	636	1,958	61,811	34,209	25,497	353	451	1,301	52,429	28,933	22,135	1,361
Vermilion	57,359	44,477	8,810	1,447	623	2,002	43,012	34,363	5,787	1,037	488	1,337	35,511	29,693	4,555	1,263
Vernon	48,750	35,087	7,611	1,442	1,600	3,010	36,261	26,765	5,133	1,074	1,160	2,129	22,409	18,129	2,608	1,672
District 6	771,529	515,576	199,266	13,367	13,620	29,700	580,366	400,154	139,815	9,642	9,994	20,761	439,109	320,008	101,527	17,574
	100.000%	66.825%	25.827%	1.733%	1.765%	3.849%	100.000%	68.949%	24.091%	1.661%	1.722%	3.577%	75.661%	72.877%	23.121%	4.002%
District 7																
Ascension	126,500	81,141	32,216	2,300	2,004	8,839	91,957	61,136	22,139	1,514	1,390	5,778	78,646	55,542	18,828	4,276
Assumption	21,039	13,722	6,220	96	258	743	16,616	11,145	4,707	57	197	510	13,323	8,977	4,131	215
Iberia	69,929	39,206	24,556	2,123	794	3,250	52,791	31,295	17,069	1,562	581	2,284	42,188	26,848	13,441	1,899
*Lafayette	192,773	120,232	55,305	4,945	2,486	9,805	147,298	95,760	39,343	3,576	1,838	6,781	119,648	83,365	29,736	6,547
Lafourche	97,557	71,710	15,855	1,025	4,224	4,743	74,619	56,838	11,077	738	2,777	3,189	54,238	45,481	6,277	2,480
*St. Charles	52,549	33,550	13,928	837	925	3,309	39,541	26,154	9,890	529	667	2,301	33,582	23,411	8,270	1,901
St. Martin	51,767	33,259	15,921	597	539	1,451	39,404	26,278	11,293	407	413	1,013	33,997	23,306	9,880	811
St. Mary	49,406	26,949	15,991	835	1,670	3,961	37,521	21,594	11,520	593	1,173	2,641	29,204	17,999	9,570	1,635
Terrebonne	109,580	69,934	23,147	1,743	8,637	6,119	82,505	55,631	15,796	1,239	5,750	4,089	55,810	41,601	9,910	4,299
District 7	771,100	489,703	203,139	14,501	21,537	42,220	582,252	385,831	142,834	10,215	14,786	28,586	460,636	326,530	110,043	24,063
	100.000%	63.507%	26.344%	1.881%	2.793%	5.475%	100.000%	66.265%	24.531%	1.754%	2.539%	4.910%	79.113%	70.887%	23.889%	5.224%

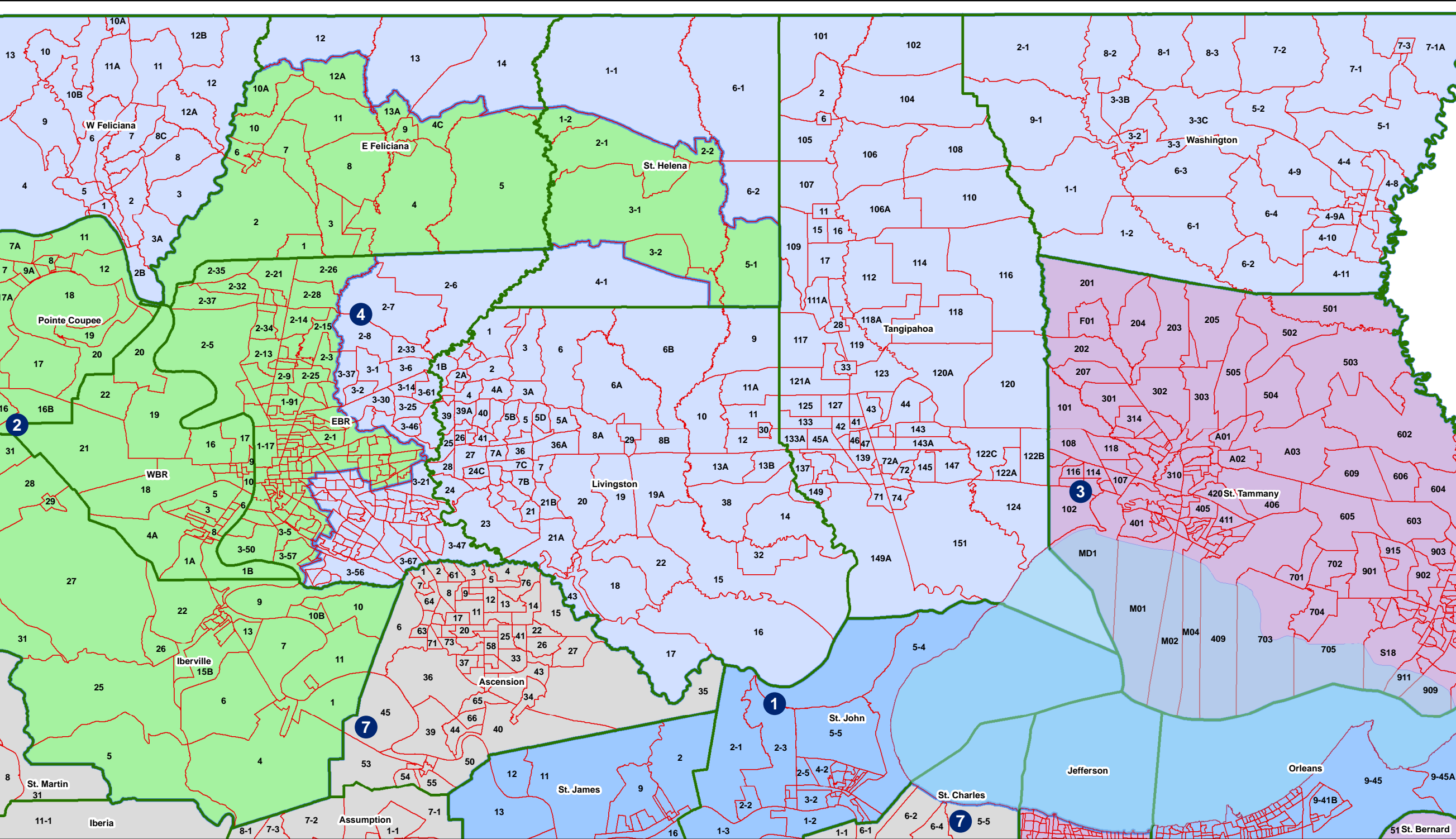
Supreme Court (7) - Statewide



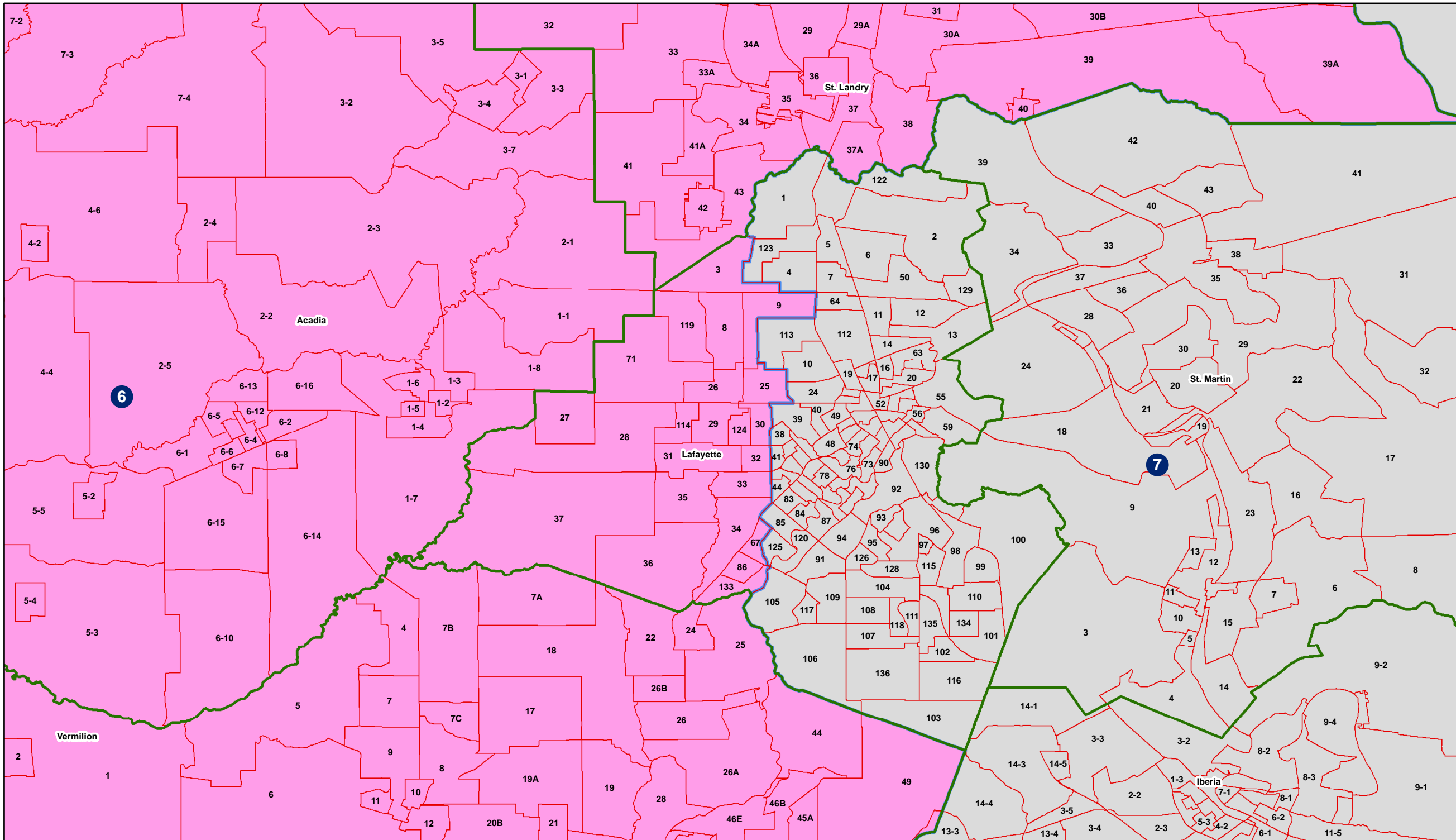
Supreme Court (7) - Jefferson-Orleans



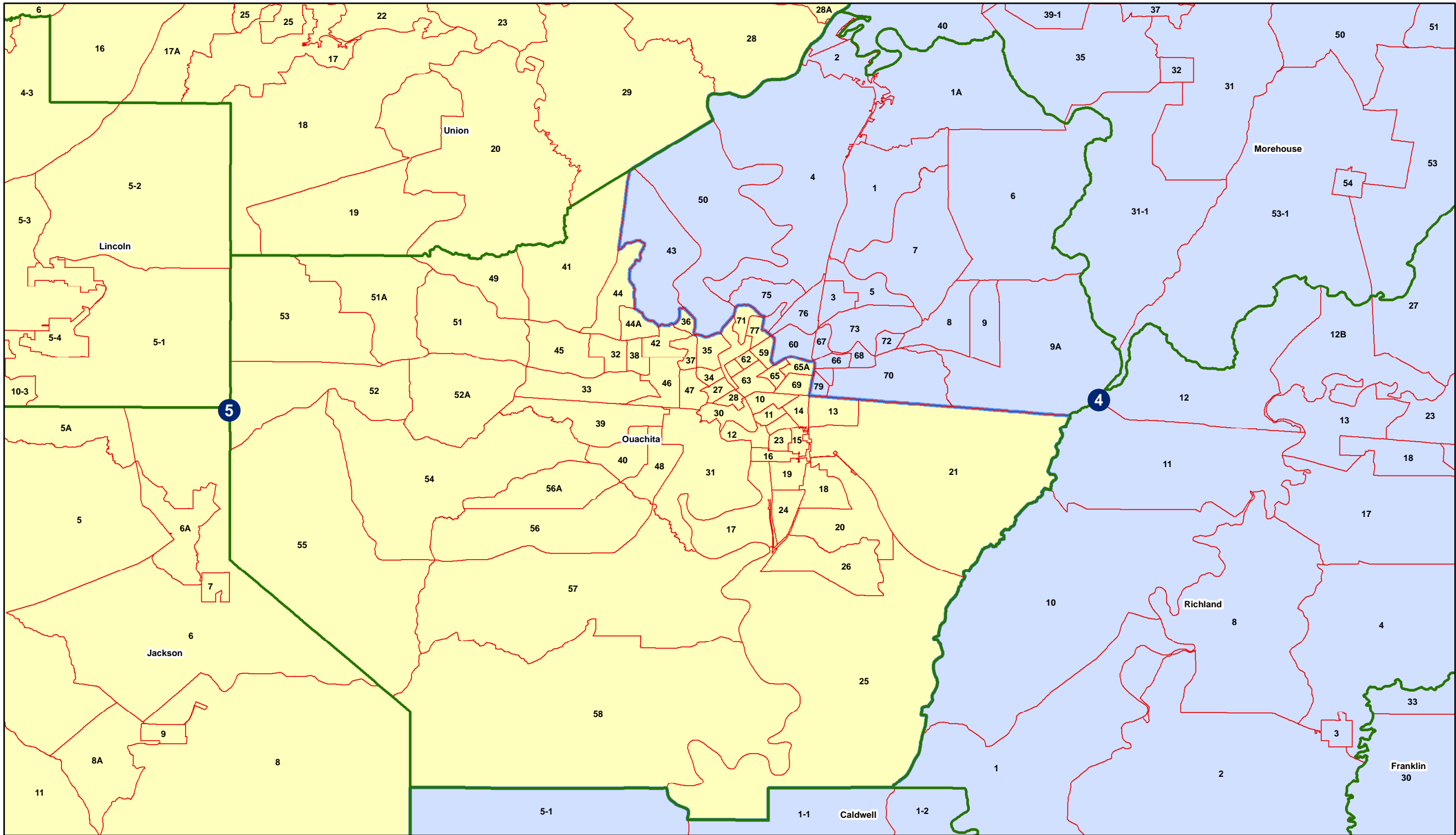
Supreme Court (7) - Florida Parishes



Supreme Court (7) - Lafayette



Supreme Court (7) - Ouachita



Supreme Court (7) - EBR

