

<b>FOR OFFICE USE ONLY</b>	

**HOUSE FLOOR AMENDMENTS**

2022 First Extraordinary Session

Amendments proposed by Representative Gaines to Engrossed House Bill No. 1 by Representative Schexnayder

1 AMENDMENT NO. 1

2 On page 1, delete lines 13 through 19 and delete pages 2 through 4 and on page 5, delete  
3 lines 1 through 27 and insert the following:

4 "(1) District 1 is composed of Precincts 1-1, 1-3, 2-1, 3-1, 3-2, 4-1, 4-2, 4-3,  
5 4-4, 5-4, 6-1, 6-3, 6-5, 7-1, 7-2, 7-4, 7-5, 8-2, 8-3, 9-1, 9-2, 9-4, 9-5, 10-1, 10-2, 10-3,  
6 10-4, 11-2, 12-1, and 12-3 of Iberia Parish; Precincts 4, 5, 6, 13, 15B, 24, and 25 of  
7 Iberville Parish; Precincts 1, 2, 3, 4, 5, 7, 8, 9, 10, 11, 12, 13, 14, 15, 16, 17, 18, 19,  
8 20, 21, 22, 23, 24, 25, 26, 27, 28, 29, 30, 31, 32, 33, 34, 35, 36, 37, 38, 39, 40, 41, 42,  
9 43, 44, 45, 46, 51, 52, 53, 54, 55, 56, 57, 58, 59, 60, 61, 62, 63, 64, 65, 66, 67, 68, 69,  
10 70, 71, 72, 73, 74, 75, 76, 77, 78, 79, 80, 81, 82, 83, 84, 85, 86, 87, 88, 89, 90, 91, 92,  
11 93, 94, 95, 96, 97, 98, 99, 100, 101, 102, 103, 105, 106, 117, 118, 119, 120, 121, 122,  
12 123, 124, 125A, 125B, 126, 127, 128, 129, 130, 132, 134, 136, 138, 246, 247, 248,  
13 1-GI, 1-H, 2-H, 3-H, 4-H, 5-H, 6-H, 7-H, 8-H, 9-H, 1-K, 2-K, 3-K, 4-K, 5-K, 6-KA,  
14 6-KB, 7-KA, 7-KB, 8-K, 9-K, 10-K, 11-K, 12-K, 13-KA, 13-KB, 14-K, 15-K, 16-K,  
15 17-K, 18-K, 19-K, 20-K, 25-K, 27-K, 28-K, 34-K, 35-K, and 1-L of Jefferson Parish;  
16 Lafourche Parish; Precincts 3-14, 3-19, 3-20, 4-7, 4-8, 4-9, 4-11, 4-14, 4-15, 4-17,  
17 4-17A, 4-18, 4-20, 4-21, 4-22, 4-23, 5-11, 5-12, 5-13, 5-15, 5-16, 5-17, 5-18, 6-8,  
18 6-9, 9-45, 9-45A, 13-1, 13-2, 13-3, 13-4, 13-5, 13-6, 13-7, 13-8, 13-9, 13-10, 13-11,  
19 13-12, 13-13, 13-14, 13-15, 13-16, 14-1, 14-2, 14-3, 14-4, 14-5, 14-6, 14-7, 14-8,  
20 14-9, 14-10, 14-11, 14-12, 14-13A, 14-14, 14-15, 14-16, 14-17, 14-18A, 14-19,  
21 14-20, 14-21, 16-1, 16-1A, 16-2, 16-3, 16-4, 16-5, 16-6, 16-7, 16-8, 17-1, 17-2,  
22 17-17, 17-18, 17-18A, 17-19, and 17-20 of Orleans Parish; Plaquemines Parish; St.  
23 Bernard Parish; Precincts 1 and 2 of St. Martin Parish; St. Mary Parish; Precincts  
24 705, 706, 802, 803, 805, 806, 809, 811, 813, 814, 815, 816, 818, 904, 905, 906, 907,  
25 909, 910, 911, 912, 914, 917, 918, 921, 922, S01, S02, S03, S04, S05, S06, S07, S08,  
26 S09, S10, S11, S13, S15, S16, S17, S18, S19, S20, S21, S22, S23, S24, and S25 of  
27 St. Tammany Parish; and Terrebonne Parish.

28 (2) District 2 is composed of Precincts 6, 28, 30, 36, 37, 39, 40, 44, 45, 47,  
29 48, 50, 51, 52, 53, 54, 55, 57, 63, 65, and 66 of Ascension Parish; Assumption  
30 Parish; Precincts 1-1, 1-3, 1-4, 1-5, 1-6, 1-10, 1-13, 1-15, 1-16, 1-32, 1-37, 1-38,  
31 1-45, 1-46, 1-51, 1-57, 1-67, 1-68, 1-76, 1-102, 1-107, 3-5, 3-20, 3-23, 3-44, 3-50,  
32 3-55, 3-56, 3-57, 3-63, 3-65, 3-69, and 3-70 of East Baton Rouge Parish; Precincts  
33 1, 3, 7, 9, 10, 11, 12, 13C, 14, 14A, 15, 16, 17, 18, 19, 20, 21, 22, 23, and 26 of  
34 Iberville Parish; Precincts 104, 108, 115, 116, 131, 133, 150, 151, 152, 153, 154,  
35 155, 156, 157A, 157B, 170, 171, 172, 173, 174, 175, 176, 177, 178, 179A, 179B,  
36 180, 181, 182, 183, 184, 185A, 185B, 187, 188, 189, 190, 191, 192, 193A, 193B,  
37 194A, 194B, 195, 196, 197A, 197B, 198, 199, 200, 201, 202, 203, 204, 205, 210,  
38 211, 212, 213A, 213B, 213C, 214A, 214B, 215, 216A, 216B, 216C, 217, 225, 226,  
39 227, 228, 229, 230, 231, 232A, 232B, 234, 235, 236, 237, 238A, 238B, 1-G, 2-G,  
40 3-G, 4-G, 5-G, 6-G, 7-G, 8-G, 9-G, 10-G, 11-G, 12-G, 13-G, 21-K, 22-K, 23-K,  
41 24-K, 26-K, 29-K, 30-K, 31-K, 33-K, 1-W, 2-W, 3-W, 4-W, 5-W, 6-W, and 7-W of  
42 Jefferson Parish; Precincts 1-1, 1-2, 1-5, 1-6, 2-1, 2-2, 2-4, 2-6, 2-7, 3-1, 3-8, 3-9,  
43 3-12, 3-15, 3-18, 4-2, 4-3, 4-5, 4-6, 5-1, 5-2, 5-3, 5-5, 5-7, 5-8, 5-9, 5-10, 6-1, 6-2,  
44 6-4, 6-6, 6-7, 7-1, 7-2, 7-4, 7-5, 7-6, 7-7, 7-8, 7-9A, 7-10, 7-11, 7-12, 7-13, 7-14,  
45 7-15, 7-16, 7-17, 7-18, 7-19, 7-20, 7-21, 7-23, 7-24, 7-25, 7-25A, 7-26, 7-27, 7-27B,

1 7-28, 7-28A, 7-29, 7-30, 7-32, 7-33, 7-35, 7-37, 7-37A, 7-40, 7-41, 7-42, 8-1, 8-2,  
 2 8-4, 8-6, 8-7, 8-8, 8-9, 8-12, 8-13, 8-14, 8-15, 8-19, 8-20, 8-21, 8-22, 8-23, 8-24,  
 3 8-25, 8-26, 8-27, 8-28, 8-30, 9-1, 9-3, 9-4, 9-5, 9-6, 9-7, 9-8, 9-9, 9-10, 9-11, 9-12,  
 4 9-13, 9-14, 9-15, 9-16, 9-17, 9-19, 9-21, 9-23, 9-25, 9-26, 9-28, 9-28C, 9-29, 9-30,  
 5 9-30A, 9-31, 9-31A, 9-31B, 9-31D, 9-32, 9-33, 9-34A, 9-35, 9-35A, 9-36, 9-36B,  
 6 9-37, 9-38, 9-38A, 9-39, 9-39B, 9-40, 9-40A, 9-40C, 9-41, 9-41A, 9-41B, 9-41C,  
 7 9-41D, 9-42, 9-42C, 9-43A, 9-43B, 9-43C, 9-43E, 9-43F, 9-43G, 9-43H, 9-43I,  
 8 9-43J, 9-43K, 9-43L, 9-43M, 9-43N, 9-44, 9-44A, 9-44B, 9-44D, 9-44E, 9-44F,  
 9 9-44G, 9-44I, 9-44J, 9-44L, 9-44M, 9-44N, 9-44O, 9-44P, 9-44Q, 10-3, 10-6, 10-7,  
 10 10-8, 10-9, 10-11, 10-12, 10-13, 10-14, 11-2, 11-3, 11-4, 11-5, 11-8, 11-9, 11-10,  
 11 11-11, 11-12, 11-13, 11-14, 11-17, 12-1, 12-2, 12-3, 12-4, 12-5, 12-6, 12-7, 12-8,  
 12 12-9, 12-10, 12-11, 12-12, 12-13, 12-14, 12-16, 12-17, 12-19, 14-23, 14-24A, 14-25,  
 13 14-26, 15-1, 15-2, 15-3, 15-5, 15-6, 15-8, 15-9, 15-10, 15-11, 15-12, 15-12A, 15-13,  
 14 15-13A, 15-13B, 15-14, 15-14A, 15-14B, 15-14C, 15-14D, 15-14E, 15-14F, 15-14G,  
 15 15-15, 15-15A, 15-15B, 15-16, 15-17, 15-17A, 15-17B, 15-18, 15-18A, 15-18B,  
 16 15-18C, 15-18D, 15-18E, 15-18F, 15-19, 15-19A, 15-19B, 15-19C, 16-9, 17-3, 17-4,  
 17 17-5, 17-6, 17-7, 17-8, 17-9, 17-10, 17-11, 17-12, 17-13, 17-13A, 17-14, 17-15, and  
 18 17-16 of Orleans Parish; St. Charles Parish; St. James Parish; and St. John the  
 19 Baptist Parish.

20 (3) District 3 is composed of Acadia Parish; Allen Parish; Beauregard Parish;  
 21 Calcasieu Parish; Cameron Parish; Precincts 1020, 1030, 1040, 1041, 1050, 1060,  
 22 1130, 1140, 1161, 1171, 2010, 2010A, 2020, 2030, 2040, 3010, 3020, 3030, 3031,  
 23 3032, 3040, 3050, 3051, 3052, 3060, 3070, 3071, 4001, 4010, 4011, 4012, 4020,  
 24 4021, 4030, 4040, 5004, 5010, 5020, 5030, 5040, 5041, and 5050 of Evangeline  
 25 Parish; Precincts 2-3, 3-3, 10-7, 13-1, 13-3, 14-1, and 14-3 of Iberia Parish; Jefferson  
 26 Davis Parish; Precincts 3, 25, 26, 27, 28, 29, 30, 31, 32, 33, 34, 35, 36, 37, 38, 39,  
 27 40, 41, 42, 43, 44, 45, 46, 47, 48, 49, 65, 66, 67, 69, 70, 71, 72, 73, 74, 75, 76, 77, 78,  
 28 79, 80, 81, 82, 83, 84, 85, 86, 87, 88, 89, 90, 91, 92, 93, 94, 95, 96, 97, 98, 99, 100,  
 29 101, 102, 103, 104, 105, 106, 107, 108, 109, 110, 111, 114, 115, 116, 117, 118, 119,  
 30 120, 121, 124, 125, 126, 127, and 128 of Lafayette Parish; Precincts C22, C23, C31,  
 31 C32, C33, C34, C35, C36, C37-A, C37-B, C41, C42, N6, N7, N11, N12, N13-A,  
 32 N13-B, N14-A, N14-B, N15, N16, N17, N18-A, N18-B, N19, N20, N21, N22, N23,  
 33 N24, N25, N26, S1, S2, S4, S5, S6A, S6B, S7, S8, S9, S10, S11, S13, S14, S21, S22,  
 34 S23, S24, S25, S26, S27, S28, and S29 of Rapides Parish; Precincts 3, 4, 5, 6, 7, 8,  
 35 9, 10, 11, 12, 13, 14, 15, 16, 19, 20, 21, 22, 24, and 25 of St. Martin Parish;  
 36 Vermilion Parish; and Precincts 1-1, 1-1B, 1-2A, 1-4, 1-4A, 1-5, 1-6A, 1-7, 1-7A,  
 37 1-7B, 1-8, 1-8A, 1-8C, 1-8E, 1-8F, 1-9, 4-1, 4-2, 4-3, 4-3A, 4-3C, 4-3E, 4-3F, 4-3G,  
 38 4-3J, 4-3K, 4-3L, 4-3M, 4-3N, 5-1, 5-1A, 5-2, 5-2A, 6-1, 6-2, 6-3, 6-4, 7-1, 7-2A,  
 39 7-3, 7-4, 7-4A, 7-5, 7-5A, 7-5C, 8-1, 8-2, and 8-3 of Vernon Parish.

40 (4) District 4 is composed of Bienville Parish; Bossier Parish; Caddo Parish;  
 41 Caldwell Parish; Claiborne Parish; De Soto Parish; Grant Parish; Jackson Parish; La  
 42 Salle Parish; Lincoln Parish; Natchitoches Parish; Precincts 1, 1A, 2, 4, 6, 7, 25, 31,  
 43 32, 33, 34, 35, 36, 37, 38, 39, 40, 41, 42, 43, 44, 44A, 45, 46, 48, 49, 50, 51, 51A, 52,  
 44 52A, 53, 54, 55, 56, 56A, 57, 58, 61, 64, 71, 75, 76, 77, and 78 of Ouachita Parish;  
 45 Red River Parish; Sabine Parish; Union Parish; Precincts 1-2, 1-3, 1-3B, 1-3C, 1-3D,  
 46 1-4B, 1-4C, 1-4D, 1-5A, 1-6, 1-6B, 2-1, 2-1A, 2-2, 2-2A, 2-3, 2-3A, 2-4, 2-4E, 3-1,  
 47 3-2, 3-3, 3-4, 3-5, and 7-2 of Vernon Parish; Webster Parish; and Winn Parish.

48 (5) District 5 is composed of Avoyelles Parish; Catahoula Parish; Concordia  
 49 Parish; Precincts 1-2, 1-11, 1-14, 1-17, 1-18, 1-19, 1-20, 1-21, 1-22, 1-23, 1-24, 1-25,  
 50 1-26, 1-27, 1-28, 1-29, 1-30, 1-31, 1-33, 1-36, 1-50, 1-54, 1-55, 1-58, 1-60, 1-61,  
 51 1-62, 1-63, 1-70, 1-71, 1-74, 1-77, 1-78, 1-81, 1-82, 1-83, 1-84, 1-85, 1-86, 1-87,  
 52 1-88, 1-91, 1-92, 1-93, 1-94, 1-95, 1-97, 1-100, 1-101, 1-104, 2-1, 2-2, 2-3, 2-4, 2-5,  
 53 2-6, 2-7, 2-9, 2-10, 2-11, 2-12, 2-13, 2-14, 2-15, 2-16, 2-17, 2-18, 2-19, 2-20, 2-21,  
 54 2-22, 2-23, 2-24, 2-25, 2-26, 2-27, 2-28, 2-29, 2-30, 2-31, 2-32, 2-33, 2-34, 2-35,  
 55 2-36, 2-37, 3-8, 3-12, 3-24, 3-28, 3-32, 3-54, 3-58, and 3-72 of East Baton Rouge  
 56 Parish; East Carroll Parish; East Feliciana Parish; Precincts 1010, 1031, 1080, 1081,  
 57 1090, 1091, 1100, 1101, 1110, 1120, 1150, 1160, 1162, and 1170 of Evangeline  
 58 Parish; Franklin Parish; Precincts 27, 28, 29, 31, and 32 of Iberville Parish; Precincts  
 59 1, 2, 4, 5, 6, 7, 8, 9, 10, 11, 12, 13, 14, 15, 16, 17, 18, 19, 20, 21, 22, 23, 24, 51, 52,

1 53, 54, 55, 56, 57, 58, 59, 60, 61, 62, 63, 64, 68, 112, 113, 122, and 123 of Lafayette  
 2 Parish; Madison Parish; Morehouse Parish; Precincts 3, 5, 8, 9, 9A, 10, 11, 12, 13,  
 3 14, 15, 16, 17, 18, 19, 20, 21, 22, 23, 24, 26, 27, 27A, 28, 29, 30, 47, 59, 60, 62, 63,  
 4 65, 65A, 66, 67, 68, 69, 70, 72, 73, 74, and 79 of Ouachita Parish; Pointe Coupee  
 5 Parish; Precincts C1, C2, C3, C4, C5, C6, C7, C8, C9, C10, C11-A, C11-B, C13,  
 6 C14, C15, C17, C18, C19, C20, C21, C24, C25, C26, C27, C28, C30, C38-A, C38-B,  
 7 C39, C40, N1, N2, N3, N4, N5, N8, N9, N10, N27, N28, N29, S15, S16, S17, S18,  
 8 S19, and S20 of Rapides Parish; Richland Parish; St. Helena Parish; St. Landry  
 9 Parish; Precincts 17, 18, 23, 26, 27, 28, and 29 of St. Martin Parish; Precincts 1, 2,  
 10 6, 11, 15, 16, 17, 18, 26, 101, 102, 104, 105, 106, 106A, 107, 109, 111A, and 115B  
 11 of Tangipahoa Parish; Tensas Parish; West Baton Rouge Parish; West Carroll Parish;  
 12 and West Feliciana Parish.

13 (6) District 6 is composed of Precincts 1, 2, 3, 4, 5, 7, 8, 9, 10, 11, 12, 13, 14,  
 14 15, 16, 17, 18, 20, 21, 22, 23, 24, 25, 26, 27, 31, 32, 33, 34, 35, 41, 42, 43, 58, 61, 62,  
 15 64, 71, 72, 73, 76, 77, and 78 of Ascension Parish; Precincts 1-7, 1-8, 1-9, 1-12,  
 16 1-34, 1-35, 1-39, 1-40, 1-41, 1-42, 1-43, 1-44, 1-47, 1-48, 1-49, 1-52, 1-53, 1-56,  
 17 1-59, 1-64, 1-65, 1-66, 1-69, 1-72, 1-73, 1-75, 1-79, 1-80, 1-89, 1-90, 1-98, 1-99,  
 18 1-103, 1-105, 2-8, 3-1, 3-2, 3-3, 3-4, 3-6, 3-7, 3-9, 3-10, 3-11, 3-13, 3-14, 3-15, 3-16,  
 19 3-17, 3-18, 3-19, 3-21, 3-22, 3-25, 3-26, 3-27, 3-29, 3-30, 3-31, 3-33, 3-34, 3-35,  
 20 3-36, 3-37, 3-38, 3-39, 3-40, 3-41, 3-43, 3-45, 3-46, 3-47, 3-48, 3-49, 3-51, 3-52,  
 21 3-53, 3-59, 3-60, 3-61, 3-62, 3-64, 3-66, 3-67, 3-68, and 3-71 of East Baton Rouge  
 22 Parish; Livingston Parish; Precincts 101, 102, 103, 104, 105, 106, 107, 108, 110,  
 23 111, 112, 113, 114, 115, 116, 118, 201, 202, 203, 204, 205, 206, 207, 301, 302, 303,  
 24 304, 305, 306, 307, 308, 309, 310, 312, 313, 314, 401, 402, 403, 404, 405, 406, 407,  
 25 408, 409, 410, 411, 412, 413, 414, 415, 416, 417, 418, 419, 420, 421, 422, 426, 427,  
 26 429, 430, 501, 502, 503, 504, 505, 601, 602, 603, 604, 605, 606, 609, 701, 702, 703,  
 27 704, 801, 804, 807, 808, 810, 812, 817, 901, 902, 903, 913, 915, 916, A01, A02,  
 28 A03, A04, C01, C02, C03, C04, C05, C06, C07, C08, C09, C10, C11, F01, M01,  
 29 M02, M03, M04, M05, M06, M07, M08, M09, M10, M11, M12, MD1, and P01 of  
 30 St. Tammany Parish; Precincts 27, 28, 33, 40, 40A, 41, 42, 42A, 43, 44, 45, 45A, 46,  
 31 47, 48, 49, 70, 70A, 71, 72, 72A, 73, 74, 104A, 108, 110, 112, 114, 116, 117, 118,  
 32 119, 120, 120A, 120B, 121, 121A, 122, 122A, 122B, 123, 124, 124A, 125, 127,  
 33 127A, 129, 129A, 133, 133A, 137, 137A, 137B, 137C, 137D, 139, 141, 141A, 143,  
 34 143A, 145, 147, 149, 149A, and 151 of Tangipahoa Parish; and Washington Parish."

# Plan Statistics

Plan: HFAHB1-4144-88

<u>Districts:</u>	<u># of Members</u>	<u>Actual Population</u>	<u>Ideal Population</u>	<u>Absolute Deviation</u>	<u>Relative Deviation</u>
District 1	1	776,288	776,292	-4	-0.001%
District 2	1	776,324	776,292	32	0.004%
District 3	1	776,280	776,292	-12	-0.002%
District 4	1	776,280	776,292	-12	-0.002%
District 5	1	776,292	776,292	0	0.000%
District 6	1	776,293	776,292	1	0.000%
<b>Grand Total:</b>	<b>6</b>	<b>4,657,757</b>	<b>4,657,752</b>		

Ideal Population Per Member: 776292  
 Number of Districts for Plan Type: 6  
 Range of District Populations: 776,280 to 776,324  
 Absolute Mean Deviation: 7  
 Absolute Range: -12 to 32  
 Absolute Overall Range: 44  
 Relative Mean Deviation: 0.00%  
 Relative Range: 0.00% to 0.00%  
 Relative Overall Range: 0.00%

<b><i>Ideal - Actual:</i></b>	<b>-5</b>
<b><i>Remainder:</i></b>	<b>5</b>
<b><i>Unassigned Population:</i></b>	<b>0</b>

# District Summary

DB: LA 2020 12 - CENSUS

Plan: HFAHB1-4144-88

Plan Type: Congress

Page: 1 of 3

	Total Population	Total White	Total Black	Total Asian	Total Other	Total Hispanic	VAP Total	VAP White	VAP Black	VAP Hispanic Total	Reg Total Dec 2021	Reg White Dec 2021	Reg Black Dec 2021	Reg Other Dec 2021	Reg Dem Total Dec 2021	Reg Rep Total Dec 2021	Reg Other Total Dec 2021
<b>District 1</b>																	
Iberia	57,438	30,708	22,346	1,378	2,385	2,903	43,334	24,663	15,495	1,991	36,711	22,062	13,245	1,404	14,766	12,646	9,299
Iberville	5,187	4,047	886	14	165	225	4,242	3,389	639	173	3,691	3,004	625	62	1,732	1,180	779
Jefferson	237,070	152,179	30,464	11,551	38,604	48,279	189,699	127,396	22,277	34,517	144,781	113,529	12,362	18,890	40,626	60,581	43,574
Lafourche	97,557	71,710	15,855	1,025	4,743	5,672	74,619	56,838	11,077	3,743	58,278	48,467	7,164	2,647	18,929	23,241	16,108
Orleans	75,419	57,649	8,578	2,968	5,320	8,414	62,878	48,491	7,224	6,962	52,991	42,036	5,323	5,632	23,970	12,641	16,380
Plaquemines	23,515	14,287	5,428	1,317	1,786	2,236	17,334	10,856	3,857	1,377	13,908	9,513	3,134	1,261	5,086	5,062	3,760
St. Bernard	43,764	24,497	12,309	1,381	4,630	6,010	31,775	18,992	7,944	4,028	25,653	18,233	5,497	1,923	10,335	6,620	8,698
St. Martin	1,368	1,285	13	7	29	44	1,154	1,091	11	31	993	979	1	13	270	471	252
St. Mary	49,406	26,949	15,991	835	3,961	4,524	37,521	21,594	11,520	2,954	30,210	18,712	9,891	1,607	11,875	9,939	8,396
St. Tammany	75,984	45,924	21,403	2,069	4,831	5,899	58,174	37,082	14,728	4,113	48,563	32,954	11,893	3,716	15,296	18,132	15,135
Terrebonne	109,580	69,934	23,147	1,743	6,119	7,358	82,505	55,631	15,796	4,701	61,720	45,395	11,566	4,759	18,175	25,124	18,421
<b>District 1</b>	<b>776,288</b>	<b>499,169</b>	<b>156,420</b>	<b>24,288</b>	<b>72,573</b>	<b>91,564</b>	<b>603,235</b>	<b>406,023</b>	<b>110,568</b>	<b>64,590</b>	<b>477,499</b>	<b>354,884</b>	<b>80,701</b>	<b>41,914</b>	<b>161,060</b>	<b>175,637</b>	<b>140,802</b>
	100.000%	64.302%	20.150%	3.129%	9.349%	11.795%	100.000%	67.308%	18.329%	10.707%	79.156%	74.321%	16.901%	8.778%	33.730%	36.783%	29.487%
<b>District 2</b>																	
Ascension	31,421	12,385	16,571	392	1,737	2,142	22,966	9,654	11,663	1,398	20,186	8,798	10,484	904	10,528	5,075	4,583
Assumption	21,039	13,722	6,220	96	743	914	16,616	11,145	4,707	631	14,439	9,700	4,510	229	7,571	3,915	2,953
East Baton Rouge	74,856	30,448	34,091	4,145	5,394	6,831	61,018	26,761	26,401	4,930	37,991	15,727	19,341	2,923	19,544	7,819	10,628
Iberville	21,501	9,011	11,167	175	992	1,133	16,979	7,625	8,250	967	13,888	5,755	7,806	327	8,601	2,591	2,696
Jefferson	203,711	68,756	95,753	11,473	24,315	30,778	154,955	56,739	69,898	20,967	118,320	46,087	57,214	15,019	60,699	22,362	35,259
Orleans	308,578	68,813	210,391	9,888	16,724	22,603	243,318	61,761	158,844	16,194	203,253	49,950	136,202	17,101	141,320	12,521	49,412
St. Charles	52,549	33,550	13,928	837	3,309	4,141	39,541	26,154	9,890	2,737	34,985	24,309	8,797	1,879	12,561	13,121	9,303
St. James	20,192	9,973	9,762	60	315	343	15,505	7,883	7,297	237	14,966	7,254	7,501	211	9,435	3,083	2,448
St. John the Baptist	42,477	13,877	25,196	403	2,536	3,291	32,503	11,622	18,437	2,210	28,913	10,219	17,234	1,460	17,505	4,723	6,685
<b>District 2</b>	<b>776,324</b>	<b>260,535</b>	<b>423,079</b>	<b>27,469</b>	<b>56,065</b>	<b>72,176</b>	<b>603,401</b>	<b>219,344</b>	<b>315,387</b>	<b>50,271</b>	<b>486,941</b>	<b>177,799</b>	<b>269,089</b>	<b>40,053</b>	<b>287,764</b>	<b>75,210</b>	<b>123,967</b>
	100.000%	33.560%	54.498%	3.538%	7.222%	9.297%	100.000%	36.351%	52.268%	8.331%	80.699%	36.513%	55.261%	8.225%	59.096%	15.445%	25.458%
<b>District 3</b>																	
Acadia	57,576	44,480	10,864	238	1,421	1,641	42,943	34,071	7,383	1,026	37,678	30,555	6,407	716	13,474	15,248	8,956
Allen	22,750	16,327	4,490	246	740	1,893	17,510	12,751	3,275	1,755	12,201	9,478	2,217	506	4,781	4,617	2,803
Beauregard	36,549	29,529	4,649	402	917	1,271	27,489	22,304	3,495	828	22,294	18,771	2,369	1,154	5,346	10,341	6,607
Calcasieu	216,785	139,772	59,386	4,702	9,389	11,384	163,166	108,789	41,898	7,570	120,511	85,659	29,513	5,339	43,258	43,220	34,033
Cameron	5,617	5,232	125	30	155	197	4,358	4,100	79	130	4,789	4,610	88	91	1,402	2,112	1,275
Evangeline	23,988	18,552	3,854	176	1,164	1,222	18,192	14,131	2,726	1,037	15,120	12,680	2,170	270	5,728	6,208	3,184
Iberia	12,491	8,498	2,210	745	865	994	9,457	6,632	1,574	666	7,815	6,225	1,107	483	2,452	3,080	2,283
Jefferson Davis	32,250	25,066	5,837	183	692	734	24,039	19,121	4,006	489	20,013	16,350	3,202	461	6,839	7,644	5,530
Lafayette	172,780	127,426	26,466	5,888	10,407	12,253	132,143	100,507	18,155	8,487	110,118	90,904	12,679	6,535	26,398	52,042	31,678

# District Summary

DB: LA 2020 12 - CENSUS

Plan: HFAHB1-4144-88

Plan Type: Congress

Page: 2 of 3

	Total Population	Total White	Total Black	Total Asian	Total Other	Total Hispanic	VAP Total	VAP White	VAP Black	VAP Hispanic Total	Reg Total Dec 2021	Reg White Dec 2021	Reg Black Dec 2021	Reg Other Dec 2021	Reg Dem Total Dec 2021	Reg Rep Total Dec 2021	Reg Other Total Dec 2021
<b>District 3</b>																	
Rapides	69,584	54,292	8,596	1,655	2,875	3,332	53,146	42,439	5,966	2,130	44,131	37,503	4,522	2,106	11,107	21,415	11,609
St. Martin	35,420	23,009	10,468	511	1,086	1,227	27,027	18,195	7,452	823	24,054	16,620	6,831	603	9,860	8,516	5,678
Vermilion	57,359	44,477	8,810	1,447	2,002	2,296	43,012	34,363	5,787	1,496	36,769	30,505	4,994	1,270	12,725	14,227	9,817
Vernon	33,131	23,708	4,986	1,062	2,323	3,361	24,466	17,985	3,319	2,212	14,206	11,518	1,481	1,207	3,605	6,190	4,411
<b>District 3</b>	<b>776,280</b>	<b>560,368</b>	<b>150,741</b>	<b>17,285</b>	<b>34,036</b>	<b>41,805</b>	<b>586,948</b>	<b>435,388</b>	<b>105,115</b>	<b>28,649</b>	<b>469,699</b>	<b>371,378</b>	<b>77,580</b>	<b>20,741</b>	<b>146,975</b>	<b>194,860</b>	<b>127,864</b>
	100.000%	72.186%	19.418%	2.227%	4.385%	5.385%	100.000%	74.178%	17.909%	4.881%	80.024%	79.067%	16.517%	4.416%	31.291%	41.486%	27.223%
<b>District 4</b>																	
Bienville	12,981	6,950	5,600	57	167	211	10,073	5,486	4,284	141	8,847	4,843	3,917	87	4,296	2,877	1,674
Bossier	128,746	81,052	32,551	3,492	8,378	10,237	95,876	62,931	22,440	6,619	69,743	50,861	14,838	4,044	18,394	32,343	19,006
Caddo	237,848	103,457	119,304	4,034	7,213	8,381	182,407	85,059	86,359	5,618	151,296	73,113	71,249	6,934	71,214	42,680	37,402
Caldwell	9,645	7,646	1,632	51	166	221	7,478	5,969	1,224	163	6,031	5,124	818	89	1,805	2,800	1,426
Claiborne	14,170	7,263	6,360	88	274	479	11,507	6,258	4,824	403	8,598	4,632	3,820	146	3,725	2,923	1,950
De Soto	26,812	15,284	9,973	117	698	762	20,440	11,909	7,425	495	18,713	11,330	6,810	573	7,678	6,799	4,236
Grant	22,169	17,709	3,335	133	348	1,333	17,527	13,964	2,717	1,179	12,688	11,174	1,176	338	3,190	6,019	3,479
Jackson	15,031	9,967	4,166	175	468	468	11,783	7,967	3,125	372	9,449	6,647	2,610	192	3,473	3,985	1,991
La Salle	14,791	11,348	1,422	283	1,366	1,402	11,563	8,636	1,065	1,325	8,792	7,978	637	177	2,113	4,760	1,919
Lincoln	48,396	26,034	19,364	892	1,444	1,754	38,655	21,306	15,119	1,187	25,649	15,672	9,016	961	9,470	9,611	6,568
Natchitoches	37,515	19,361	15,725	255	1,313	1,490	29,349	16,010	11,415	1,140	23,107	12,850	9,224	1,033	10,281	6,981	5,845
Ouachita	90,953	72,958	11,272	1,451	3,171	3,297	68,844	56,386	7,617	2,122	58,372	50,859	5,489	2,024	11,528	31,717	15,127
Red River	7,620	4,195	3,106	25	123	188	5,714	3,338	2,164	113	5,631	3,130	2,418	83	2,788	1,775	1,068
Sabine	22,155	15,036	3,861	94	441	710	17,064	12,054	2,655	502	14,547	11,023	2,184	1,340	4,712	6,406	3,429
Union	21,107	14,460	5,224	62	1,023	1,135	16,632	11,807	3,861	709	15,221	11,066	3,692	463	5,073	6,714	3,434
Vernon	15,619	11,379	2,625	380	687	814	11,795	8,780	1,814	528	9,854	7,664	1,530	660	2,698	4,289	2,867
Webster	36,967	22,735	12,679	208	658	688	28,753	18,144	9,464	434	22,737	14,938	7,339	460	8,751	8,583	5,403
Winn	13,755	8,594	3,727	210	961	1,023	10,906	6,932	2,695	941	8,406	5,988	2,292	126	3,109	3,084	2,213
<b>District 4</b>	<b>776,280</b>	<b>455,428</b>	<b>261,926</b>	<b>12,007</b>	<b>28,899</b>	<b>34,593</b>	<b>596,366</b>	<b>362,936</b>	<b>190,267</b>	<b>23,991</b>	<b>477,681</b>	<b>308,892</b>	<b>149,059</b>	<b>19,730</b>	<b>174,298</b>	<b>184,346</b>	<b>119,037</b>
	100.000%	58.668%	33.741%	1.547%	3.723%	4.456%	100.000%	60.858%	31.904%	4.023%	80.099%	64.665%	31.205%	4.130%	36.488%	38.592%	24.920%
<b>District 5</b>																	
Avoyelles	39,693	25,625	11,678	434	1,189	1,485	30,578	20,269	8,311	1,257	23,426	16,534	6,294	598	10,883	7,042	5,501
Catahoula	8,906	5,776	2,395	46	570	614	6,951	4,557	1,736	558	6,467	4,639	1,770	58	2,693	2,416	1,358
Concordia	18,687	10,275	7,725	122	332	459	14,217	8,108	5,613	310	11,964	7,222	4,540	202	5,401	3,963	2,600
East Baton Rouge	189,802	38,147	137,810	3,876	8,608	9,933	141,430	31,332	100,209	6,769	116,660	27,414	84,165	5,081	74,465	15,914	26,281
East Carroll	7,459	2,054	5,272	29	61	115	5,901	1,773	4,043	80	4,709	1,306	3,359	44	3,096	769	844
East Feliciana	19,539	11,516	7,341	91	329	391	16,183	9,740	5,918	317	13,600	7,959	5,186	455	6,060	4,533	3,007
Evangeline	8,362	2,802	5,381	65	76	114	6,216	2,329	3,757	74	5,433	1,886	3,473	74	3,611	839	983

# District Summary

DB: LA 2020 12 - CENSUS

Plan: HFAHB1-4144-88

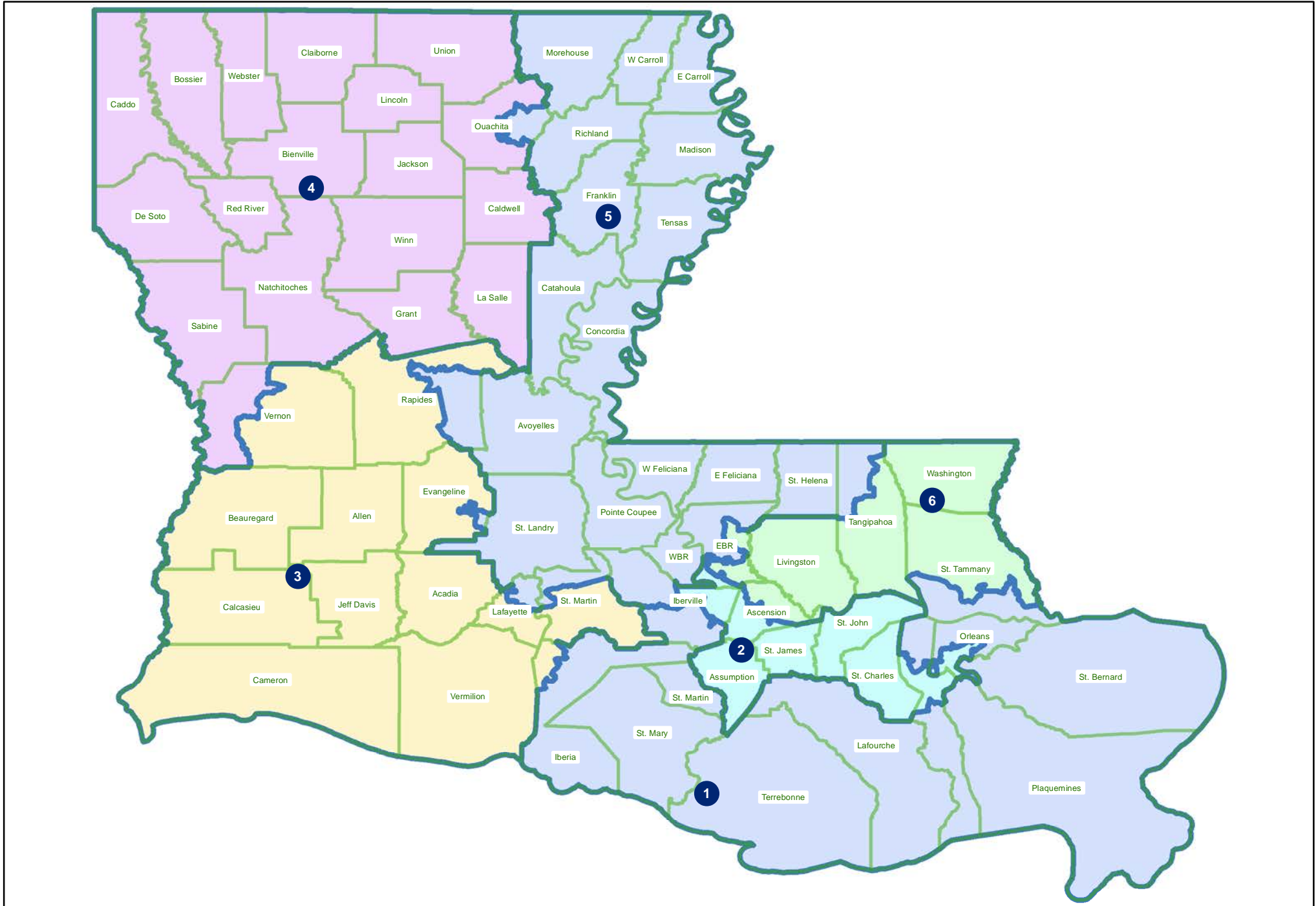
Plan Type: Congress

Page: 3 of 3

	Total Population	Total White	Total Black	Total Asian	Total Other	Total Hispanic	VAP Total	VAP White	VAP Black	VAP Hispanic Total	Reg Total Dec 2021	Reg White Dec 2021	Reg Black Dec 2021	Reg Other Dec 2021	Reg Dem Total Dec 2021	Reg Rep Total Dec 2021	Reg Other Total Dec 2021
District 5																	
Franklin	19,774	12,492	6,802	70	205	276	15,028	9,901	4,779	183	13,159	9,015	4,034	110	5,034	5,423	2,702
Iberville	3,553	1,775	1,677	13	45	60	2,865	1,448	1,343	47	2,883	1,373	1,466	44	1,791	590	502
Lafayette	68,973	25,937	38,670	566	3,183	3,730	51,732	21,101	27,762	2,342	43,375	17,741	23,802	1,832	22,073	9,512	11,790
Madison	10,017	3,475	6,363	20	100	204	7,435	2,906	4,391	149	7,278	2,494	4,674	110	4,150	1,515	1,613
Morehouse	25,629	12,281	12,484	160	334	381	20,062	10,095	9,300	292	16,922	8,505	8,131	286	7,924	5,246	3,752
Ouachita	69,415	15,587	49,945	1,337	1,986	2,361	51,356	13,588	34,673	1,824	41,380	9,656	30,169	1,555	25,528	5,920	9,932
Pointe Coupee	20,758	12,395	7,504	107	593	625	16,250	10,108	5,502	429	14,675	9,320	5,121	234	7,546	3,996	3,133
Rapides	60,439	23,218	33,996	773	1,516	1,758	45,646	18,934	24,239	1,312	36,045	15,329	19,253	1,463	18,317	8,436	9,292
Richland	20,043	11,785	7,603	83	314	400	15,383	9,338	5,546	293	13,662	8,470	4,961	231	5,218	5,268	3,176
St. Helena	10,920	4,527	6,031	39	189	216	8,463	3,805	4,371	149	8,321	3,628	4,565	128	5,095	1,797	1,429
St. Landry	82,540	43,611	35,836	499	1,958	2,178	61,811	34,209	25,497	1,374	54,482	30,093	23,005	1,384	27,451	14,952	12,079
St. Martin	14,979	8,965	5,440	79	336	408	11,223	6,992	3,830	290	10,073	6,335	3,549	189	4,407	3,172	2,494
Tangipahoa	20,397	8,702	10,865	111	527	643	15,371	7,011	7,780	431	12,579	5,874	6,410	295	6,718	3,088	2,773
Tensas	4,147	1,744	2,312	23	42	67	3,235	1,446	1,728	46	3,455	1,503	1,917	35	2,091	835	529
West Baton Rouge	27,199	14,307	11,170	287	1,109	1,244	20,526	11,146	8,149	871	17,141	9,937	6,865	339	8,191	4,845	4,105
West Carroll	9,751	7,894	1,425	27	225	325	7,532	6,223	1,010	192	7,038	5,913	1,040	85	1,986	3,370	1,682
West Feliciana	15,310	10,883	3,740	89	373	651	12,783	9,283	2,951	572	7,407	5,092	2,180	135	2,874	2,871	1,662
District 5	776,292	315,773	419,465	8,946	24,200	28,638	588,177	255,642	302,438	20,161	492,134	217,238	259,929	14,967	262,603	116,312	113,219
	100.000%	40.677%	54.034%	1.152%	3.117%	3.689%	100.000%	43.463%	51.420%	3.428%	83.671%	44.142%	52.817%	3.041%	53.360%	23.634%	23.006%
District 6																	
Ascension	95,079	68,756	15,645	1,908	7,102	8,241	68,991	51,482	10,476	5,263	59,731	48,002	8,330	3,399	16,231	26,102	17,398
East Baton Rouge	192,123	127,474	41,497	8,404	12,160	13,787	153,164	105,788	30,180	9,840	124,613	95,091	21,169	8,353	37,516	53,202	33,895
Livingston	142,282	116,855	12,658	1,697	7,961	8,791	105,141	88,432	8,136	5,390	84,568	76,062	5,425	3,081	17,498	42,502	24,568
St. Tammany	188,586	150,717	17,240	3,705	13,021	14,945	144,054	117,539	12,033	10,197	130,216	112,770	9,249	8,197	25,292	66,338	38,586
Tangipahoa	112,760	72,634	31,014	1,363	5,487	6,599	86,120	58,194	21,437	4,409	63,677	47,038	14,115	2,524	20,322	24,726	18,629
Washington	45,463	29,943	13,434	216	1,134	1,410	34,951	23,743	9,732	901	27,587	18,835	8,102	650	11,445	9,545	6,597
District 6	776,293	566,379	131,488	17,293	46,865	53,773	592,421	445,178	91,994	36,000	490,392	397,798	66,390	26,204	128,304	222,415	139,673
	100.000%	72.959%	16.938%	2.228%	6.037%	6.927%	100.000%	75.146%	15.528%	6.077%	82.778%	81.118%	13.538%	5.343%	26.164%	45.355%	28.482%
Grand Total	4,657,757	2,657,652	1,543,119	107,288	262,638	322,549	3,570,548	2,124,511	1,115,769	223,662	2,894,346	1,827,989	902,748	163,609	1,161,004	968,780	764,562
	100.000%	57.059%	33.130%	2.303%	5.639%	6.925%	100.000%	59.501%	31.249%	6.264%	81.062%	63.157%	31.190%	5.653%	40.113%	33.471%	26.416%

# HFAHB1-4144-88

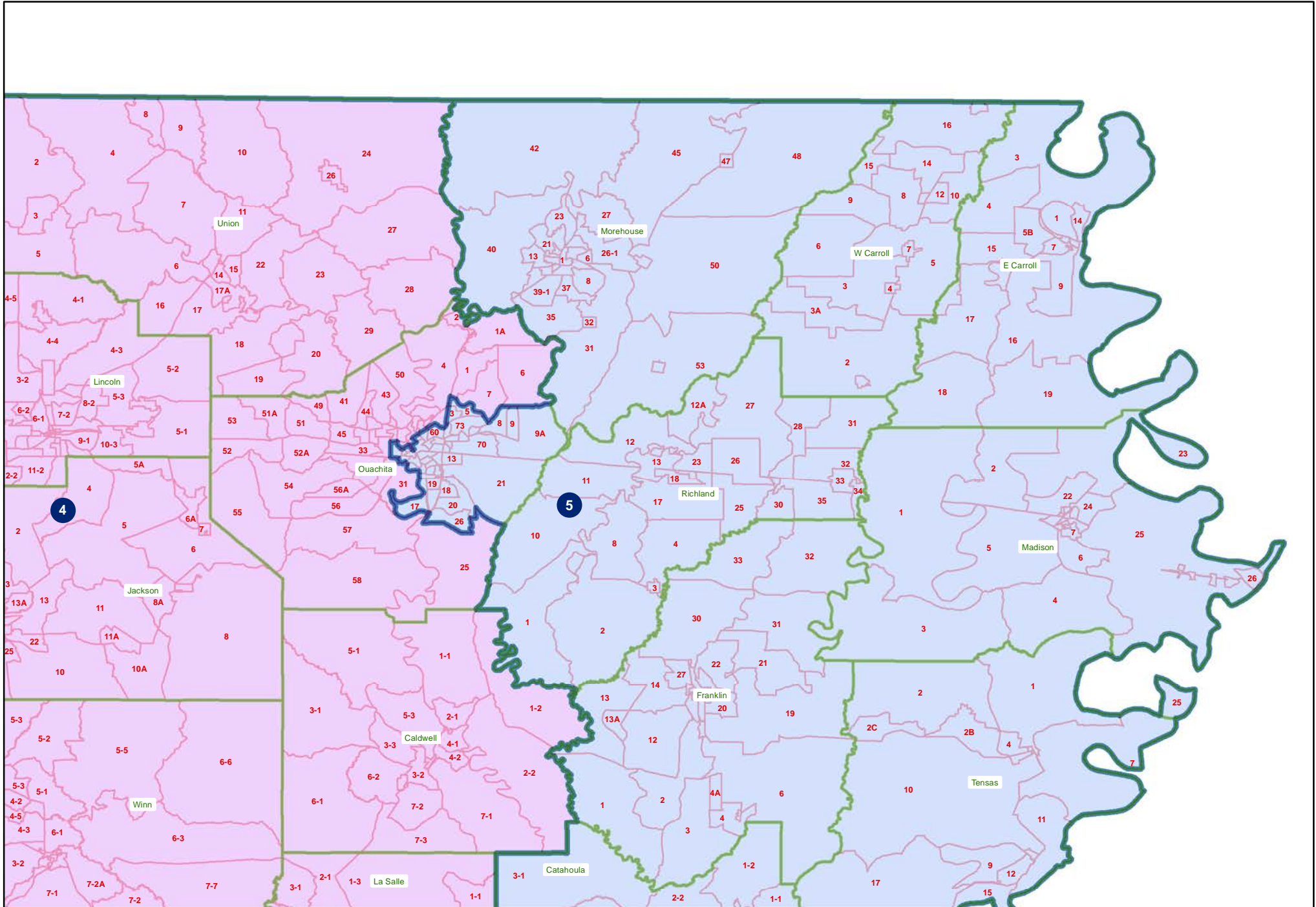
Statewide





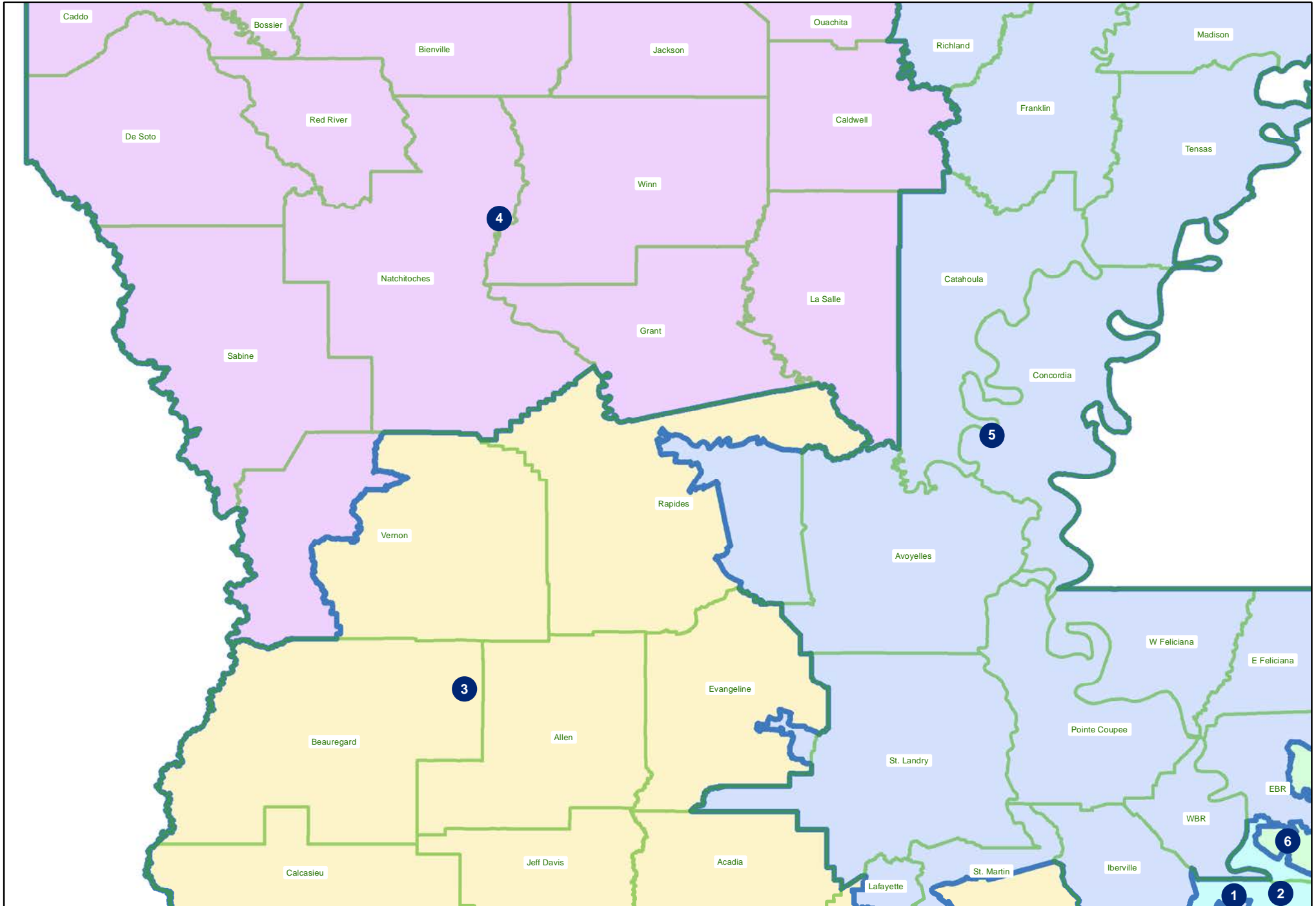
# HFAHB1-4144-88

## Northeast



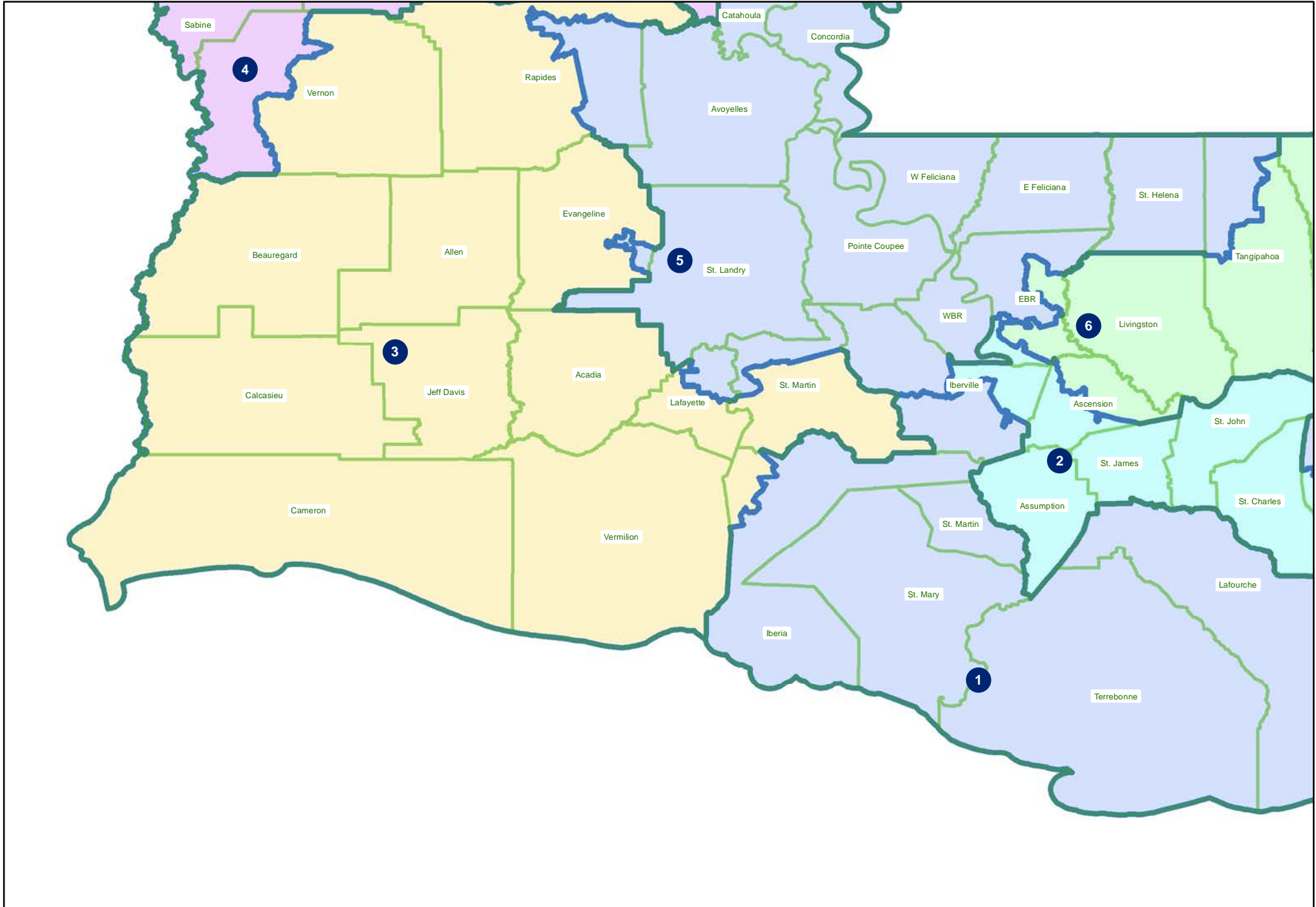
# HFAHB1-4144-88

## Central



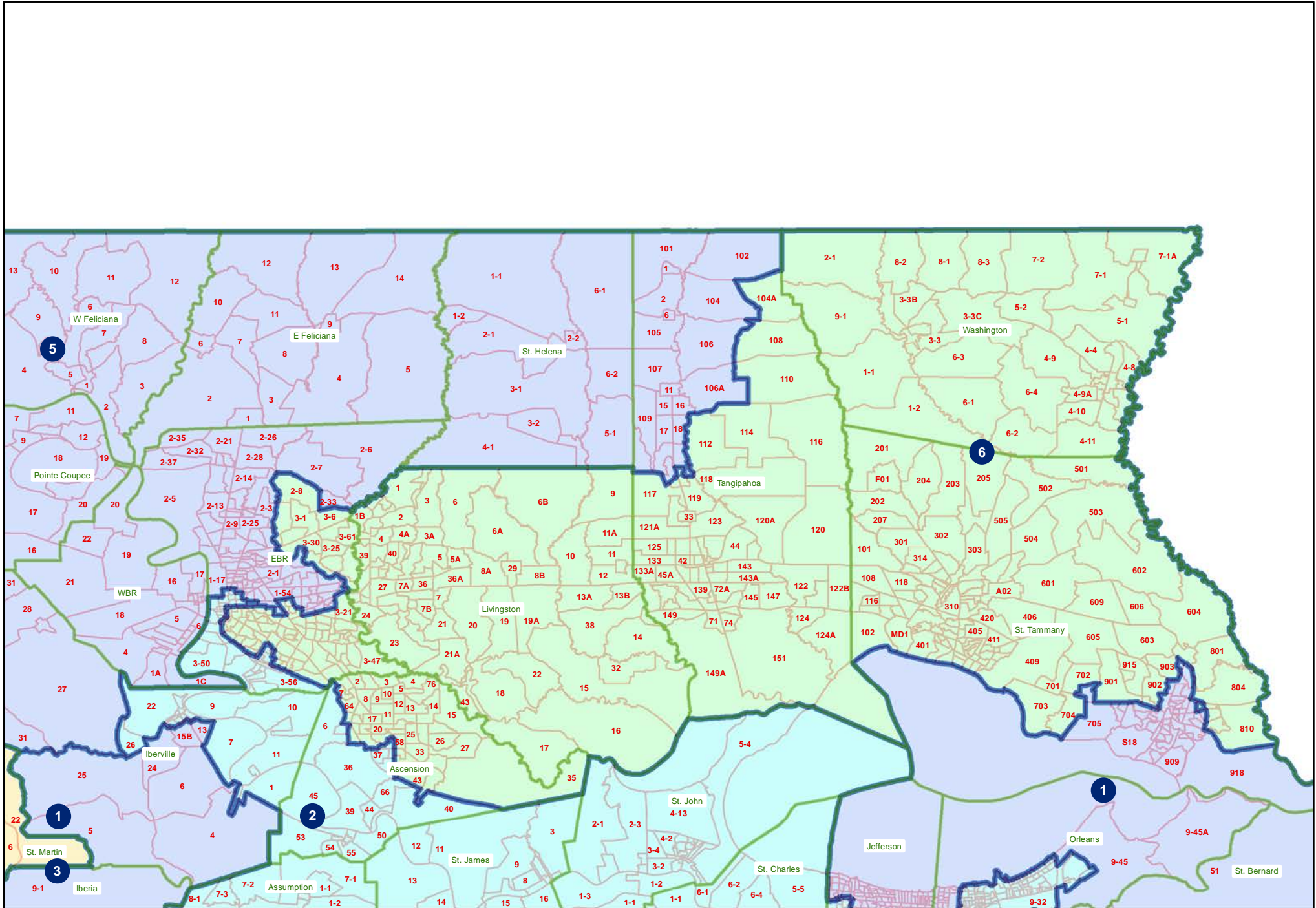
# HFAHB1-4144-88

## Southwest



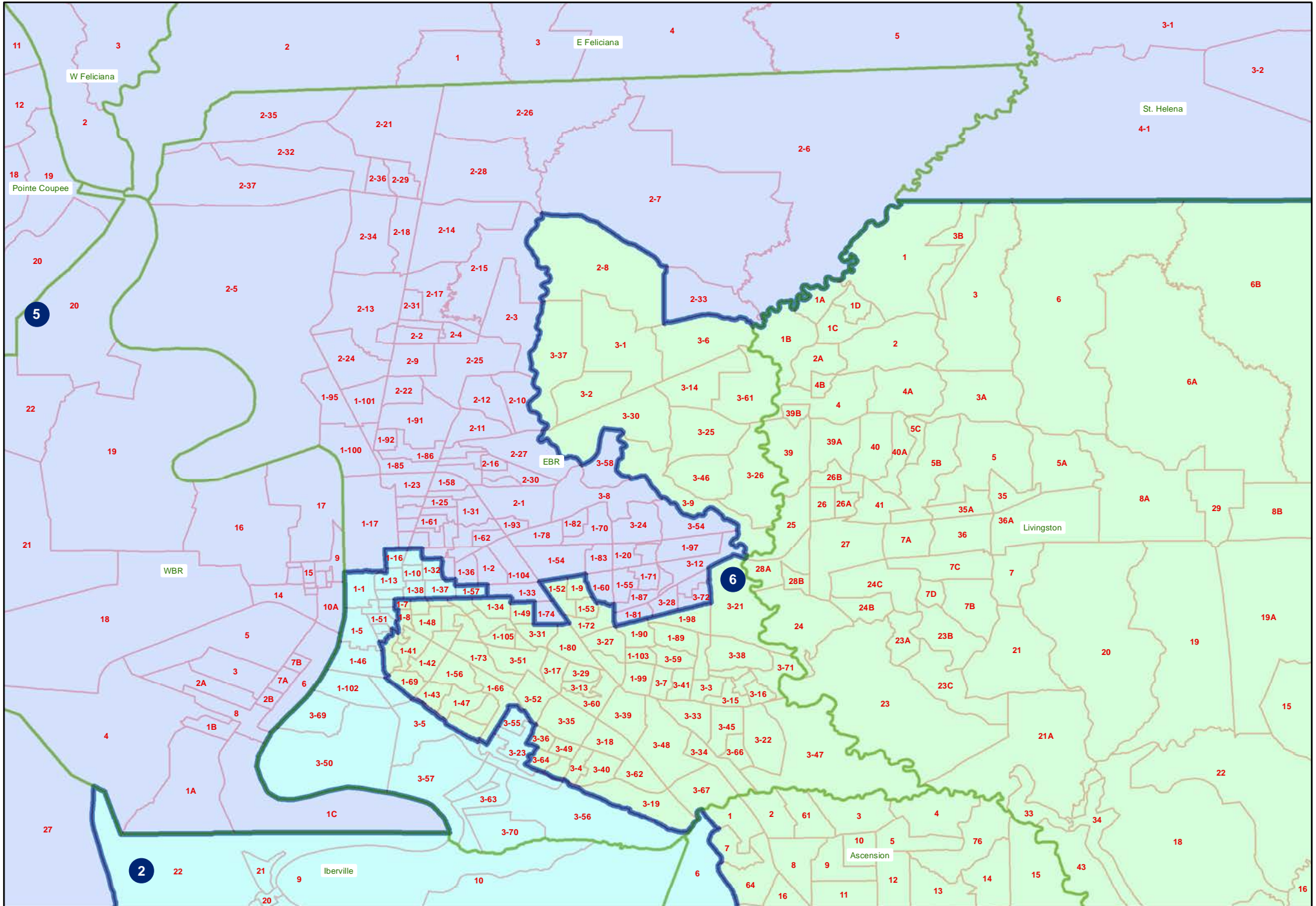
# HFAHB1-4144-88

FloridaParishes



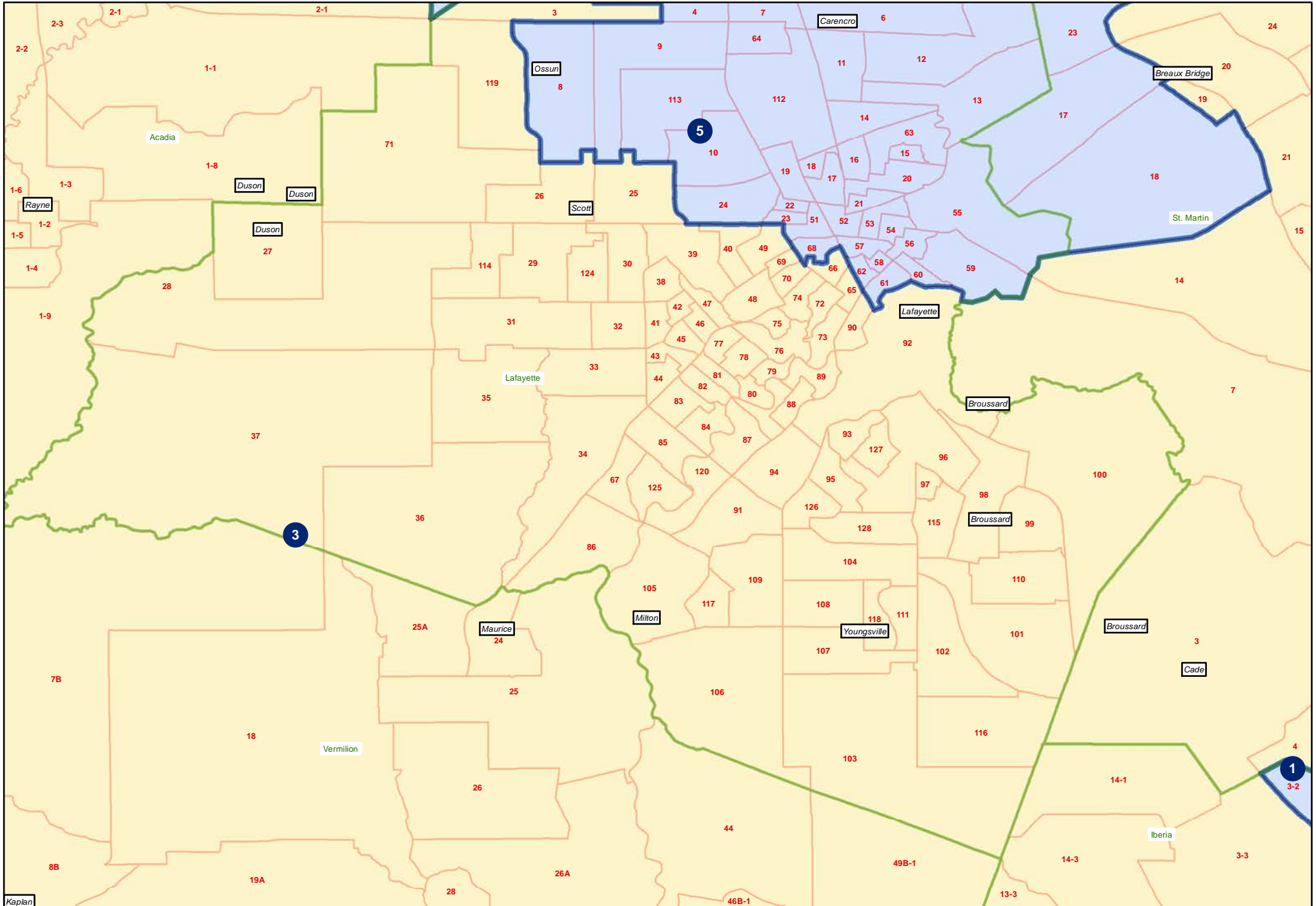
# HFAHB1-4144-88

## Baton Rouge



# HFAHB1-4144-88

## Lafayette



# HFAHB1-4144-88

## Orleans and Jefferson

