

2024 First Extraordinary Session

SENATE BILL NO. 8

BY SENATOR WOMACK

CONGRESS. Provides for redistricting of Louisiana congressional districts. (Item #1)(See Act)

1 AN ACT

2 To enact R.S. 18:1276.1 and to repeal R.S. 18:1276, relative to congressional districts; to
3 provide for the redistricting of Louisiana's congressional districts; to provide with
4 respect to positions and offices, other than congressional, which are based upon
5 congressional districts; to provide for the effectiveness; and to provide for related
6 matters.

7 Be it enacted by the Legislature of Louisiana:

8 Section 1. R.S. 18:1276.1 is hereby enacted to read as follows:

9 §1276.1. Congressional districts

10 Louisiana shall be divided into six congressional districts, and the
11 qualified electors of each district shall elect one representative to the United
12 States House of Representatives. The districts shall be composed as follows:

13 (1) District 1 is composed of Precincts 13, 14, 15, 18, 21, 22, 25, 26, 27, 33,
14 34, 35, 41, 43 and 69 of Ascension Parish; Precincts 1, 2, 3, 4, 5, 7, 8, 9, 10, 11,
15 12, 13, 14, 15, 16, 17, 18, 19, 20, 21, 22, 23, 24, 25, 26, 27, 28, 29, 30, 31, 32, 33, 34,
16 35, 36, 37, 38, 39, 40, 41, 42, 43, 44, 45, 46, 51, 52, 53, 54, 55, 56, 58, 59, 60, 61, 62,
17 63, 64, 65, 66, 67, 68, 69, 70, 71, 72, 73, 74, 75, 76, 77, 78, 79, 80, 81, 82, 83, 84, 85,

1 86, 87, 88, 89, 90, 91, 92, 93, 94, 95, 96, 97, 98, 99, 100, 101, 102, 103, 105, 106,
2 117, 118, 119, 120, 121, 122, 123, 124, 125A, 125B, 126, 127, 128, 129, 130, 132,
3 134, 136, 192, 198, 199, 246, 247, 248, 1-GI, 1-H, 2-H, 3-H, 4-H, 5-H, 6-H, 7-H,
4 8-H, 9-H, 1-K, 2-K, 3-K, 4-K, 5-K, 6-KA, 6-KB, 7-KA, 7-KB, 8-K, 9-K, 10-K,
5 11-K, 12-K, 13-KA, 14-K, 16-K, 17-K, 18-K, 19-K, 20-K, 25-K, 27-K, 28-K,
6 29-K, 34-K, 35-K and 1-L of Jefferson Parish; Precincts 3-3, 3-6, 4-1, 4-2, 4-3,
7 4-4, 4-5, 4-6, 7-4, 8-1, 9-1, 9-2, 10-1, 10-2, 10-3, 10-4, 10-6, 10-8, 10-9, 10-10,
8 10-11, 10-12, 10-13, 10-14, 10-15, 10-16, 11-1, 11-2, 11-3 and 11-5 of Lafourche
9 Parish; Precincts 13A, 13B, 14, 15, 16, 17, 22, 31, 32 and 38 of Livingston
10 Parish; Precincts 4-7, 4-8, 4-9, 4-11, 4-14, 4-15, 4-17, 4-17A, 4-18, 4-20, 4-21,
11 4-22, 4-23, 5-12, 5-13, 5-15, 5-16, 5-17, 5-18, 6-9, 7-41, 7-42, 9-45, 9-45A, 11-4,
12 11-5, 11-8, 11-9, 11-10, 11-11, 12-5, 12-6, 12-7, 12-9, 12-10, 13-5, 13-7, 13-8, 14-1,
13 14-2, 14-3, 14-4, 14-5, 14-6, 14-7, 14-8, 14-9, 14-10, 14-11, 14-13A, 14-14, 14-15,
14 14-16, 14-17, 14-18A, 14-20, 14-21, 16-1, 16-1A, 17-1, 17-17, 17-18, 17-18A, 17-19
15 and 17-20 of Orleans Parish; Plaquemines Parish; Precincts 32, 33, 34, 41, 42A,
16 43, 44, 45, 46, 50, 51, 52, 53, 54 and 55 of St. Bernard Parish; Precincts 1-6, 2-6,
17 3-1, 3-2, 3-3, 5-5, 6-1, 6-2, 6-3, 6-4, 6-6 and 6-8 of St. Charles Parish; St.
18 Tammany Parish and Precincts 44, 49, 70, 70A, 71, 72, 72A, 73, 74, 120B, 122A,
19 122B, 122C, 124, 137, 137A, 137B, 137C, 137D, 139, 141, 141A, 143, 143A, 145,
20 147, 149, 149A and 151 of Tangipahoa Parish.

21 (2) District 2 is composed of Precincts 6, 7, 9, 11, 17, 20, 23, 24, 28, 30, 31,
22 32, 36, 37, 38, 39, 40, 42, 44, 45, 47, 48, 50, 51, 52, 53, 54, 55, 57, 58, 62, 63, 65, 66,
23 68, 71, 72, 73, 77 and 78 of Ascension Parish; Assumption Parish; Iberville
24 Parish; Precincts 57, 104, 108, 115, 116, 131, 133, 138, 150, 151, 152, 153, 154,
25 155, 156, 157A, 157B, 170, 171, 172, 173, 174, 175, 176, 177, 178, 179A, 179B,
26 180, 181, 182, 183, 184, 185A, 185B, 187, 188, 189, 190, 191, 193A, 193B, 194A,
27 194B, 195, 196, 197A, 197B, 200, 201, 202, 203, 204, 205, 210, 211, 212, 213A,
28 213B, 213C, 214A, 214B, 215, 216A, 216B, 216C, 217, 225, 226, 227, 228, 229,
29 230, 231, 232A, 232B, 234, 235, 236, 237, 238A, 238B, 1-G, 2-G, 3-G, 4-G, 5-G,

1 6-G, 7-G, 8-G, 9-G, 10-G, 11-G, 12-G, 13-G, 13-KB, 15-K, 21-K, 22-K, 23-K,
 2 24-K, 26-K, 30-K, 31-K, 33-K, 1-W, 2-W, 3-W, 4-W, 5-W, 6-W and 7-W of
 3 Jefferson Parish; Precincts 1-2, 1-3, 1-4, 1-5, 1-6, 2-1, 2-1A, 2-3, 2-5, 2-7, 2-9,
 4 2-10, 2-11, 2-16, 5-1, 5-1A and 5-3 of Lafourche Parish; Precincts 1-1, 1-2, 1-5,
 5 1-6, 2-1, 2-2, 2-4, 2-6, 2-7, 3-1, 3-8, 3-9, 3-12, 3-14, 3-15, 3-18, 3-19, 3-20, 4-2, 4-3,
 6 4-6, 5-1, 5-2, 5-3, 5-5, 5-7, 5-8, 5-9, 5-10, 5-11, 6-1, 6-2, 6-4, 6-6, 6-7, 6-8, 7-1, 7-2,
 7 7-4, 7-5, 7-6, 7-7, 7-8, 7-9A, 7-10, 7-11, 7-12, 7-13, 7-14, 7-15, 7-16, 7-17, 7-18,
 8 7-19, 7-20, 7-21, 7-23, 7-24, 7-25, 7-25A, 7-26, 7-27, 7-27B, 7-28, 7-28A, 7-29,
 9 7-30, 7-32, 7-33, 7-35, 7-37, 7-37A, 7-40, 8-1, 8-2, 8-4, 8-6, 8-7, 8-8, 8-9, 8-12,
 10 8-13, 8-14, 8-15, 8-19, 8-20, 8-21, 8-22, 8-23, 8-24, 8-25, 8-26, 8-27, 8-28, 8-30, 9-1,
 11 9-3, 9-4, 9-5, 9-6, 9-7, 9-8, 9-9, 9-10, 9-11, 9-12, 9-13, 9-14, 9-15, 9-16, 9-17, 9-19,
 12 9-21, 9-23, 9-25, 9-26, 9-28, 9-28C, 9-29, 9-30, 9-30A, 9-31, 9-31A, 9-31B, 9-31D,
 13 9-32, 9-33, 9-34A, 9-35, 9-35A, 9-36, 9-36B, 9-37, 9-38, 9-38A, 9-39, 9-39B, 9-40,
 14 9-40A, 9-40C, 9-41, 9-41A, 9-41B, 9-41C, 9-41D, 9-42, 9-42C, 9-43A, 9-43B,
 15 9-43C, 9-43E, 9-43F, 9-43G, 9-43H, 9-43I, 9-43J, 9-43K, 9-43L, 9-43M, 9-43N,
 16 9-44, 9-44A, 9-44B, 9-44D, 9-44E, 9-44F, 9-44G, 9-44I, 9-44J, 9-44L, 9-44M,
 17 9-44N, 9-44O, 9-44P, 9-44Q, 10-3, 10-6, 10-7, 10-8, 10-9, 10-11, 10-12, 10-13,
 18 10-14, 11-2, 11-3, 11-12, 11-13, 11-14, 11-17, 12-1, 12-2, 12-3, 12-4, 12-11, 12-12,
 19 12-13, 12-14, 12-16, 12-17, 12-19, 13-1, 13-2, 13-3, 13-4, 13-6, 13-9, 13-10, 13-11,
 20 13-12, 13-13, 13-14, 13-15, 13-16, 14-12, 14-19, 14-23, 14-24A, 14-25, 14-26, 15-1,
 21 15-2, 15-3, 15-5, 15-6, 15-8, 15-9, 15-10, 15-11, 15-12, 15-12A, 15-13, 15-13A,
 22 15-13B, 15-14, 15-14A, 15-14B, 15-14C, 15-14D, 15-14E, 15-14F, 15-14G, 15-15,
 23 15-15A, 15-15B, 15-16, 15-17, 15-17A, 15-17B, 15-18, 15-18A, 15-18B, 15-18C,
 24 15-18D, 15-18E, 15-18F, 15-19, 15-19A, 15-19B, 15-19C, 16-2, 16-3, 16-4, 16-5,
 25 16-6, 16-7, 16-8, 16-9, 17-2, 17-3, 17-4, 17-5, 17-6, 17-7, 17-8, 17-9, 17-10, 17-11,
 26 17-12, 17-13, 17-13A, 17-14, 17-15 and 17-16 of Orleans Parish; Precincts 10, 11,
 27 12, 13, 14, 15, 20, 21, 22, 23, 24, 25, 30, 31, 40 and 42 of St. Bernard Parish;
 28 Precincts 1-1, 1-2, 1-3, 1-4, 1-5, 2-1, 2-3, 2-4, 2-5, 4-1, 4-2, 4-3, 4-4, 4-5, 5-1, 5-3,
 29 5-4, 7-1, 7-2, 7-3, 7-4, 7-5 and 7-6 of St. Charles Parish; St. James Parish and St.

1 **John the Baptist Parish.**

2 **(3) District 3 is composed of Acadia Parish; Precincts 167, 260, 261, 262,**
3 **300, 301, 302, 303, 304, 305, 306, 307, 308, 309E, 309W, 310, 311, 312, 313E,**
4 **313W, 314, 315E, 315W, 316E, 316W, 317, 318, 319N, 319S, 320E, 320W, 321,**
5 **322, 323, 324, 325, 326, 327, 328, 329, 330, 331, 332N, 332S, 333, 334, 335, 336,**
6 **337, 338, 339, 340, 360, 361, 362, 363, 364, 368, 369, 370, 372, 405, 440, 441, 463,**
7 **464, 467, 800, 801, 860S, 861E and 861W of Calcasieu Parish; Cameron Parish;**
8 **Iberia Parish; Jefferson Davis Parish; Precincts 1, 3, 8, 25, 26, 27, 28, 29, 30, 31,**
9 **32, 33, 34, 35, 36, 37, 38, 39, 40, 41, 42, 43, 44, 45, 46, 47, 48, 49, 65, 66, 67, 69, 70,**
10 **71, 72, 73, 74, 75, 76, 77, 78, 79, 80, 81, 82, 83, 84, 85, 86, 87, 88, 89, 90, 91, 92, 93,**
11 **94, 95, 96, 97, 98, 99, 100, 101, 102, 103, 104, 105, 106, 107, 108, 109, 110, 111,**
12 **114, 115, 116, 117, 118, 119, 120, 121, 123, 124, 125, 126, 127, 128, 130, 131, 133,**
13 **134, 135 and 136 of Lafayette Parish; Precincts 1-1, 2-2, 2-6, 2-8, 2-12, 2-13,**
14 **2-14, 2-15, 3-1, 3-2, 3-4, 3-5, 3-7, 5-2, 6-1, 6-2, 6-3, 6-4, 6-5, 7-1, 7-2, 7-3 and 11-4**
15 **of Lafourche Parish; St. Martin Parish; St. Mary Parish; Terrebonne Parish**
16 **and Vermilion Parish.**

17 **(4) District 4 is composed of Allen Parish; Beauregard Parish; Bienville**
18 **Parish; Bossier Parish; Precincts 1-1, 1-2, 1-3, 1-4, 1-5, 1-6, 1-7, 1-8, 1-9, 1-10,**
19 **1-11, 1-12, 1-13, 1-14, 2-1, 2-2, 2-4, 2-7, 3-1, 3-8, 4-1, 4-2, 4-3, 4-4, 4-5, 4-6, 4-7,**
20 **4-8, 4-9, 4-10, 5-10, 6-1, 7-1, 8-1, 8-2, 8-3, 8-4, 8-5, 8-6, 8-7, 8-8, 8-9, 9-1, 9-2, 9-3,**
21 **9-4, 9-5, 9-6, 9-7, 9-8, 9-9, 9-10, 9-11, 9-12, 9-13, 10-2, 11-1, 11-2, 11-3, 11-6, 11-7,**
22 **11-9, 11-10, 12-1, 12-3, 12-7, 12-8 and 12-9 of Caddo Parish; Precincts 160E,**
23 **160W, 161, 162E, 162W, 163, 164, 165, 166E, 166W, 365, 366, 367, 371N, 371S,**
24 **400, 401, 402, 403, 404, 406, 407, 408, 460E, 460W, 461, 465, 466E, 466W, 468,**
25 **469, 560, 561, 562, 600, 601, 602, 603, 660, 661, 662, 663, 664, 700, 701, 702, 703,**
26 **760, 761, 762 and 860N of Calcasieu Parish; Claiborne Parish; Precincts 10, 11,**
27 **11B, 11C, 16, 16A, 16B, 16C, 23, 28, 30A, 31A, 34, 34A, 34B, 35, 35A, 35B, 37,**
28 **37C, 46, 46A, 48, 49, 49A and 51 of De Soto Parish; Evangeline Parish; Grant**
29 **Parish; Jackson Parish; Lincoln Parish; Precincts 1, 1A, 2, 4, 25, 32, 33, 38, 41,**

1 43, 44, 44A, 45, 49, 50, 51, 51A, 53, 55, 57, 58, 61, 64, 71, 75, 76 and 77 of
 2 Ouachita Parish; Precincts C22, C23, C35, C37-A, C37-B, C41, S7, S8, S9, S10,
 3 S11, S13, S14, S21, S22, S23, S24, S25, S26, S27, S28 and S29 of Rapides Parish;
 4 Red River Parish; Sabine Parish; Union Parish; Vernon Parish; Webster Parish
 5 and Winn Parish.

6 (5) District 5 is composed of Precincts 1, 2, 3, 4, 5, 8, 10, 12, 16, 19, 61, 64
 7 and 76 of Ascension Parish; Precincts 1-1, 1-2, 1-3, 1-3A, 2-1, 2-1A, 2-2, 2-2A,
 8 2-2B, 2-2C, 2-2D, 2-2F, 2-3A, 2-4, 2-4A, 2-5, 2-5E, 2-7, 2-8, 3-1B, 4-1, 4-2, 5-1,
 9 5-1A, 5-1B, 6-1A, 6-2, 6-2A, 7-3B and 9-4B of Avoyelles Parish; Caldwell Parish;
 10 Catahoula Parish; Concordia Parish; Precincts 1-12, 1-34, 1-41, 1-42, 1-43, 1-44,
 11 1-46, 1-47, 1-49, 1-56, 1-69, 1-74, 1-75, 1-76, 1-79, 1-80, 1-99, 1-105, 1-107, 2-6,
 12 2-7, 2-8, 2-33, 3-1, 3-2, 3-3, 3-4, 3-5, 3-6, 3-7, 3-9, 3-13, 3-14, 3-15, 3-16, 3-17,
 13 3-18, 3-21, 3-22, 3-23, 3-25, 3-26, 3-29, 3-30, 3-31, 3-33, 3-34, 3-35, 3-36, 3-37,
 14 3-38, 3-39, 3-40, 3-41, 3-43, 3-45, 3-46, 3-47, 3-48, 3-49, 3-51, 3-53, 3-58, 3-60,
 15 3-61, 3-62, 3-64, 3-65, 3-66, 3-67, 3-68, 3-71, 3-73 and 3-74 of East Baton Rouge
 16 Parish; East Carroll Parish; East Feliciana Parish; Franklin Parish; La Salle
 17 Parish; Precincts 1, 1A, 1B, 1C, 1D, 2, 2A, 3, 3A, 3B, 4, 4A, 4B, 5, 5A, 5B, 5D, 6,
 18 6A, 6B, 7, 7A, 7B, 7C, 7D, 8A, 8B, 9, 10, 11, 11A, 12, 18, 18A, 19, 19A, 20, 21,
 19 21A, 21B, 23, 23A, 23B, 23C, 24, 24B, 24C, 24D, 25, 26, 26A, 26B, 26C, 27, 28,
 20 29, 30, 33, 34, 35, 35A, 36, 36A, 39, 39A, 39B, 40, 40A, 41 and 43 of Livingston
 21 Parish; Madison Parish; Morehouse Parish; Precincts 3, 5, 6, 7, 8, 9, 9A, 10, 11,
 22 12, 13, 14, 15, 16, 17, 18, 19, 20, 21, 22, 23, 24, 26, 27, 28, 30, 31, 34, 35, 36, 37, 39,
 23 40, 42, 46, 47, 48, 52, 52A, 54, 56, 56A, 59, 60, 62, 63, 65, 65A, 66, 67, 68, 69, 70,
 24 72, 73, 74, 78 and 79 of Ouachita Parish; Richland Parish; St. Helena Parish;
 25 Precincts 2, 6, 11, 15, 16, 17, 28, 33, 40A, 41, 42, 43, 45A, 45B, 46, 47, 101, 102,
 26 104, 105, 106, 106A, 107, 108, 109, 110, 111A, 112, 114, 115B, 116, 117, 118,
 27 118A, 119, 120, 120A, 121, 121A, 123, 125, 127, 129A, 133 and 133A of
 28 Tangipahoa Parish; Tensas Parish; Washington Parish; West Carroll Parish
 29 and West Feliciana Parish.

1 (6) District 6 is composed of Precincts 3-1, 3-3, 4-2A, 4-2B, 6-1B, 7-1, 7-3,
2 8-1, 8-2A, 8-2B, 8-3, 8-3A, 9-1A, 9-2, 9-2A, 9-3, 9-4, 9-5B, 10-2, 10-2A, 10-2B,
3 10-3A, 10-3B, 10-4, 11-1 and 11-2A of Avoyelles Parish; Precincts 2-3, 2-5, 2-6,
4 2-8, 2-9, 2-10, 2-11, 2-12, 3-2, 3-3, 3-4, 3-5, 3-6, 3-7, 3-9, 5-1, 5-2, 5-3, 5-4, 5-5, 5-6,
5 5-7, 5-8, 5-9, 5-11, 6-2, 6-3, 6-4, 6-5, 6-6, 6-7, 6-8, 6-9, 6-10, 7-2, 7-3, 7-4, 7-5, 7-6,
6 7-7, 7-8, 7-9, 7-10, 10-1, 10-3, 10-4, 10-5, 10-6, 10-7, 10-8, 10-9, 11-4, 11-5, 11-8,
7 12-2, 12-4, 12-5, 12-6, 12-10 and 12-11 of Caddo Parish; Precincts 1, 4, 5, 5A, 6,
8 6A, 6B, 9, 21, 22, 22A, 26, 26A, 30, 31, 32, 33, 33A, 38, 38A, 42, 44, 46B, 53, 55,
9 56, 59, 60, 60A, 63 and 63A of De Soto Parish; Precincts 1-1, 1-2, 1-3, 1-4, 1-5,
10 1-6, 1-7, 1-8, 1-9, 1-10, 1-11, 1-13, 1-14, 1-15, 1-16, 1-17, 1-18, 1-19, 1-20, 1-21,
11 1-22, 1-23, 1-24, 1-25, 1-26, 1-27, 1-28, 1-29, 1-30, 1-31, 1-32, 1-33, 1-35, 1-36,
12 1-37, 1-38, 1-39, 1-40, 1-45, 1-48, 1-50, 1-51, 1-52, 1-53, 1-54, 1-55, 1-57, 1-58,
13 1-59, 1-60, 1-61, 1-62, 1-63, 1-64, 1-65, 1-66, 1-67, 1-68, 1-70, 1-71, 1-72, 1-73,
14 1-77, 1-78, 1-81, 1-82, 1-83, 1-84, 1-85, 1-86, 1-87, 1-88, 1-89, 1-90, 1-91, 1-92,
15 1-93, 1-94, 1-95, 1-96, 1-97, 1-98, 1-100, 1-101, 1-102, 1-103, 1-104, 2-1, 2-2, 2-3,
16 2-4, 2-5, 2-9, 2-10, 2-11, 2-12, 2-13, 2-14, 2-15, 2-16, 2-17, 2-18, 2-19, 2-20, 2-21,
17 2-22, 2-23, 2-24, 2-25, 2-26, 2-27, 2-28, 2-29, 2-30, 2-31, 2-32, 2-34, 2-35, 2-36,
18 2-37, 2-38, 3-8, 3-10, 3-11, 3-12, 3-19, 3-20, 3-24, 3-27, 3-28, 3-32, 3-42, 3-44, 3-50,
19 3-52, 3-54, 3-55, 3-56, 3-57, 3-59, 3-63, 3-69, 3-70, 3-72, 3-75 and 3-76 of East
20 Baton Rouge Parish; Precincts 2, 4, 5, 6, 7, 9, 10, 11, 12, 13, 14, 15, 16, 17, 18, 19,
21 20, 21, 22, 23, 24, 50, 51, 52, 53, 54, 55, 56, 57, 58, 59, 60, 61, 63, 64, 68, 112, 113,
22 122 and 129 of Lafayette Parish; Natchitoches Parish; Pointe Coupee Parish;
23 Precincts C1, C2, C3, C4, C5, C6, C7, C8, C9, C10, C11-A, C11-B, C13, C14,
24 C15, C17, C18, C19, C20, C21, C24, C25, C26, C27, C28, C30, C31, C32, C33,
25 C34, C36, C38-A, C38-B, C39, C40, C42, N1, N2, N3, N4, N5, N6, N7, N8, N9,
26 N10, N11, N12, N13-A, N13-B, N14-A, N14-B, N15, N16, N17, N18-A, N18-B,
27 N19, N20, N21, N22, N23, N24, N25, N26, N27, N28, N29, S1, S2, S4, S5, S6A,
28 S6B, S15, S16, S17, S18, S19 and S20 of Rapides Parish; St. Landry Parish and
29 West Baton Rouge Parish.

1 Section 2. R.S. 18:1276 is hereby repealed.

2 Section 3.(A) The precincts referenced in this Act are those contained in the file
3 named "2024 Precinct Shapefiles (1-10-2024)" available on the website of the Legislature
4 of Louisiana on the effective date of this Section. The 2024 Precinct Shapefiles are based
5 upon those Voting Districts (VTDs) contained in the 2020 Census Redistricting TIGER/Line
6 Shapefiles for the State of Louisiana as those files have been modified and validated through
7 the data verification program of the Louisiana House of Representatives and the Louisiana
8 Senate to represent precinct changes submitted through January 10, 2024, to the Legislature
9 of Louisiana by parish governing authorities pursuant to the provisions of R.S. 18:532 and
10 532.1.

11 (B) When a precinct referenced in this Act has been subdivided by action of the
12 parish governing authority on a nongeographic basis or subdivided by action of the parish
13 governing authority on a geographic basis in accordance with the provisions of R.S.
14 18:532.1, the enumeration in this Act of the general precinct designation shall include all
15 nongeographic and all geographic subdivisions thereof, however such subdivisions may be
16 designated.

17 (C) The territorial limits of the districts as provided in this Act shall continue in
18 effect until changed by law regardless of any subsequent change made to the precincts by
19 the parish governing authority.

20 Section 4. The provisions of this Act shall not reduce the term of office of any person
21 holding any position or office on the effective date of this Section for which the appointment
22 or election is based upon a congressional district as composed pursuant to R.S. 18:1276. Any
23 position or office that is filled by appointment or election based upon a congressional district
24 and that is to be filled after January 3, 2025, shall be appointed or elected from a district as
25 it is described in Section 1 of this Act.

26 Section 5.(A) Solely for the purposes of qualifying for election and the conduct of
27 the election of representatives to the United States Congress at the regularly scheduled
28 election for representatives to the congress in 2024, the provisions of Section 1 of this Act
29 shall become effective upon signature of this Act by the governor or, if not signed by the

1 governor, upon expiration of the time for bills to become law without signature by the
 2 governor, as provided in Article III, Section 18 of the Constitution of Louisiana. If this Act
 3 is vetoed by the governor and subsequently approved by the legislature, the provisions of
 4 Section 1 of this Act shall become effective on the day following such approval for the
 5 purposes established in this Subsection.

6 (B) For subsequent elections of representatives to the United States Congress and for
 7 all other purposes, the provisions of Section 1 of this Act shall become effective at noon on
 8 January 3, 2025.

9 (C) The provisions of Section 2 of this Act shall become effective at noon on January
 10 3, 2025.

11 (D) The provisions of this Section and Sections 3 and 4 of this Act shall become
 12 effective upon signature of this Act by the governor or, if not signed by the governor, upon
 13 expiration of the time for bills to become law without signature by the governor, as provided
 14 in Article III, Section 18 of the Constitution of Louisiana. If this Act is vetoed by the
 15 governor and subsequently approved by the legislature, the provisions of this Section and
 16 Sections 3 and 4 of this Act shall become effective on the day following such approval.

The original instrument and the following digest, which constitutes no part
 of the legislative instrument, were prepared by J. W. Wiley.

DIGEST

SB 8 Engrossed

2024 First Extraordinary Session

Womack

Present U.S. Constitution (14th Amendment) provides that representatives in congress shall be apportioned among the several states according to their respective numbers, counting the whole number of persons in each state. The U.S. Supreme Court has held that the population of congressional districts in the same state must be as nearly equal in population as practicable.

Present law provides for six congressional districts based upon the 2020 federal decennial census.

Proposed law redraws district boundaries for the congressional districts based upon the 2020 federal decennial census.

Proposed law provides that the new districts become effective upon signature of governor or lapse of time for gubernatorial action for election purposes only for the regular congressional elections in 2024. Retains present law districts based upon the 2020 census until noon on January 3, 2025, at which time present law is repealed and the new districts based upon the 2020 census, as established by proposed law, become effective for all other purposes.

Proposed law specifies that precincts referenced in district descriptions are those precincts identified as Voting Districts (VTDs) contained in the file named "2024 Precinct Shapefiles (1-10-2024)" available on the La. Legislature's website. Specifies that the 2024 Precinct Shapefiles are based upon those Voting Districts (VTDs) contained in the 2020 Census Redistricting TIGER/Line Shapefiles for the State of Louisiana as those files have been modified and validated through the data verification program of the La. legislature. Also specifies that if any such precinct has been subdivided by action of the parish governing authority on a nongeographic basis or subdivided by action of the parish governing authority on a geographic basis in accordance with present law, the enumeration of the general precinct designation shall include all nongeographic and all geographic subdivisions thereof. Further provides that the territorial limits of the districts as enacted shall continue in effect until changed by law regardless of any subsequent change made to the precincts by the parish governing authority.

Proposed law specifies that proposed law does not reduce the term of office of any person holding any position or office on the effective date of proposed law for which the appointment or election is based upon a congressional district as composed pursuant to present law. Specifies that any position or office filled after Jan. 1, 2025, for which the appointment or election is based upon a congressional district shall be appointed or elected from a district as it is described in proposed law.

Population data in the summaries accompanying this digest are derived from 2020 Census Redistricting Data (Public Law 94-171), Summary File for Louisiana. Population data, statistical information, and maps are supplied for purposes of information and analysis and comprise no part of proposed law.

Effective upon signature of governor or lapse of time for gubernatorial action for election purposes only for the regular congressional elections in 2024; effective for all other purposes at noon on January 3, 2025.

(Adds R.S. 18:1276.1; repeals R.S. 18:1276)

Summary of Amendments Adopted by Senate

Committee Amendments Proposed by Senate Committee on Senate and Governmental Affairs to the original bill

1. Changes boundaries of districts.

Plan Statistics

Plan: Senate Bill 8 Engrossed by Sen. Womack

<u>Districts:</u>	<u># of Members</u>	<u>Actual Population</u>	<u>Ideal Population</u>	<u>Absolute Deviation</u>	<u>Relative Deviation</u>
District 1	1	776,327	776,292	35	0.005%
District 2	1	776,316	776,292	24	0.003%
District 3	1	776,287	776,292	-5	-0.001%
District 4	1	776,302	776,292	10	0.001%
District 5	1	776,285	776,292	-7	-0.001%
District 6	1	776,240	776,292	-52	-0.007%
Grand Total:	6	4,657,757	4,657,752		

Ideal Population Per Member: 776292
 Number of Districts for Plan Type: 6
 Range of District Populations: 776,240 to 776,327
 Absolute Mean Deviation: 14
 Absolute Range: -52 to 35
 Absolute Overall Range: 87
 Relative Mean Deviation: 0.00%
 Relative Range: -0.01% to 0.00%
 Relative Overall Range: 0.01%

<i>Ideal - Actual:</i>	-5
<i>Remainder:</i>	5
<i>Unassigned Population:</i>	0

Total Population

Plan: Senate Bill 8 Engrossed by Sen. Womack

	Total Population	Total White	Total Black	Total Asian	Total American Indian	Total Other	Total Hispanic	VAP Total	VAP White	VAP Black	VAP Asian	VAP American Indian	VAP Other	VAP Hispanic Total
District 1	776,327	553,751	108,188	23,991	17,494	72,903	90,968	603,907	444,675	76,646	17,622	12,740	52,224	64,365
	100.000%	71.330%	13.936%	3.090%	2.253%	9.391%	11.718%	100.000%	73.633%	12.692%	2.918%	2.110%	8.648%	10.658%
District 2	776,316	271,367	412,387	24,960	9,683	57,919	74,305	598,204	225,203	305,124	19,711	7,377	40,789	51,406
	100.000%	34.956%	53.121%	3.215%	1.247%	7.461%	9.571%	100.000%	37.647%	51.007%	3.295%	1.233%	6.819%	8.593%
District 3	776,287	514,019	189,998	16,980	18,502	36,788	43,292	588,557	405,242	132,825	12,215	12,990	25,285	29,021
	100.000%	66.215%	24.475%	2.187%	2.383%	4.739%	5.577%	100.000%	68.853%	22.568%	2.075%	2.207%	4.296%	4.931%
District 4	776,302	541,739	169,212	13,823	20,170	31,358	39,630	593,646	424,349	122,168	9,987	15,060	22,082	27,348
	100.000%	69.785%	21.797%	1.781%	2.598%	4.039%	5.105%	100.000%	71.482%	20.579%	1.682%	2.537%	3.720%	4.607%
District 5	776,285	491,932	225,122	14,471	12,211	32,549	38,166	597,217	392,767	160,995	10,902	9,249	23,304	26,564
	100.000%	63.370%	29.000%	1.864%	1.573%	4.193%	4.916%	100.000%	65.766%	26.958%	1.825%	1.549%	3.902%	4.448%
District 6	776,240	284,844	438,212	13,063	9,000	31,121	36,188	589,017	232,275	318,011	9,979	6,824	21,928	24,958
	100.000%	36.695%	56.453%	1.683%	1.159%	4.009%	4.662%	100.000%	39.434%	53.990%	1.694%	1.159%	3.723%	4.237%
Grand Total	4,657,757	2,657,652	1,543,119	107,288	87,060	262,638	322,549	3,570,548	2,124,511	1,115,769	80,416	64,240	185,612	223,662
	100.000%	57.059%	33.130%	2.303%	1.869%	5.639%	6.925%	100.000%	59.501%	31.249%	2.252%	1.799%	5.198%	6.264%

Voter Registration

Plan: Senate Bill 8 Engrossed by Sen. Womack

	Reg Total Dec 2023	Reg White Dec 2023	Reg Black Dec 2023	Reg Other Dec 2023	Reg Dem Total Dec 2023	Reg Rep Total Dec 2023	Reg Other Total Dec 2023
District 1	479,186	385,098	51,969	42,119	127,253	205,251	146,682
	79.348%	80.365%	10.845%	8.790%	26.556%	42.833%	30.611%
District 2	466,623	181,215	245,721	39,687	267,146	76,552	122,925
	78.004%	38.835%	52.659%	8.505%	57.251%	16.406%	26.344%
District 3	452,113	336,261	94,266	21,586	142,481	185,022	124,610
	76.817%	74.375%	20.850%	4.774%	31.514%	40.924%	27.562%
District 4	443,328	339,359	84,236	19,733	124,622	202,564	116,142
	74.679%	76.548%	19.001%	4.451%	28.111%	45.692%	26.198%
District 5	453,903	315,312	120,990	17,601	154,290	182,707	116,906
	76.003%	69.467%	26.655%	3.878%	33.992%	40.252%	25.756%
District 6	447,134	183,201	244,647	19,286	236,714	99,530	110,890
	75.912%	40.972%	54.714%	4.313%	52.940%	22.260%	24.800%
Grand Total	2,742,287	1,740,446	841,829	160,012	1,052,506	951,626	738,155

Splits

Plan: Senate Bill 8 Engrossed by Sen. Womack

	Total Population	Total White	Total Black	Total Asian	Total American Indian	Total Other	VAP Total	VAP White	VAP Black	VAP Asian	VAP American Indian	VAP Other	Reg Total Dec 2023	Reg White Dec 2023	Reg Black Dec 2023	Reg Other Dec 2023
District 1																
*Ascension	27,718	23,228	2,058	201	522	1,709	20,611	17,693	1,304	121	368	1,125	17,243	15,672	954	617
*Jefferson	240,081	155,518	30,822	11,880	4,356	37,505	192,148	129,999	22,555	8,951	3,295	27,348	144,399	112,491	12,528	19,380
*Lafourche	47,193	37,212	3,189	577	3,242	2,973	35,543	29,123	1,939	413	2,140	1,928	25,117	22,442	1,115	1,560
*Livingston	13,310	11,276	1,138	84	259	553	10,369	8,949	804	46	207	363	8,639	7,732	668	239
*Orleans	64,493	50,312	6,498	2,503	749	4,431	53,843	42,329	5,556	1,950	609	3,399	41,535	34,071	3,239	4,225
Plaquemines	23,515	14,287	5,428	1,317	697	1,786	17,334	10,856	3,857	925	500	1,196	13,143	8,996	2,934	1,213
*St. Bernard	20,543	11,907	5,780	617	436	1,803	14,871	8,992	3,854	424	327	1,274	12,975	8,866	3,231	878
*St. Charles	19,887	13,870	3,607	347	356	1,707	14,990	10,865	2,485	229	241	1,170	12,791	9,837	2,063	891
St. Tammany	264,570	196,641	38,643	5,774	5,660	17,852	202,228	154,621	26,761	4,075	4,161	12,610	174,307	141,262	21,129	11,916
*Tangipahoa	55,017	39,500	11,025	691	1,217	2,584	41,970	31,248	7,531	488	892	1,811	29,037	23,729	4,108	1,200
District 1	776,327	553,751	108,188	23,991	17,494	72,903	603,907	444,675	76,646	17,622	12,740	52,224	479,186	385,098	51,969	42,119
	100.000%	71.330%	13.936%	3.090%	2.253%	9.391%	100.000%	73.633%	12.692%	2.918%	2.110%	8.648%	79.348%	80.365%	10.845%	8.790%
District 2																
*Ascension	67,009	34,447	25,291	1,260	985	5,026	48,560	26,086	17,639	850	679	3,306	41,549	23,859	15,251	2,439
Assumption	21,039	13,722	6,220	96	258	743	16,616	11,145	4,707	57	197	510	13,323	8,977	4,131	215
Iberville	30,241	14,833	13,730	202	274	1,202	24,086	12,462	10,232	149	221	1,022	19,906	9,999	9,484	423
*Jefferson	200,700	65,417	95,395	11,144	3,330	25,414	152,506	54,136	69,620	8,741	2,540	17,469	109,034	40,445	53,674	14,915
*Lafourche	19,271	10,678	7,472	188	292	641	14,620	8,657	5,185	132	200	446	10,440	6,675	3,412	353
*Orleans	319,504	76,150	212,471	10,353	2,917	17,613	252,353	67,923	160,512	8,570	2,339	13,009	196,855	52,054	127,351	17,450
*St. Bernard	23,221	12,590	6,529	764	511	2,827	16,904	10,000	4,090	558	361	1,895	12,710	9,178	2,362	1,170
*St. Charles	32,662	19,680	10,321	490	569	1,602	24,551	15,289	7,405	300	426	1,131	20,791	13,574	6,207	1,010
St. James	20,192	9,973	9,762	60	82	315	15,505	7,883	7,297	31	64	230	14,531	7,116	7,196	219
St. John the Baptist	42,477	13,877	25,196	403	465	2,536	32,503	11,622	18,437	323	350	1,771	27,484	9,338	16,653	1,493
District 2	776,316	271,367	412,387	24,960	9,683	57,919	598,204	225,203	305,124	19,711	7,377	40,789	466,623	181,215	245,721	39,687
	100.000%	34.956%	53.121%	3.215%	1.247%	7.461%	100.000%	37.647%	51.007%	3.295%	1.233%	6.819%	78.004%	38.835%	52.659%	8.505%
District 3																
Acadia	57,576	44,480	10,864	238	573	1,421	42,943	34,071	7,383	173	400	916	36,151	29,438	5,995	718
*Calcasieu	131,299	69,747	50,290	3,564	1,764	5,934	99,893	55,812	35,987	2,563	1,347	4,184	65,841	39,808	22,822	3,211
Cameron	5,617	5,232	125	30	75	155	4,358	4,100	79	23	47	109	4,072	3,936	61	75
Iberia	69,929	39,206	24,556	2,123	794	3,250	52,791	31,295	17,069	1,562	581	2,284	42,188	26,848	13,441	1,899
Jefferson Davis	32,250	25,066	5,837	183	472	692	24,039	19,121	4,006	111	325	476	18,733	15,509	2,784	440
*Lafayette	180,411	131,849	29,263	5,960	2,665	10,674	137,635	103,919	19,952	4,314	2,029	7,421	111,925	91,759	13,498	6,668
*Lafourche	31,093	23,820	5,194	260	690	1,129	24,456	19,058	3,953	193	437	815	18,681	16,364	1,750	567
St. Martin	51,767	33,259	15,921	597	539	1,451	39,404	26,278	11,293	407	413	1,013	33,997	23,306	9,880	811
St. Mary	49,406	26,949	15,991	835	1,670	3,961	37,521	21,594	11,520	593	1,173	2,641	29,204	17,999	9,570	1,635

Splits

Plan: Senate Bill 8 Engrossed by Sen. Womack

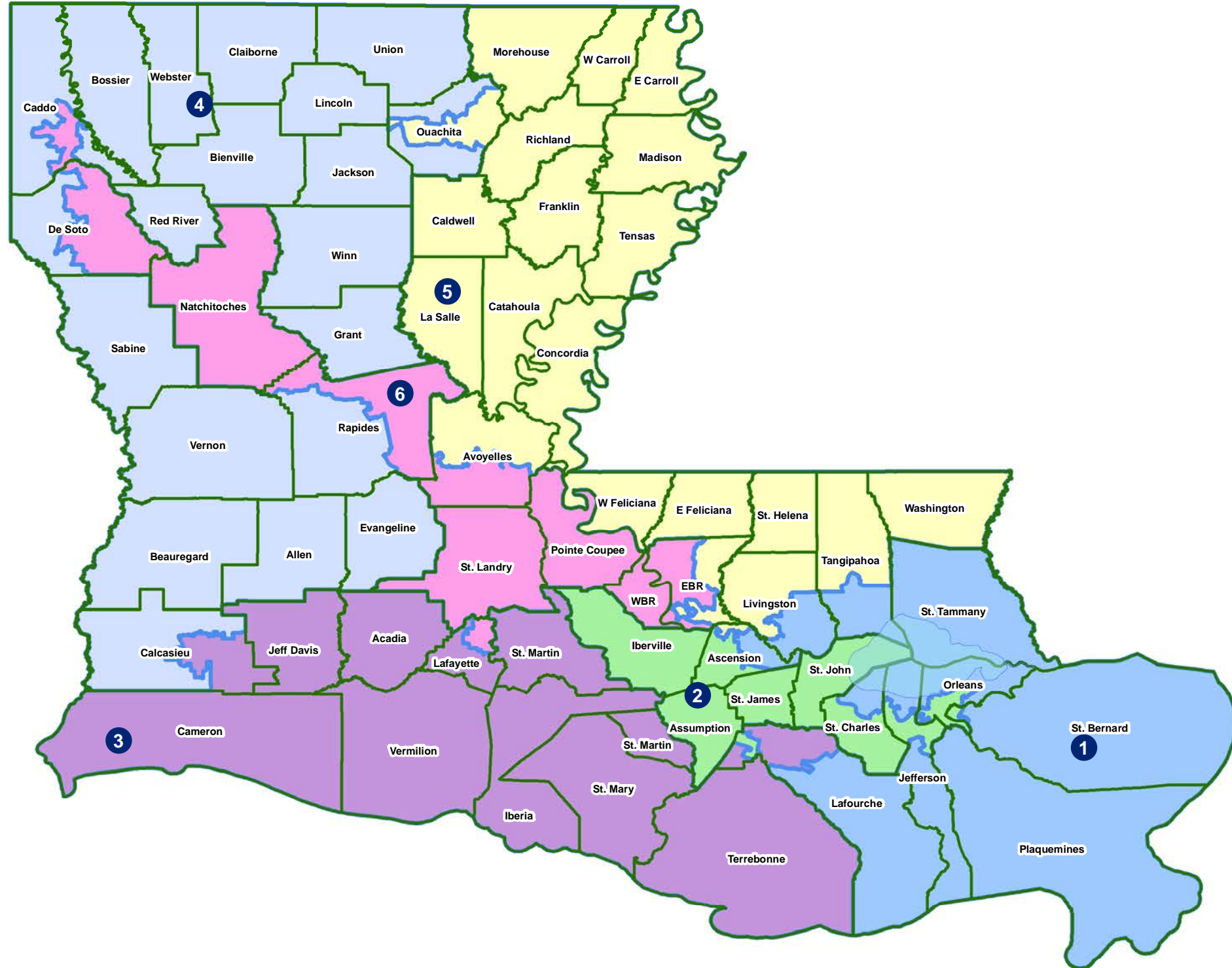
	Total Population	Total White	Total Black	Total Asian	Total American Indian	Total Other	VAP Total	VAP White	VAP Black	VAP Asian	VAP American Indian	VAP Other	Reg Total Dec 2023	Reg White Dec 2023	Reg Black Dec 2023	Reg Other Dec 2023
District 3																
Terrebonne	109,580	69,934	23,147	1,743	8,637	6,119	82,505	55,631	15,796	1,239	5,750	4,089	55,810	41,601	9,910	4,299
Vermilion	57,359	44,477	8,810	1,447	623	2,002	43,012	34,363	5,787	1,037	488	1,337	35,511	29,693	4,555	1,263
District 3	776,287	514,019	189,998	16,980	18,502	36,788	588,557	405,242	132,825	12,215	12,990	25,285	452,113	336,261	94,266	21,586
	100.000%	66.215%	24.475%	2.187%	2.383%	4.739%	100.000%	68.853%	22.568%	2.075%	2.207%	4.296%	76.817%	74.375%	20.850%	4.774%
District 4																
Allen	22,750	16,327	4,490	246	947	740	17,510	12,751	3,275	182	646	656	11,079	8,704	1,920	455
Beauregard	36,549	29,529	4,649	402	1,052	917	27,489	22,304	3,495	269	773	648	22,071	18,639	2,264	1,168
Bienville	12,981	6,950	5,600	57	207	167	10,073	5,486	4,284	30	162	111	8,336	4,509	3,728	99
Bossier	128,746	81,052	32,551	3,492	3,273	8,378	95,876	62,931	22,440	2,448	2,477	5,580	65,726	48,229	13,555	3,942
*Caddo	115,441	81,078	24,210	3,063	2,680	4,410	90,776	65,789	17,575	2,243	2,062	3,107	69,121	52,696	12,684	3,741
*Calcasieu	85,486	70,025	9,096	1,138	1,772	3,455	63,273	52,977	5,911	796	1,257	2,332	45,978	40,556	3,671	1,751
Claiborne	14,170	7,263	6,360	88	185	274	11,507	6,258	4,824	55	140	230	8,390	4,557	3,677	156
*De Soto	11,787	8,939	2,074	35	377	362	8,971	6,910	1,554	25	266	216	8,699	6,940	1,476	283
Evangeline	32,350	21,354	9,235	241	280	1,240	24,408	16,460	6,483	187	217	1,061	20,388	14,274	5,744	370
Grant	22,169	17,709	3,335	133	644	348	17,527	13,964	2,717	97	507	242	12,226	10,764	1,120	342
Jackson	15,031	9,967	4,166	175	255	468	11,783	7,967	3,125	140	174	377	9,375	6,570	2,610	195
Lincoln	48,396	26,034	19,364	892	662	1,444	38,655	21,306	15,119	744	526	960	24,408	15,139	8,357	912
*Ouachita	55,373	45,898	5,641	1,121	1,225	1,488	41,613	34,950	3,864	771	961	1,067	36,532	32,374	2,853	1,305
*Rapides	24,719	19,507	2,233	699	829	1,451	18,855	15,256	1,530	494	627	948	15,222	13,127	1,240	855
Red River	7,620	4,195	3,106	25	171	123	5,714	3,338	2,164	3	116	93	5,475	3,034	2,358	83
Sabine	22,155	15,036	3,861	94	2,723	441	17,064	12,054	2,655	66	1,970	319	13,570	10,287	1,912	1,371
Union	21,107	14,460	5,224	62	338	1,023	16,632	11,807	3,861	39	254	671	14,802	10,847	3,497	458
Vernon	48,750	35,087	7,611	1,442	1,600	3,010	36,261	26,765	5,133	1,074	1,160	2,129	22,409	18,129	2,608	1,672
Webster	36,967	22,735	12,679	208	687	658	28,753	18,144	9,464	154	558	433	21,259	14,068	6,744	447
Winn	13,755	8,594	3,727	210	263	961	10,906	6,932	2,695	170	207	902	8,262	5,916	2,218	128
District 4	776,302	541,739	169,212	13,823	20,170	31,358	593,646	424,349	122,168	9,987	15,060	22,082	443,328	339,359	84,236	19,733
	100.000%	69.785%	21.797%	1.781%	2.598%	4.039%	100.000%	71.482%	20.579%	1.682%	2.537%	3.720%	74.679%	76.548%	19.001%	4.451%
District 5																
*Ascension	31,773	23,466	4,867	839	497	2,104	22,786	17,357	3,196	543	343	1,347	19,854	16,011	2,623	1,220
*Avoyelles	20,125	14,889	4,417	132	397	290	15,393	11,696	3,076	102	282	237	11,431	8,976	2,117	338
Caldwell	9,645	7,646	1,632	51	150	166	7,478	5,969	1,224	46	116	123	5,813	4,959	762	92
Catahoula	8,906	5,776	2,395	46	119	570	6,951	4,557	1,736	33	87	538	6,113	4,363	1,695	55
Concordia	18,687	10,275	7,725	122	233	332	14,217	8,108	5,613	100	167	229	11,419	6,816	4,418	185
*East Baton Rouge	172,199	119,876	31,907	8,088	2,420	9,908	138,993	99,727	23,872	6,216	1,935	7,243	104,631	81,782	15,706	7,143
East Carroll	7,459	2,054	5,272	29	43	61	5,901	1,773	4,043	19	27	39	4,564	1,218	3,305	41

Splits

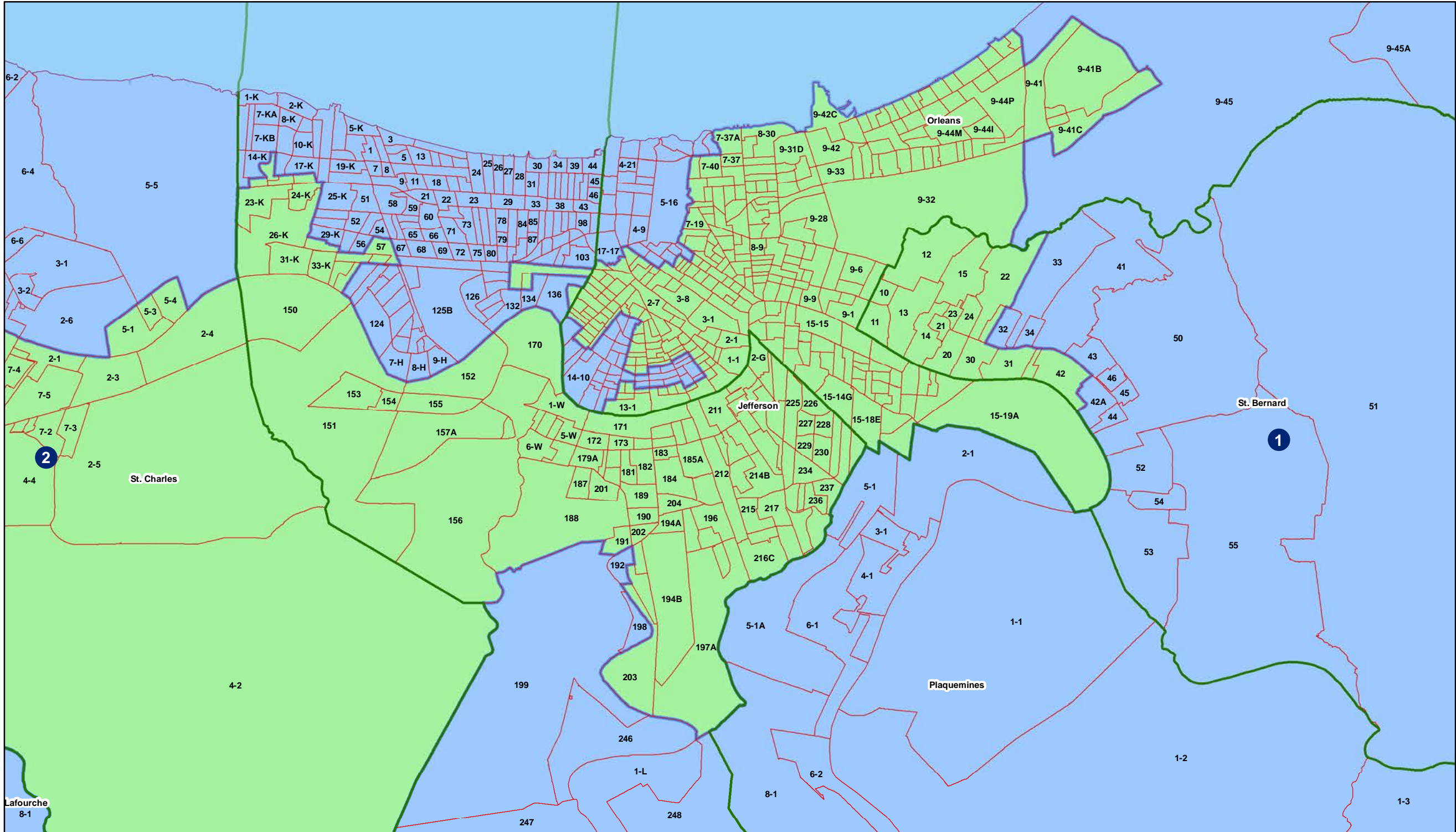
Plan: Senate Bill 8 Engrossed by Sen. Womack

	Total Population	Total White	Total Black	Total Asian	Total American Indian	Total Other	VAP Total	VAP White	VAP Black	VAP Asian	VAP American Indian	VAP Other	Reg Total Dec 2023	Reg White Dec 2023	Reg Black Dec 2023	Reg Other Dec 2023
District 5																
East Feliciana	19,539	11,516	7,341	91	262	329	16,183	9,740	5,918	61	198	266	13,327	7,805	5,075	447
Franklin	19,774	12,492	6,802	70	205	205	15,028	9,901	4,779	44	153	151	12,350	8,524	3,718	108
La Salle	14,791	11,348	1,422	283	372	1,366	11,563	8,636	1,065	264	271	1,327	8,380	7,633	583	164
*Livingston	128,972	105,579	11,520	1,613	2,852	7,408	94,772	79,483	7,332	1,053	2,104	4,800	73,766	65,923	4,974	2,869
Madison	10,017	3,475	6,363	20	59	100	7,435	2,906	4,391	9	48	81	7,068	2,439	4,518	111
Morehouse	25,629	12,281	12,484	160	370	334	20,062	10,095	9,300	117	279	271	15,440	7,806	7,377	257
*Ouachita	104,995	42,647	55,576	1,667	1,436	3,669	78,587	35,024	38,426	1,347	1,098	2,692	59,098	25,775	31,168	2,155
Richland	20,043	11,785	7,603	83	258	314	15,383	9,338	5,546	66	203	230	13,141	8,144	4,753	244
St. Helena	10,920	4,527	6,031	39	134	189	8,463	3,805	4,371	28	109	150	8,260	3,626	4,492	142
*Tangipahoa	78,140	41,836	30,854	783	1,237	3,430	59,521	33,957	21,686	612	935	2,331	34,249	22,443	10,704	1,102
Tensas	4,147	1,744	2,312	23	26	42	3,235	1,446	1,728	12	23	26	3,485	1,510	1,937	38
Washington	45,463	29,943	13,434	216	736	1,134	34,951	23,743	9,732	154	561	761	27,151	18,603	7,892	656
West Carroll	9,751	7,894	1,425	27	180	225	7,532	6,223	1,010	20	136	143	6,871	5,770	1,013	88
West Feliciana	15,310	10,883	3,740	89	225	373	12,783	9,283	2,951	56	174	319	7,492	5,186	2,160	146
District 5	776,285	491,932	225,122	14,471	12,211	32,549	597,217	392,767	160,995	10,902	9,249	23,304	453,903	315,312	120,990	17,601
	100.000%	63.370%	29.000%	1.864%	1.573%	4.193%	100.000%	65.766%	26.958%	1.825%	1.549%	3.902%	76.003%	69.467%	26.655%	3.878%
District 6																
*Avoyelles	19,568	10,736	7,261	302	370	899	15,185	8,573	5,235	277	288	812	10,007	6,266	3,505	236
*Caddo	122,407	22,379	95,094	971	1,160	2,803	91,631	19,270	68,784	765	896	1,916	62,821	11,685	48,787	2,349
*De Soto	15,025	6,345	7,899	82	363	336	11,469	4,999	5,871	61	291	247	9,188	4,065	4,841	282
*East Baton Rouge	284,582	76,193	181,491	8,337	2,307	16,254	216,619	64,154	132,918	6,383	1,812	11,352	164,206	50,963	103,796	9,447
*Lafayette	61,342	21,514	35,873	494	545	2,916	46,240	17,689	25,965	350	358	1,878	36,884	14,039	21,247	1,598
Natchitoches	37,515	19,361	15,725	255	861	1,313	29,349	16,010	11,415	198	683	1,043	20,675	11,761	8,016	898
Pointe Coupee	20,758	12,395	7,504	107	159	593	16,250	10,108	5,502	91	119	430	14,107	9,040	4,837	230
*Rapides	105,304	58,003	40,359	1,729	2,273	2,940	79,937	46,117	28,675	1,292	1,707	2,146	60,064	36,829	20,719	2,516
St. Landry	82,540	43,611	35,836	499	636	1,958	61,811	34,209	25,497	353	451	1,301	52,429	28,933	22,135	1,361
West Baton Rouge	27,199	14,307	11,170	287	326	1,109	20,526	11,146	8,149	209	219	803	16,753	9,620	6,764	369
District 6	776,240	284,844	438,212	13,063	9,000	31,121	589,017	232,275	318,011	9,979	6,824	21,928	447,134	183,201	244,647	19,286
	100.000%	36.695%	56.453%	1.683%	1.159%	4.009%	100.000%	39.434%	53.990%	1.694%	1.159%	3.723%	75.912%	40.972%	54.714%	4.313%

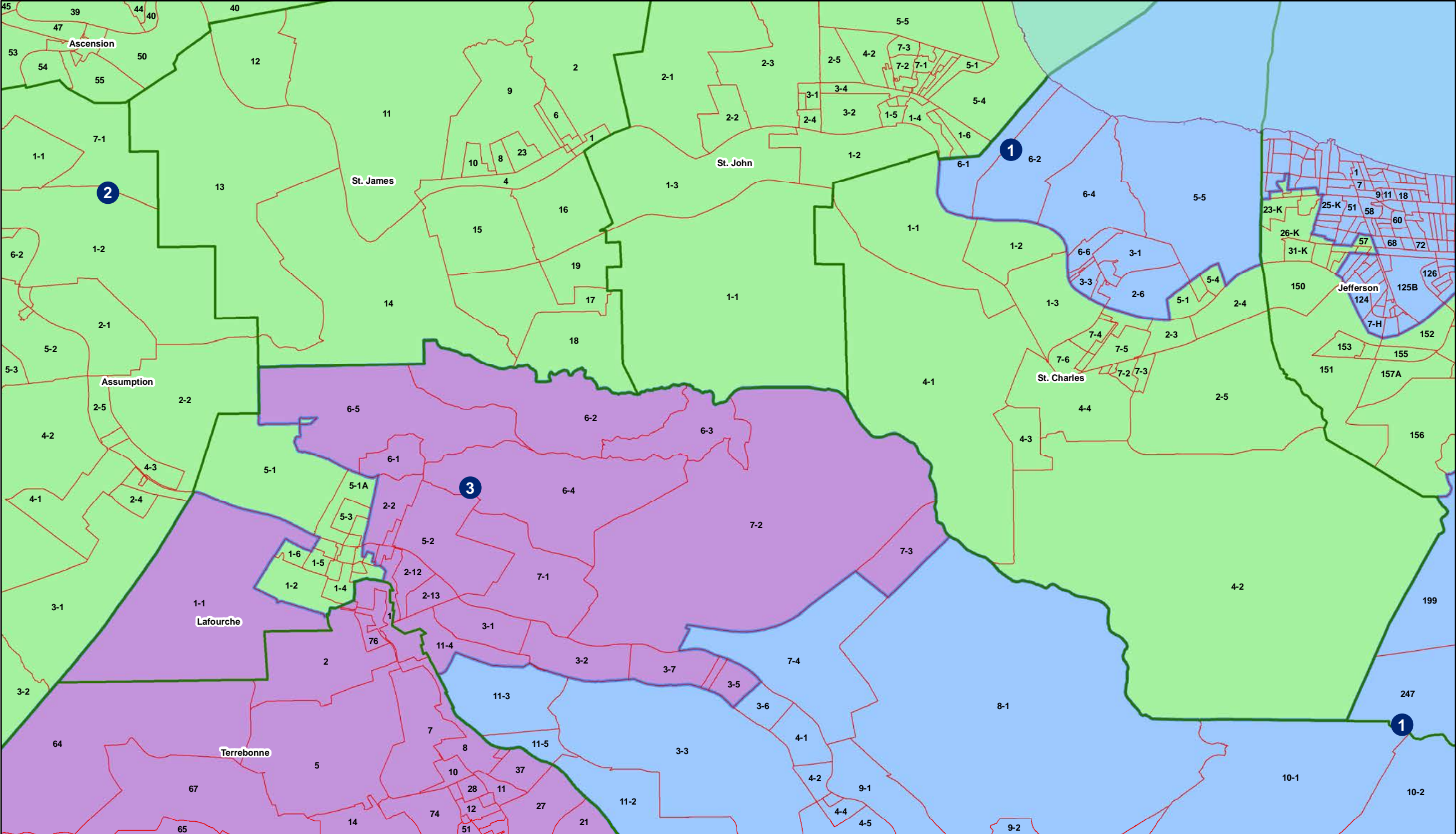
Congress - Statewide



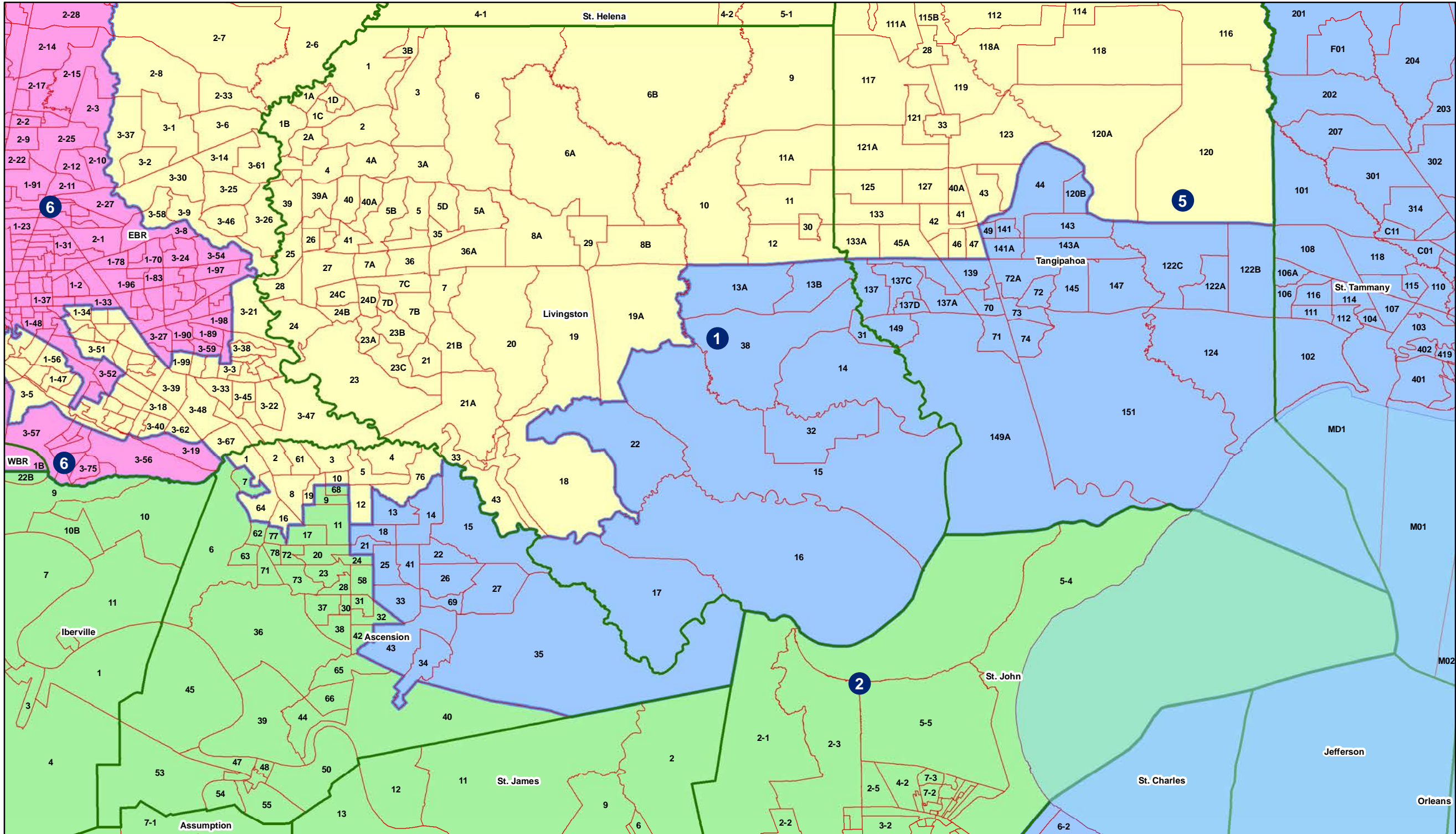
Congress - Jefferson / Orleans



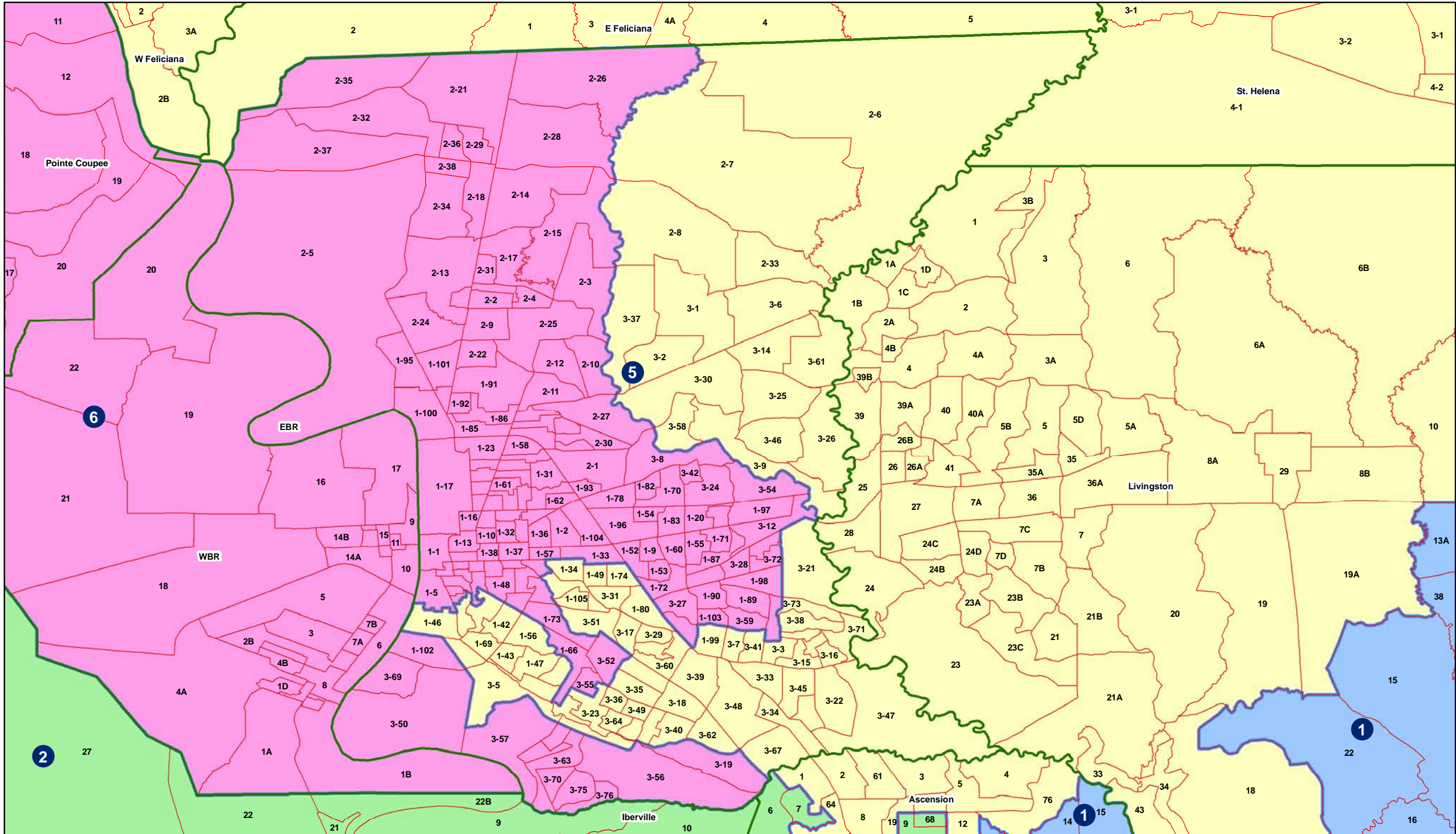
Congress -Lafourche / St. Charles



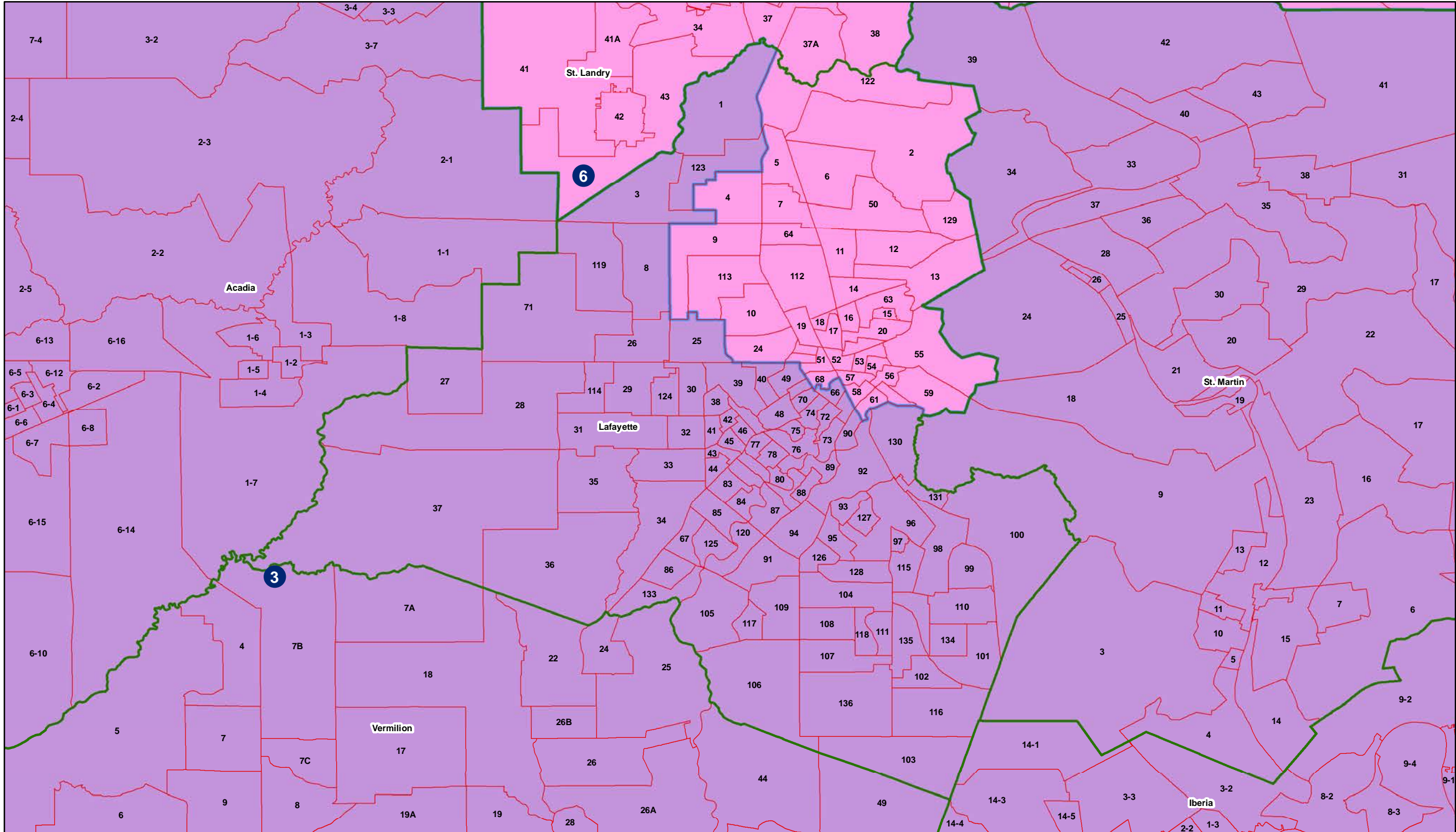
Congress -Ascension / Livingston / Tangipahoa (part)



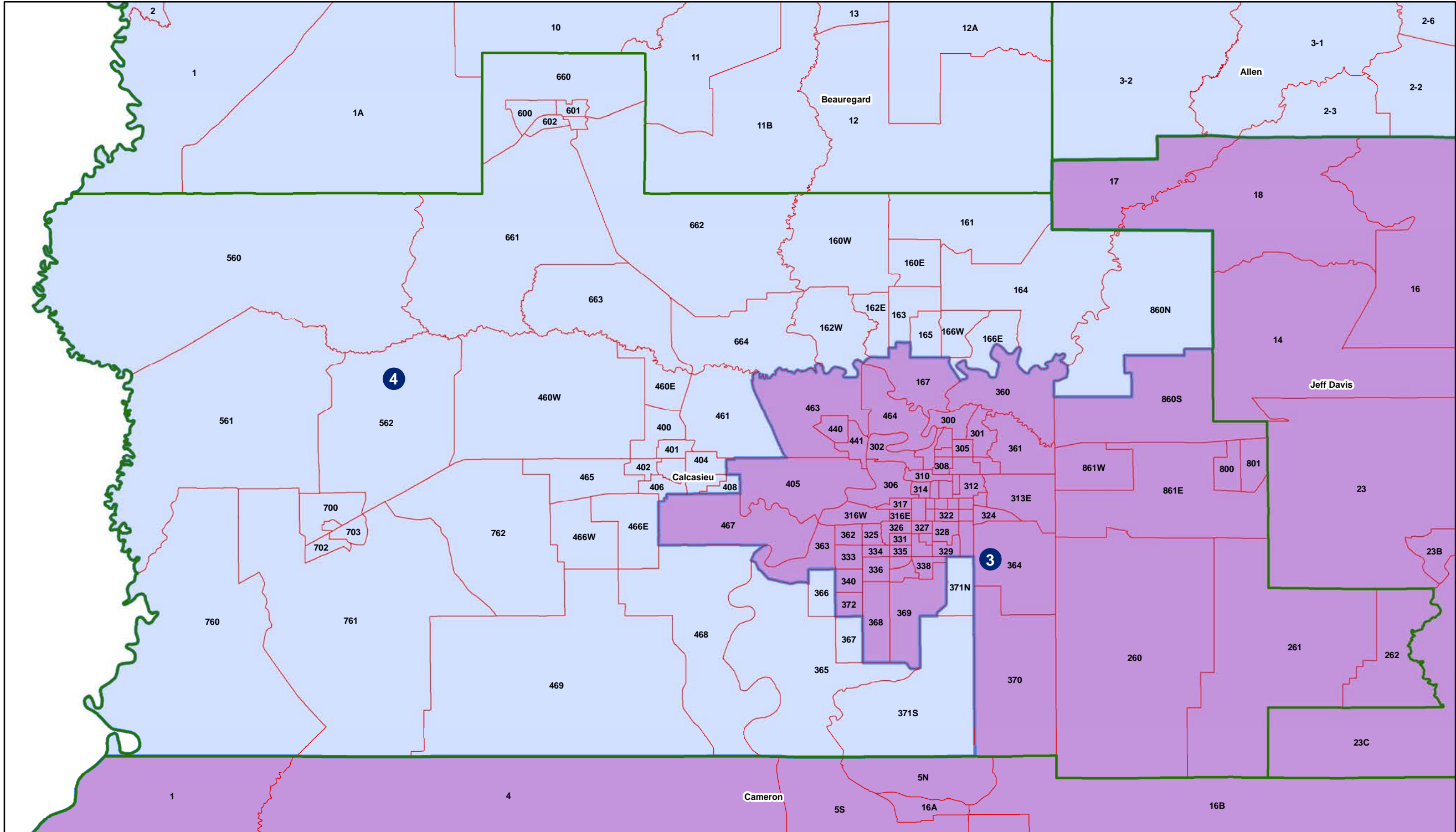
Congress - East Baton Rouge



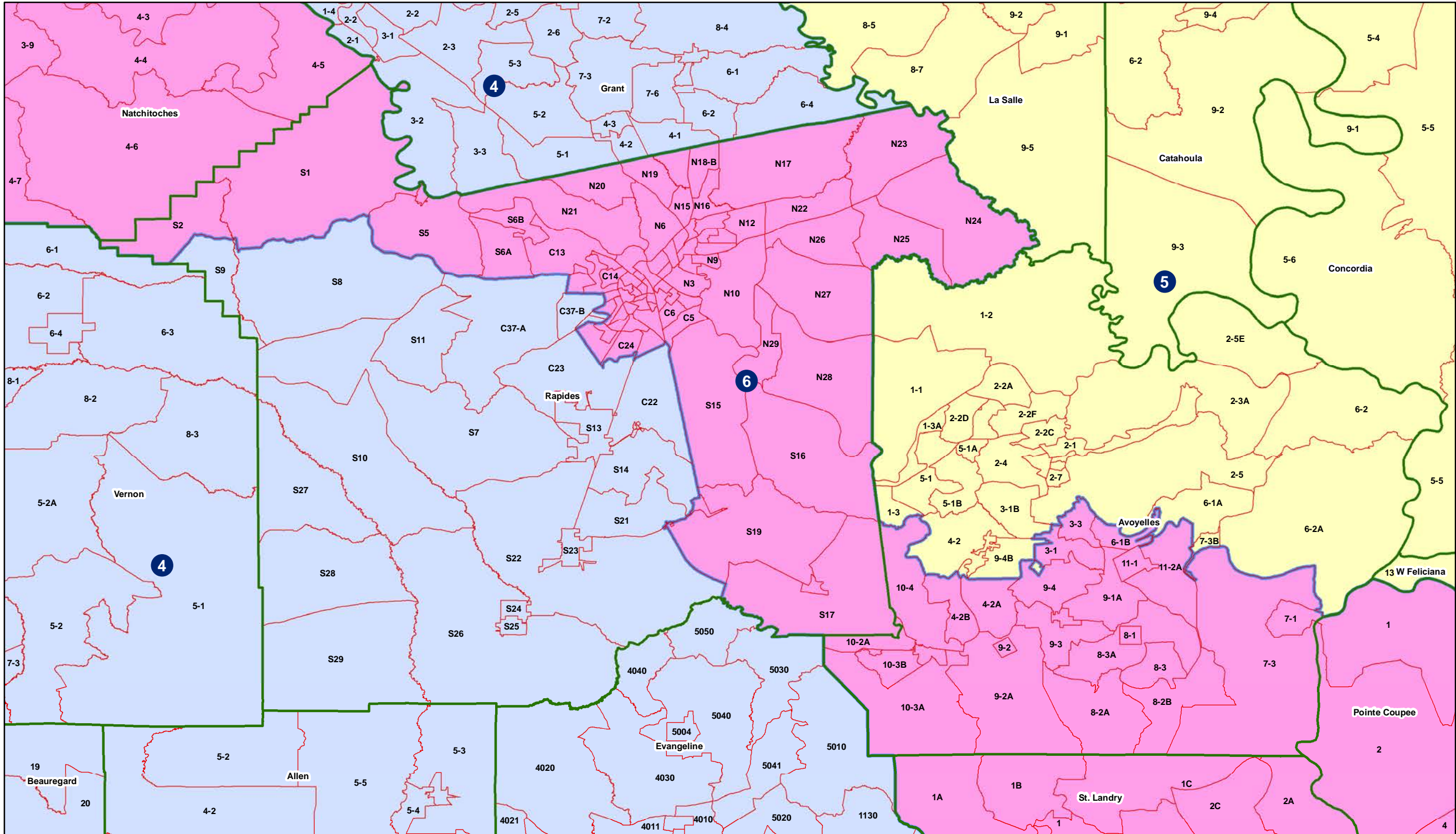
Congress - Lafayette



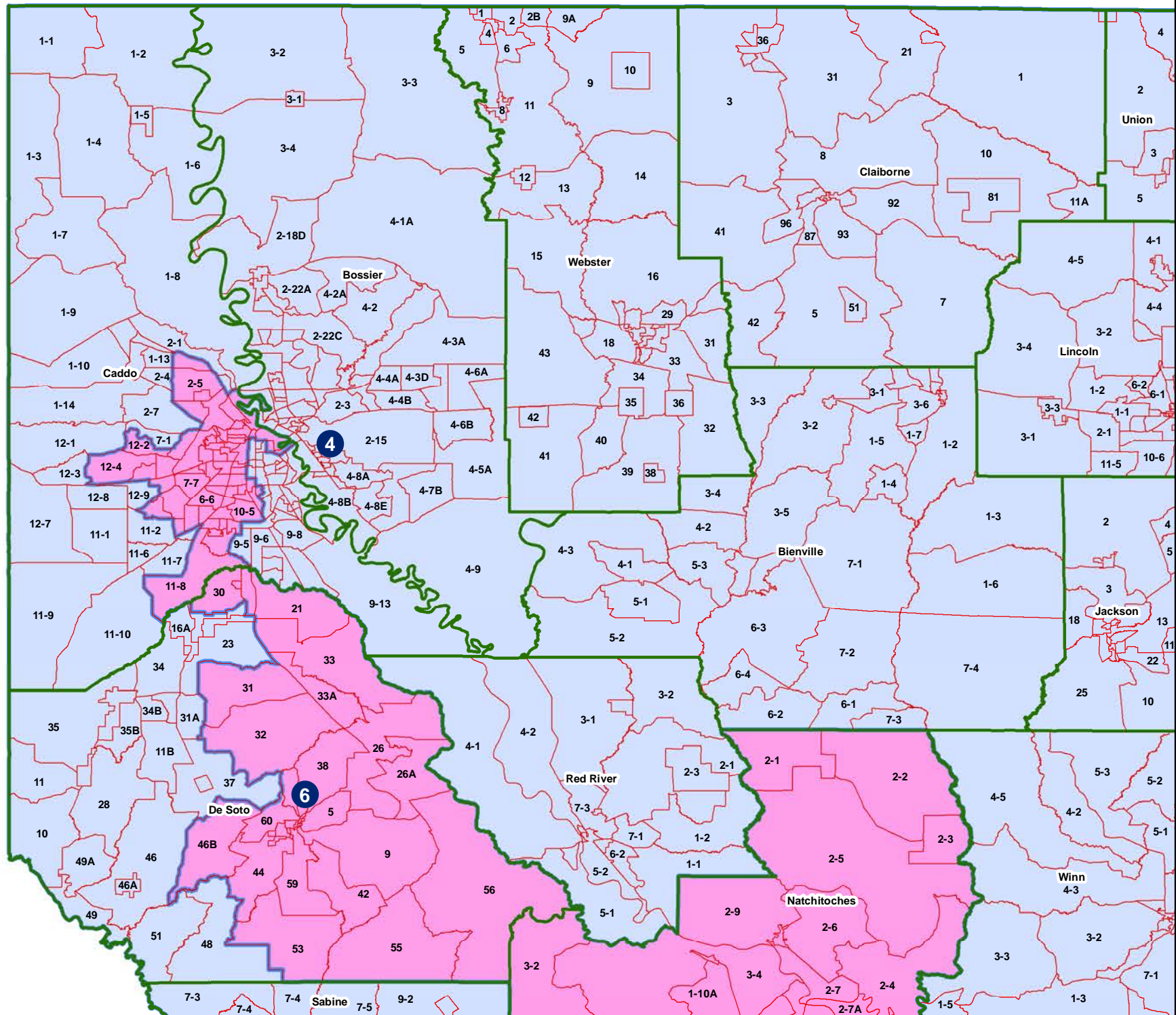
Congress - Calcasieu



Congress - Rapides / Avoyelles



Congress - Caddo / DeSoto



Congress - Ouachita

